

# PROJECT PLACE

RENTAL LISTINGS - FEBRUARY 2025



## IN THIS GUIDE:

- Affordable Housing Providers.....p. 3
- Affordable Rental Listings.....p. 5
- Senior & Veteran Rental Listings.....p. 22
- Housing Resources & Programs.....p. 44

## ABOUT THE HOUSING RIGHTS CENTER

The Housing Rights Center (HRC) is the nation's largest nonprofit civil rights organization dedicated to promoting and securing fair housing. HRC provides residents of **Los Angeles and Ventura Counties** with FREE:

- Housing Rights Counseling
- Discrimination Investigation & Enforcement
- Outreach and Public Education

## NEED HELP NOW?

Call HRC's Housing Rights Hotline to speak with a trained Housing Counselor about your landlord-tenant rights and responsibilities.

- Toll-free hotline: **1-800-477-5977**
- TTY: 1-213-201-0867
- Email: [info@housingrightscenter.org](mailto:info@housingrightscenter.org)

## PROJECT PLACE TOOLKIT

Free guide to use when applying for housing (housing search resources, basics of renting, and source of income discrimination).



Download your copy: [housingrightscenter.org/project-place-toolkit](https://housingrightscenter.org/project-place-toolkit)

## WALK-IN CLINICS

HRC also offers free landlord-tenant housing clinics in Alhambra, El Monte, Inglewood, Palmdale, and Ventura. Details: [housingrightscenter.org/clinics](https://housingrightscenter.org/clinics).

**WORKSHOPS** Register for FREE at [www.housingrightscenter.org/workshops](https://www.housingrightscenter.org/workshops).



Want to read Project Place online? Sign up at [www.housingrightscenter.org](https://www.housingrightscenter.org) to get the new issue in your email every month!

# Apartment and House Hunter's Checklist

Before you start looking for a place, get organized and decide: 1) how much you can afford to pay, 2) what your space and living needs are, 3) how long you plan on staying, and 4) what sort of area you want to live in.

When you find a potential unit be sure that the answers to these questions are covered in or added to your rental agreement. And don't leave without a copy of any amendments-it's worth a detour to the local copy center.

1. When is the unit available? If the move-in date is impractical for you, ask if it's negotiable so that you don't pay for unoccupied time. Is the apartment currently occupied? Is the lease agreement month-to-month or year-to-year?
2. How much are rent and deposit fees, and when is rent due? If mailed, does the rent need to be received or postmarked by the due date?
3. Is there a grace period after the monthly rental due date? When is your payment considered late, and is there a penalty charge for late payment?
4. What are the terms for renewing the lease? Can you move into an apartment you like better if one becomes vacant? What are the conditions if you have to move before the lease expires?
5. Are pets allowed?
6. Are any utilities included in your agreement?
7. Are you allowed to have roommates? What is the policy on subletting?
8. Can you paint the walls or make other decorating changes?
9. Will you be responsible for any property maintenance? Is there an office onsite, or a 24-hour phone number in case of an emergency?
10. Is the unit a legal dwelling?

## **Application Screening Fee**

A landlord can charge you an application screening fee to cover his/her out-of-pocket expenses for obtaining and processing your application. The application fee cannot be more than the landlord's actual out-of-pocket costs, and effective in 2024, can never be more than \$62.02. The landlord must give you an itemized receipt showing his/her expenses and must return any unused portion of the fee (for example, if the landlord did not check your references).

## **A Checklist of Things to Inspect**

Here is a checklist of things you should look for when inspecting a rental property. All requirements mentioned are contained in the California Civil Code. Please slow down and look carefully before you sign on the dotted line.

- |   |  |
|---|--|
| <input type="checkbox"/> Structure (floors, walls, ceiling, foundation) | <input type="checkbox"/> Signs of insects, vermin, and rodents |
| <input type="checkbox"/> Plumbing                                       | <input type="checkbox"/> Wiring and electricity                |
| <input type="checkbox"/> Bathroom                                       | <input type="checkbox"/> Fire safety                           |
| <input type="checkbox"/> Kitchen  | <input type="checkbox"/> Trash and garbage receptacles         |
| <input type="checkbox"/> Hot water                                      | <input type="checkbox"/> General cleanliness of the area       |
| <input type="checkbox"/> Heat   | <input type="checkbox"/> Locks                                 |
| <input type="checkbox"/> Light and ventilation                          | <input type="checkbox"/> Earthquake safety                     |

## **Get all Promises in Writing**

Whatever promises the landlord makes, you should be aware that it is very common for vague, oral agreements to lead to misunderstanding, bitterness, and financial loss. The time to protect yourself is now. Get all promises in writing. Make two copies, one for the landlord and one for your own file.

## **The Landlord-Tenant Checklist**

Another good self-protection device for both landlords and tenants involves taking an inventory of the condition of the premises at the time you move in, and then again when you move out. This means no more than making a brief written record of the condition of each room and having it signed by you and your landlord. Not only does the inventory give both an accurate record of the condition of the unit, but the act of making it provides a framework for communication and the resolution of potential disputes about security deposits when you move out. Contact the Housing Rights Center to receive a sample checklist. It is also a good idea to take pictures of your unit when you move in and move out.

If you have any questions about your rights and responsibilities as a tenant or landlord please contact the Housing Rights Center at (213) 387-8400 or (800) 477-5977 or e-mail us at [info@housingrightscenter.org](mailto:info@housingrightscenter.org).

# AFFORDABLE HOUSING PROVIDERS

This section lists companies and organizations that have multiple properties throughout Los Angeles County or Ventura County. Contact an organization for information on their properties and to apply.



**HOUSING RIGHTS CENTER**

WORKING FOR JUSTICE AND EQUALITY IN HOUSING

## Affordable Housing Developers

These are some organizations that build affordable housing in the Los Angeles and Ventura areas. Visit their websites or contact them to stay up to date on their new projects and open waitlists.

### Los Angeles County

#### **Abode Communities**

1149 S. Hill Street, Suite  
700 Los Angeles, CA 90015  
(213) 629-2702  
[www.abodecommunities.org](http://www.abodecommunities.org)

#### **Caring Housing Ministries**

3204 Rosemead Blvd., Suite 100  
El Monte, CA 91731  
(626) 300-2400  
[www.chm.org](http://www.chm.org)

#### **Community Corporation of Santa Monica**

1423 Second Street Suite B  
Santa Monica, CA 90401  
(310) 394-8487  
[www.communitycorp.org](http://www.communitycorp.org)

#### **A Community of Friends**

3701 Wilshire Blvd., Suite  
700 Los Angeles, CA 90010  
(213) 480-0809  
[www.acof.org](http://www.acof.org)

#### **East LA Community Corporation**

2917 E 1st Street, Suite 101  
Los Angeles, CA 90033  
(323) 269-4214  
[www.elacc.org](http://www.elacc.org)

#### **Hollywood Community Housing Corporation**

5020 Santa Monica Blvd.  
Los Angeles, CA 90029  
(323) 469-0710  
[www.hollywoodhousing.org](http://www.hollywoodhousing.org)

#### **Homes for Life Foundation -**

*Permanent supportive housing/or people  
with chronic mental disabilities*  
8939 S. Sepulveda Boulevard, Suite  
460 Los Angeles, CA 90045  
(310) 337-7417  
[www.homesforlife.org](http://www.homesforlife.org)

#### **LINC Housing Corporation**

555 E. Ocean Blvd., Suite 900  
Long Beach, CA 90802  
(562) 684-1100  
[www.linchousing.org](http://www.linchousing.org)

#### **Menorah Housing Foundation**

*Senior Housing*  
10991 W. Pico Blvd.  
Los Angeles, CA 90064  
(310) 477-1476  
[www.menorahhousing.org](http://www.menorahhousing.org)

#### **Mercy Housing - California**

1500 South Grand Ave. Suite 100  
Los Angeles, CA 90015  
(866) 338-0557  
[www.mercyhousing.org/california](http://www.mercyhousing.org/california)

#### **SRO Housing Corporation**

*Housing/or homeless and low-  
income individuals*  
1055 W. 7th St. Suite 3250  
Los Angeles, CA 90017  
(213) 229-9640  
[www.srohousing.org](http://www.srohousing.org)

#### **West Hollywood Community Housing Corporation**

7530 Santa Monica Boulevard, Ste. #1  
West Hollywood, CA 90046  
(323) 650-8771  
[www.whchc.org](http://www.whchc.org)

### Ventura County

#### **Cabrillo Economic Development Corporation**

702 County Square Drive  
Ventura, CA 93003  
(805) 659-3791  
[www.cabrilloedc.org](http://www.cabrilloedc.org)

#### **Many Mansions**

1425 E. Thousand Oaks Blvd.  
Thousand Oaks, CA 91362  
(805) 497-0344  
[www.manymansions.org](http://www.manymansions.org)



# AFFORDABLE RENTAL LISTINGS

This section lists contact information for properties with available affordable units. Contact a property directly for more information and to apply.



**HOUSING RIGHTS CENTER**

WORKING FOR JUSTICE AND EQUALITY IN HOUSING

# ACCEPTING LOTTERY APPLICATIONS

## January 15, 2025 - February 14, 2025



Tax Credit Community

Located in Los Angeles, CA



[www.tsahousing.com](http://www.tsahousing.com)



[arlington@tsaproperties.com](mailto:arlington@tsaproperties.com)



HOTLINE: (888) 292-2627

TTY: (800) 855-7100

## HOW TO APPLY

**Applications Available:** January 15, 2025

**Application Deadline:** February 14, 2025

Complete **ONLINE** at:  
<https://www.thearlingtonla.com/>

**Download** and **print** at:  
<https://www.thearlingtonla.com/>

Pick up **ON-SITE** at:  
3300 W Washington Blvd, Los Angeles, CA 90018

**Mail Completed Applications To:**  
The Arlington, c/o Thomas Safran & Associates  
P.O. Box 49898, Los Angeles, CA 90049

Mailed applications must be postmarked by February 14, 2025 to be included in the lottery.

# The Arlington

3300 W Washington Blvd, Los Angeles, CA 90018



## ABOUT THE PROPERTY

The Arlington is an 84-unit, tax credit community located in Los Angeles, California.

The community features on-site management and maintenance staff. The studio, two-, and three-bedroom units include vinyl flooring, a kitchen with a range and oven, a refrigerator, and waste disposal. The property will fill 41 units through the lottery/general waiting list. The remaining 42 units will be filled by referral through the Coordinated Entry System (CES). Resident activities are regularly scheduled and are determined based on the community's needs.

## PROPERTY AMENITIES

- Community Room with kitchen
- Fitness Center
- Computer Lab
- On-Site Laundry Facility
- Library
- Bike Room
- Courtyard

## RENT/ INCOME RESTRICTION

The Arlington is an 84-unit, tax credit community located in Los Angeles, California. To qualify, applicants must have a gross monthly income that is at least twice the monthly rent. Voucher holders do not need to meet the minimum gross monthly income requirement. **Subject to change**

Unit Size	Occupancy	Rent/Month	Min. Gross Monthly Income
Studio	Min. 1 / Max. 2	up to \$1,213	\$2,426
2 BD	Min. 2 / Max. 5	up to \$1,560	\$3,120
3 BD	Min. 4 / Max. 7	up to \$1,803	\$3,606

## INCOME LIMITS

Applicants must have incomes below the 50% AMI for Los Angeles County for their household size.

See the chart below. **Subject to change.**

1 Person	2 People	3 People	4 People	5 People	6 People	7 People
\$48,550	\$55,450	\$62,400	\$69,350	\$74,900	\$80,450	\$86,000

## PARKING

Parking is limited. Please inquire with management for more information.

Free interpretation services available. Please contact [arlington@saproperties.com](mailto:arlington@saproperties.com) to make this request. TTY: (800) 855-7100. Hay servicios de interpretacion gratuitos disponibles. Porfavor envie un correo electronico a [arlington@saproperties.com](mailto:arlington@saproperties.com) para obtener ayuda. TTY: (800) 855-7100

This housing is offered without regard to race, color, religion, sex, gender, gender identity and expression, familial status, national origin, citizenship status, immigrant status, primary language, marital status, ancestry, age, sexual orientation, disability, source of income (including receipt of Section 8 and other similar vouchers), genetic information, military or veteran status, arbitrary characteristics, or any other basis currently or subsequently prohibited by law.

This property has accessible and adaptable units for people with disabilities. People with disabilities may ask for, and receive reasonable accommodations, modifications, and auxiliary aids, including in the application process. Please contact [arlington@saproperties.com](mailto:arlington@saproperties.com) to make this request.

This property is a 100% non-smoking community





# ACEPTANDO SOLICITUDES DE LOTERÍA

15 de enero de 2025 - 14 de febrero de 2025



Comunidad de crédito fiscal

Ubicado en Los Angeles, CA



[www.tsahousing.com](http://www.tsahousing.com)



[arlington@tsaproperties.com](mailto:arlington@tsaproperties.com)



HOTLINE: (888) 292-2627

TTY: (800) 855-7100

## CÓMO APLICAR

**Solicitudes disponibles:** 15 de enero de 2025

**Fecha límite de solicitud:** 14 de febrero de 2025

**Completa ONLINE en:**

<https://www.thearlingtonla.com/>

**Descargar e imprimir en:**

<https://www.thearlingtonla.com/>

**Recogida EN EL SITIO en:**

3300 W Washington Blvd, Los Angeles, CA 90018

**Envíe las solicitudes completas a:**

The Arlington, c/o Thomas Safran & Associates  
P.O. Box 49898, Los Angeles, CA 90018

Las solicitudes enviadas por correo deben estar mataselladas antes del 15 de febrero de 2025 para ser incluidas en la lotería.



# The Arlington

3300 W Washington Blvd, Los Angeles, CA 90018



## SOBRE LA PROPIEDAD

The Arlington es una comunidad de crédito fiscal de 84 unidades ubicada en Los Ángeles, California.

El complejo cuenta con personal de administración y mantenimiento en el lugar. Las unidades tipo estudio, de dos y tres habitaciones incluyen pisos de vinilo, una cocina con estufa y horno, un refrigerador y un triturador de basura. La propiedad llenará 41 unidades a través de la lotería/lista de espera general. Las 42 unidades restantes se llenarán por remisión a través del Sistema de Entrada Coordinada (CES). Las actividades de los residentes se programan periódicamente y se determinan en función de las necesidades de la comunidad.

## COMODIDADES

- Salón comunitario con cocina
- Gimnasio
- Laboratorio de computación
- Lavandería en el lugar
- Biblioteca
- Sala de bicicletas
- Patio

## ALQUILER/RESTRICCIÓN DE INGRESOS

The Arlington es una comunidad de crédito fiscal de 84 unidades ubicada en Los Ángeles, California. Para calificar, los solicitantes deben tener un ingreso bruto mensual de al menos el doble del alquiler mensual. Los titulares de cupones no necesitan cumplir con el requisito de ingreso mensual bruto mínimo. Sujeto a cambios

Tamaño	Mín./Máx. de personas	Renta/Mes	mín. Ingreso Mensual Bruto
0 hab.	Min. 1 / Max. 2	hasta \$1,213	\$2,426
2 hab.	Min. 2 / Max. 5	hasta \$1,560	\$3,120
3 hab.	Min. 4 / Max. 7	hasta \$1,803	\$3,606

## LÍMITES DE INGRESOS

Los solicitantes deben tener ingresos inferiores al 50% del AMI del condado de Los Ángeles para el tamaño de su hogar. Vea el gráfico a continuación. Sujeto a cambios.

1 Persona	2 Personas	3 Personas	4 Personas	5 Personas	6 Personas	7 Personas
\$48,550	\$55,450	\$62,400	\$69,350	\$74,900	\$80,450	\$86,000

## ESTACIONAMIENTO

El estacionamiento es limitado. Consulta con la administración para obtener más información.

Free interpretation services available. Please contact [arlington@saproperties.com](mailto:arlington@saproperties.com) to make this request. TTY: (800) 855-7100. Hay servicios de interpretación gratuitos disponibles. Por favor envíe un correo electrónico a [arlington@saproperties.com](mailto:arlington@saproperties.com) para obtener ayuda. TTY: (800) 855-7100

Esta vivienda se ofrece sin distinción de raza, color, religión, sexo, género, identidad y expresión de género, estado familiar, origen nacional, estado de ciudadanía, estado de inmigrante, idioma principal, estado civil, ascendencia, edad, orientación sexual, discapacidad, fuente de ingresos (incluido el recibo de la Sección 8 y otros comprobantes similares), información genética, estado militar o de veterano, características arbitrarias o cualquier otra base actualmente o posteriormente prohibida por la ley.

Esta propiedad cuenta con unidades accesibles y adaptables para personas con discapacidad. Las personas con discapacidades pueden solicitar y recibir adaptaciones, modificaciones y ayudas auxiliares razonables, incluso en el proceso de solicitud. Comuníquese con [arlington@saproperties.com](mailto:arlington@saproperties.com) para realizar esta solicitud.

Esta propiedad es una comunidad 100% para no fumadores.





# ACCEPTING APPLICATIONS

## Beginning December 17, 2024

- Section 8/Tax Credit Community
- 2-, 3-, and 4-bedroom units
- Close to restaurants, shopping, and movie theaters



[www.tsahousing.com](http://www.tsahousing.com)



[ranchoca@tsaproperties.com](mailto:ranchoca@tsaproperties.com)



Office: (951) 676-5066  
TTY: (800) 855-7100

## HOW TO APPLY

**Applications Available Beginning:**  
December 17, 2024

**Download and print at:**  
<https://www.tsahousing.com/property/ranchocalifornia>

Pick up **ON-SITE** at:  
29210 Stonewood Rd., Temecula, CA 92591

**Mail Completed Applications To:**  
Rancho California, Attn: Manager's Office  
29210 Stonewood Rd., Temecula, CA 92591

Rancho California is a 55-unit, Section 8/Tax Credit building located in Temecula, CA. The property offers 2-, 3-, and 4-bedroom units. All applications submitted will be added to the existing waiting list in chronological order, by date and time received.



# Rancho California

29210 Stonewood Rd., Temecula, CA 92591



## ABOUT THE PROPERTY

Rancho California is a 55-unit, Section 8/Tax Credit community located in Temecula, CA. Rancho California is centrally located in Temecula, close to restaurants, shopping and movie theaters.

The community features 2, 3 and 4 bedroom townhouse-style units. Resident services include monthly parties, movie matinees, morning socials, exercise classes and more.

## PROPERTY AMENITIES

- Spacious Community Room
- On-Site Laundry Facility
- Fitness Room
- Lush landscaping
- Pool Table
- Piano
- BBQ Area

## RENT

Rancho California is a 55-unit, Section 8/Tax Credit community located in Temecula, CA. There is no minimum income required and households will pay approximately 30% of their adjusted monthly income in rent as determined. **Subject to change**

Unit Size	Occupancy
2 BD	Min. 2 / Max. 5
3 BD	Min. 3 / Max. 7
4 BD	Min. 4 / Max. 9

## INCOME LIMITS

Applicants must have incomes below the 50% AMI for Riverside County. See the chart below.

2 People	3 People	4 People	5 People	6 People	7 People	8 People	9 People
\$41,000	\$46,100	\$51,250	\$55,350	\$59,450	\$63,550	\$67,650	\$71,750

To qualify, applicants must be below the income limits for the household size. **Subject to change.**

## PARKING

Parking is limited. Please inquire with management for more information.

Free interpretation services available. Please contact (951) 676-5066 or [ranchoca@tsaproperties.com](mailto:ranchoca@tsaproperties.com) to make this request. TTY: (800) 855-7100. Hay servicios de interpretacion gratuitos disponibles. Porfavor llame a (951) 676-5066 o envie un correo electronico a [ranchoca@tsaproperties.com](mailto:ranchoca@tsaproperties.com) para obtener ayuda. TTY: (800) 855-7100

This housing is offered without regard to race, color, religion, sex, gender, gender identity and expression, familial status, national origin, citizenship status, immigrant status, primary language, marital status, ancestry, age, sexual orientation, disability, source of income (including receipt of Section 8 and other similar vouchers), genetic information, military or veteran status, arbitrary characteristics, or any other basis currently or subsequently prohibited by law.

This property has accessible and adaptable units for people with disabilities. People with disabilities may ask for, and receive reasonable accommodations, modifications, and auxiliary aids, including in the application process. Please contact [ranchoca@tsaproperties.com](mailto:ranchoca@tsaproperties.com) to make this request.

This property is a 100% non-smoking community





# ACEPTANDO SOLICITUDES

## A partir del 17 de diciembre de 2024

- Comunidad de Sección 8/ Crédito Fiscal
- Unidades de 2, 3 y 4 dormitorios
- Cerca de restaurantes, tiendas y cines.



[www.tsahousing.com](http://www.tsahousing.com)



[ranchoca@tsaproperties.com](mailto:ranchoca@tsaproperties.com)



Oficina: (951) 676-5066  
TTY: (800) 855-7100

## CÓMO APLICAR

A partir del 17 de diciembre de 2024

**Descargar e imprimir en:**  
<https://www.tsahousing.com/property/ranchocalifornia>

Recoja una solicitud **EN EL SITIO** en:  
29210 Stonewood Rd., Temecula, CA 92591

**Envíe las solicitudes completas a:**  
Rancho California, Attn: Manager's Office  
29210 Stonewood Rd., Temecula, CA 92591

Rancho California es un edificio de 55 unidades, Sección 8/Crédito Fiscal ubicado en Temecula, CA. La propiedad ofrece unidades de 2, 3 y 4 dormitorios. Todas las solicitudes enviadas se agregarán a la lista de espera existente en orden cronológico, por fecha y hora de recepción.



# Rancho California

29210 Stonewood Rd., Temecula, CA 92591



## SOBRE LA PROPIEDAD

Rancho California es una comunidad de crédito fiscal/Sección 8 de 55 unidades ubicada en Temecula, CA. Rancho California tiene una ubicación central en Temecula, cerca de restaurantes, tiendas y cines.

El complejo cuenta con unidades estilo casa adosada de 2, 3 y 4 habitaciones. Los servicios para residentes incluyen fiestas mensuales, matines de cine, eventos sociales matutinos, clases de ejercicios y más.

## AMENIDADES DE LA PROPIEDAD

- Amplia sala comunitaria
- Lavandería
- Gimnasio
- Exuberante paisaje
- Mesa de billar
- Piano
- Área de barbacoa

## ALQUILER

Rancho California es una comunidad de crédito fiscal/Sección 8 de 55 unidades ubicada en Temecula, CA. No se requiere un ingreso mínimo y los hogares pagarán aproximadamente el 30 % de su ingreso mensual ajustado en alquiler según se determine. **Sujeto a cambios**

Tamaño	# de personas
2 HAB	Min. 2 / Max. 5
3 HAB	Min. 3 / Max. 7
4 HAB	Min. 4 / Max. 9

## LÍMITES DE INGRESOS

Los solicitantes deben tener ingresos por debajo del 50 % del AMI para el condado de Riverside. Vea el gráfico a continuación.

2 personas	3 personas	4 personas	5 personas	6 personas	7 personas	8 personas	9 personas
\$41,000	\$46,100	\$51,250	\$55,350	\$59,450	\$63,550	\$67,650	\$71,750

Para calificar, los solicitantes deben estar por debajo de los límites de ingresos para el tamaño del hogar. **Sujeto a cambios.**

## ESTACIONAMIENTO

El estacionamiento es limitado. Consulta con la administración para obtener más información.

Free interpretation services available. Please contact (951) 676-5066 or ranchoca@tsaproperties.com to make this request. TTY: (800) 855-7100. Hay servicios de interpretación gratuitos disponibles. Por favor llame a (951) 676-5066 o envíe un correo electrónico a ranchoca@tsaproperties.com para obtener ayuda. TTY: (800) 855-7100

Esta vivienda se ofrece sin distinción de raza, color, religión, sexo, género, identidad y expresión de género, estado familiar, origen nacional, estado de ciudadanía, estado de inmigrante, idioma principal, estado civil, ascendencia, edad, orientación sexual, discapacidad, fuente de ingresos (incluido el recibo de la Sección 8 y otros comprobantes similares), información genética, estado militar o de veterano, características arbitrarias o cualquier otra base actualmente o posteriormente prohibida por la ley.

Esta propiedad cuenta con unidades accesibles y adaptables para personas con discapacidad. Las personas con discapacidades pueden solicitar y recibir adaptaciones, modificaciones y ayudas auxiliares razonables, incluso en el proceso de solicitud. Comuníquese con ranchoca@tsaproperties.com para realizar esta solicitud.

Esta propiedad es una comunidad 100% para no fumadores.



## OPEN WAITING LISTS FOR ACCESSIBLE UNITS

If you are interested in applying for an available unit (mobility/hearing/vision) listed below, please visit [accesshousingla.org](http://accesshousingla.org) to submit your application.

### LOS ANGELES, CA

Contact: Debora Parra at [debora@ccscla.org](mailto:debora@ccscla.org) or 323-846-2500 Ext: 1173

View Listing: Roberta Stephens Villa 2 - 1113 E 27<sup>th</sup> St, Los Angeles, CA 90011

- Unit 2-103 (2bd/1bath Mobility): Rent \$1,551; AMI 60%; Occupancy: 2-4. Income: \$57,000 - \$71,460
- Unit 2-106 (3bd/1.5bath Mobility): Rent \$1,015 AMI 35%. Occupancy 3-6. Income: \$37,300 - \$48,370

View Listing: Roberta Stephens Villa 1 - 1035 E 27<sup>th</sup> St, Los Angeles, CA 90011

- Unit 1-108 (2bd/1bath Hearing/Vision): Rent \$1,551; AMI 60%; Occupancy 2-4; Income: \$57,000 - \$71,460

### LOS ANGELES COUNTY, CA

Thomas Saffran & Associates

Contact: (424) 551-2424; TTY: (800) 855-7100 or [tsahousing.com](http://tsahousing.com)

### GARDENA, CA

Contact: Angel Hipolito Delgado at [maya@lawtownhomes.org](mailto:maya@lawtownhomes.org) or (323) 777-7825

View Listing: Maya Town Homes – 12005 S. Broadway, Gardena, CA 90061

- Unit 101 (4bd/2 bath Hearing/Vision): Rent \$2,194; Minimum Income: 2x/rent

### WILMINGTON, CA

100% CES; Contact CES; SPA 8; referral required

View Listing: 841 N Banning Blvd, Wilmington, CA 90744

- Unit 2-103 (2bd/1bath Mobility): Rent \$1,551; AMI 60%; Occupancy: 2-4. Income: \$57,000 - \$71,460
- Unit 2-106 (3bd/1.5bath Mobility): Rent \$1,015 AMI 35%. Occupancy 3-6. Income: \$37,300 - \$48,370

# Thomas Safran & Associates

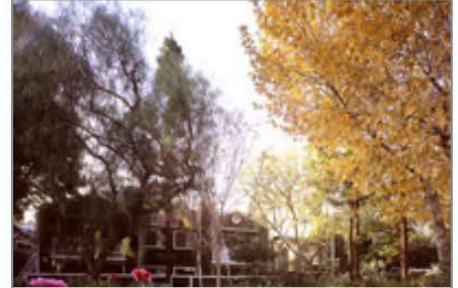
(310) 820-4888



**Bird Park**  
234 Bird Park Road  
Avalon, CA  
(310) 510-2471



**Drake Manor**  
200 West Drake Street  
Pomona, CA  
(909) 593-9615



**Strathern Park**  
11111 Strathern Street  
Sun Valley, CA  
(818) 768-4424



**Sunnyside Villas**  
5271 E. Kings Canyon Road  
Fresno, CA  
(559) 251-2531



**Veterans Village of  
Glendale**  
331 Salem Street  
Glendale, CA  
(818) 956-7970



**Villa Ramona**  
13030 Ramona Blvd.  
Baldwin Park, CA  
(626) 814-3455



**Strathern Park East**  
11047 Strathern Street  
Sun Valley, CA  
(818) 768-4424

## OPEN WAITING LISTS FOR ALL AGES

### **Bird Park**

234 Bird Park Road  
Avalon, CA  
(310) 510-2471

### **Drake Manor**

200 West Drake Street  
Pomona, CA  
(909) 593-9615

### **Strathern Park**

11111 Strathern Street  
Sun Valley, CA  
(818) 768-4424

### **Strathern Park East**

11047 Strathern Street  
Sun Valley, CA  
(818) 768-4424

### **Sunnyside Villas**

5271 E. Kings Canyon Road  
Fresno, CA  
(559) 251-2531

### **Veterans Village of Glendale**

331 Salem Street  
Glendale, CA  
(818) 956-7970

## OPEN WAITING LISTS FOR FAMILIES

(families requiring 2 or more bedrooms)

### **Caroline Severance Manor**

2927 W. Francis Street  
Los Angeles, CA, 90005  
213-375-3906

[VIEW](#)

### **Tolton/Montclair Court**

4200 Montclair Street  
Los Angeles, CA, 90018  
(323) 734-1869

[VIEW](#)

### **The Vineyard Townhomes**

385 S. Vine Street  
Ste 142 Anaheim, CA, 92805  
(714) 817-7994

[VIEW](#)

### **San Felipe**

730 N Herbert Ave  
#101, Los Angeles, CA, 90063  
(323) 780-2711

[VIEW](#)

### **Jefferson Park Terrace**

3023 South Western Avenue  
Los Angeles, CA, 90018  
(323) 419-0714

[VIEW](#)

### **Grand and Venice**

1500 South Grand Avenue  
Los Angeles, CA, 90015  
(213) 741-9374

[VIEW](#)



<u>Property Name</u>	<u>Waitlist</u>	<u>Population</u>	<u>Address</u>	<u>City</u>	<u>Zip Code</u>	<u>La...er Area</u>	<u># of Units</u>	<u>Unit Size</u>	<u>Contact and A1mlication Information</u>
Orange Grove Apartments						San Fernando Valley			
Plaza on Main			333 W Main St	Alhambra	910801	San Gabriel Valley		1Br	(626) 289-5800
Azusa Apartments			805 S. Cerritos Ave.	Azusa	91702	San Gabriel Valley			(323) 930-2300
Fourth Street Apartment Homes			1562W.4thSt.	Baldwin Park	91706	San Gabriel Valley		1Br, 2Br, 3Br, 4Br	Juan Rubio, Acqua Properties (818) 439-6665
SHARE! - DJ's Path House	Open		Cross Streets: Clark Ave. & Rosecrans Ave.	Bellflower					1-877-742-7349
Walnut Street Apartments			9823 Walnut St.	Bellflower	90706		30		562-204-5466; Available units posted at www.apartments.com
Arbor Green			21227 S Figueroa St	Carson	90745				(714) 282-2520
Carson Arts Colony	Open		21205MainStrcct	Carson	90745		46	1 Br, 2Br, 3Br	Escmeralda (424) 318-1770 www.carsonartsapartments.com; Application available through email or onsite.
Via425 Apartments			401 E Carson St	Carson	90745				Ashley(424) 477-5047; www.via425.com
Courier Place			111 S College Ave	Claremont	91711	San Gabriel Valley		1Br for Seniors (62+); 2Br and 3Br for all ages	(909) 624-8589
SHARE! - Mary's Blessings	Open		Cross Streets Rosecrans & Long Beach Blvd.	Compton					1-877-742-7349
HFLPalms Court	CES referral only	Chronically Wlhouseedor chronically with mental illness	3819-3821 Motor Ave	Culver City	9032	West Los Angeles	21	1Br	David Cuezon hflpalmscourt@sbcglobal.net (866) 5069746 or (310)2026937
Homeward Bound		Persons with developmental disabilities or low income	6000 Canterbury Dr	Culver City	90230	West Los Angeles		1Br	(310) 988-4000
Tilden Terrace			11042-11058 Washington Blvd, Culver City, CA	Culver City	90232	West Los Angeles	33	Multi-Family: 1br, 2br,3br	T: 213.627.9611, (310) 836-1300; E: lainfo@lifund.org
La Quinta			38301 11thSt	East Palmdale	93550	Antelope Valley		1Br,2Br	Call managerat(661) 265-9911 to make apointment
Longhorn Pavilion			36523 25th St	East Palmdale	93550	Antelope Valley		2Br,3Br	(661) 266-2997
Palmdale Desert Club Aots			37902 N 20th St	East Palmdale	93550	Antelope Valley		2Br,3Br	(818) 789-5550; (661) 273-7731
Baldwin Rose Veterans Apcrtments		Veterans	9953 Rose Ave	El Monte	91731	San Gabriel Valley		1Br	(909) 448-2688
Blessed Rock ofEl Monte			3348 Tyler Ave	El Monte		San Gabriel Valley		1Br	(626) 448-8589; (626) 448-2688
Cherrylee Gardens			11620 Cherrylee Dr	El Monte	91732	San Gabriel Valley		1Br	626) 443-4646; (866) 933-2293 ext 20590
El Monte Veterans Village		Unhoused, Veterans	11240 Ramona Blvd	El Monte	91731	San Gabriel Valley		1Br	(866) 624-8589
El Monte Veterans Village		Unhoused, Veterans	11240 Ramona Blvd.	El Monte	91731			1Br	(626) 377-9901
El Monte Veterans Village			11338 McGirk St.	El Monte				Multifamily	(626) 448-7882
El Monte Veterans Village			11154 BonwoodRd	El Monte				Multifamily	(626) 448-7882
El Monte Veterans Village			11332 & 11332 1/2 Coffield Ave	El Monte				Multifamily	(626) 448-7882
El Monte Veterans Village			3850 Penn Mar Street	El Monte				Multifamily	(626) 448-7882
El Monte Veterans Village			4400, 4402, 4406 Maxson Rd.	El Monte				Multifamily	(626) 448-7882
El Monte Veterans Village			11338 McGirk St	El Monte		San Gabriel Valley			(626) 448-7882
El Monte Veterans Village			1154 Bonwood Rd	El Monte		San Gabriel Valley			(626) 448-7882
El Monte Veterans Village			11332 & 11332 1/2 Cotfield Ave	El Monte		San Gabriel Valley			(626) 448-7882
El Monte Veterans Village			3850 Penn Mar St	El Monte		San Gabriel Valley			(626) 448-7882
El Monte Veterans Village			4400, 4402, 4406 Maxson Rd	El Monte		San Gabriel Valley			(626) 448-7882
El Monte Veterans Village			10562 Santa Fe Dr	El Monte		San Gabriel Valley			(626) 478-0760
El Monte Veterans Village			5004 Farago Ave.	El Monte- Temple City	91780			1Br	(626) 350-6139
El Monte Veterans Village			5004 Farago Ave	El Monte- Temple City	91780	San Gabriel Valley			(626) 377-9901
SHARE! - House ofJackie Orange Grove Apartments	Open		Cross Streets Normandie Ave. & W Redondo Beach Blvd. 6941 Owensmouth Avenue	Glendale	91303	San Fernando Valley		1 Br, 2Br, 3Br	1-877-742-7349 (818) 704-5983
SHARE! - Cerise House	Open		Cross Streets: 135th St. & Cerise Ave.	Hawthorne					1-877-742-7349
PATH Villas Eucalyptus			240WLimcSt	Inglewood	90301				714-221-5611
Arbor Fields Apartments			530 W Jackman St	Lancaster	93534			1 Br, 2Br, 3Br	(661) 942-0026
Arbor Fields Apartments			530 W Jackman St	Lancaster	93534	Antelope Valley		1Br, 2Br, 3Br	(661) 942-0026
Cedar Ridge Apartments	Open		2105 EastAvenue]-8	Lancaster	93534	Antelope Valley		3Br	(661)-723-7538
Imagine Village		Vcrrans	43517 SahuayoSt	Lancaster	93535	Los Angeles	64	Studio, 1 Br, 2Br, 3Br	https://housinglacounty.gov/pdfs/ImagineVillagePSHFlycr.pdf
Imagine Village			43517 Sahuayo St	Lancaster	93935	Antelope Valley		1Br	(661) 361-1819
Law-cl Crest Apartments			531 W Jackman St	Lancaster	93534	Los Angeles		1 Br, 2Br, 3Br	C11 (661) 948-3422 to make an appointment.
Law-cl Crest Apartments	Open Closed through 2021		531 W Jackman St	Lancaster	93534	Antelope Valley		1Br, 2Br, 3Br	(661) 948-3422 or (661) 9480905 (FAX)
Sierra Villa East			621 E. Avenue I	Lancaster	93535	Los Angeles		1Br	(661) 942-0663
Sierra Villa East			621 E. Avenue I	Lancaster	93535	Antelope Valley			(661) 942-0663
Village at Beechwood Apartments	Open		44063 Beech Ave.	Lancaster	93534	Antelope Valley		1Br, 2Br, 3Br	Christina (661) 948-7212; Application available onsite
SHARE! - Back to Basics	Open		Cross Streets Pacific Ave. & W52ndSt.	long Beach					1-877-742-7349
SHARE!-Court	Open		Cross Streets: E Anaheim St. & Gaviota Ave.	long Beach					1-877-742-7349
SHARE! - Inner Image 1704	Open		Cross Street: E Anaheim St. & Gaviota Ave.	long Beach					1-877-742-7349
SHARE! - Inner Image 1720	Open		Cross Streets PCH & Cherry	long Beach					1-877-742-7349
SHARE! - Joyful Solutions	Open		Cross Streets: J St. & N Criscal Court	long Beach					1-877-742-7349
SHARE! - New Magnolia House	Open		Cross Streets: Orange Ave. & E Artesia Blvd.	long Beach					1-877-742-7349
SHARE! - TUI Daisy	Open		Cross Street: E Anaheim St. & Gaviota Ave.	long Beach					1-877-742-7349
SHARE! - TUI Walnut	Open		Cross Streets: E Anaheim St. &GaviotaAvc.	long Beach					1-877-742-7349
SHARE! - Transforming Lives Norman	Open		Cross Streets: Anaheim St. & Alamitos Ave.	long Beach					1-877-742-7349
The Spark at Midtown			1900 long Beach Blvd	long Beach	90806				
Vista Del Puerto			1836 Locust Avenue	Long Beach					

Abbey Apartments			625 S San Pedro St Los Angeles, CA 90014	Lo Angeles	90014			Multi-Family and JB,	(1213) 683-0522
Aldridge Apartments			801 W 23rd St	Lo Angeles	90007			Multi-Family; Jin	(866) 933-2293 ext.35755 (323) 665-2736
Allesandro Street Apts.			1934 Allesandro St	Lo,Angelo,	90039			Disabled; lbr	(213) 628-1036
Alvarado Gardens			1800 N. Alvarado St	Lo,Angelo,	90026			Multi-Family; lbr; 2in,3in	(323) 660-0605, (650) 968-2660
Angelina Apartments			1336W Angelina St Los Angeles, CA 90026	Lo,Angelo,	90026			Multi-Family; 2br; 3in,4in	(213)482-1600
Angelus Plaza			2555 Hill St.	Lo,Angelo,	90012			Multi-Family; lbr	(866) 933-2293 ext.40357
Adams Square		Special needs	1563 South Arlington Ave.	Lo,Angelo,	90019				(323) 757-0670 Ex*105
Baldwin Hills Apartments			4063 Nicolet Ave.	Lo,Angelo,	90008			Multi-Family; lbr; 2in, 3in	(323) 227-5260
Baldwin Hills Apartments			4063 Nicolet Ave.	Lo,Angelo,	90008			Multi-Family; lbr; 2in, 3in	(323) 227-5260
Barnsdall Court Apartments			1632 Normandie Ave.	Lo,Angelo,	90027			Multi-Family; lbr	(323) 906-1604
Bartlett Hill Manor			625 North Bunker Hill Ave.	Lo,Angelo,	90012			Multi-Family; lbr	(213) 626-6555
Beverly City Lights			107 S. Carondelet St	Lo,Angelo,	90057			Jin, 2in, 3in	(213) 380-7935
Boyle Apartment,			427 S. Boyle Ave.	Lo,Angelo,	90033			Multi-Family; lbr; 2in	(213) 252-5997
Caroline Severance Manor		Special needs	2936 West Eight St.	Lo,Angelo,	90005			Multimilly	(213) 375-3906
Casa Rampart Apartments			512 S.Rampart Blvd.	Lo,Angelo,	90057			Studios	(213) 383-3525
Casanova Gardens				Lo,Angelo,	90012			213,	(323) 223-4198
Cesar Chavez Gardens			Gardens 555 W. Cesar E. Chavez	Lo,Angelo,	90012			2Br, 3Br, 4Br	(323) 437-9706
Chariton Apartments			2010 Chariton Apartment	Lo,Angelo,	90034	Central Los Angeles	8	Studio, lbr, 2Br, 3Br, 4Br	(866) 933-2293 Ext 79425
Cochran City Light,			1315 South Cochran Ave.	Lo,Angelo,	90019			Multi-Family; 3br	(323) 936-6497
Coronel Apartments			2641 S Manhattan Pl.	Lo,Angelo,	90018				(213) 884-7172
Coronel Apartments			1601 N.Hobart Blvd.	Lo,Angelo,	90027				
Cuatro Vientos Apartments				Lo,Angelo,	90032			Multi-Family; 1-4 Bedroom	(323)221-1800
East LA North I			3333N.Mission Rd.	Lo,Angelo,	90031			Multi-Family; lbr; 2in	(323) 227-5260
Evergreen Village Apartments			420 North Evergreen Ave.	Lo,Angelo,	90033			Multi-Family; lbr-4in	(323) 780-0612
Figueroa Place			1320 W Sunset Blvd.	Lo,Angelo,	90026			2Br, 4Br	
Flor #01 Lofts			401 E 7th St.	Lo,Angelo,	90014				Call SRHT at (213) 873-1680 or 213-683-0522 for availability
Grand & Venice			1500 S. Grand Ave.	Lo,Angelo,	90007			Multi-Family	(213)741-9374
Hancock Gardens Apt			303 S. Van Ness Ave.	Lo,Angelo,	90031			Multi-Family; 2br, 3in	(323)231-4174
Hollywood City Light,			127th St.	Lo,Angelo,	90044			Multi-Family; 2br, 3in, 4b	(323)779-1645
Harbour Community		Unhoused, Victims of DV	12157 San Fernando Rd	Lo,Angelo,	91342	San Fernando Valley		lbr, 2Br	(818) 364-7039
Hoover Street Apartments		IDV/AIDS	962 S. Hoover St	Lo,Angelo,	90006			Multi-Family	(213) 387-7085
Imogen Housing			716 Imogene Ave.	Lo,Angelo,	90026			Multi-Family; 2br, 3in, 4in	(323) 660-6102
Innes Height,		disabled	1245 E. Innes Ave.	Lo,Angelo,	90026				(844) 349-8886
I.A. PRO			1011 N. Cumming St.	Lo,Angelo,	90033			Multi-Family; lbr; 2in	(323)221-0172
Las Margaritas Apartments			137 N. Soto St	Lo,Angelo,	90033			Multi-Family; Studio-3br	(323) 262-2453
Leland Courts			5234 Melrose Ave.	Lo,Angelo,	90038			Studios, lbr	(323)231-1107 (323) 883-9000
Linda Vista Senior Apartments			630 S. St. Louis St.	Lo,Angelo,	90023			Senior; Studios, Jin	(323) 685-2826
Lomm Height,			3327 E. Sabina St	Lo,Angelo,	90023			Multi-Family; 2br, 3in	(323) 780-1700
Lomm Height,			3710 E. J. Egel St.	Lo,Angelo,	90063				213-400-0002
Mariposa Place			5030 Santa Monica Blvd.	Lo,Angelo,	90029			Multi-Family; lbr; 2in, 3in, 4in	(323) 644-1878
Roland Curtis East/West			1077 W. 38th Street	Lo,Angelo,	90037				(213)261-5068; <a href="http://rollandcurtis@abodecommunities.org">rollandcurtis@abodecommunities.org</a>
SHARE! - Bright Path	Open		Cross Streets S Avalon Blvd. & Slauson Ave.	Lo,Angelo,					1-877-742-7349
SHARE! - Grateful House	Open	Women	Cross Streets: S Avalon Blvd. & E Martin Luther King Jr. Blvd.	Lo,Angelo,					1-877-742-7349
SHARE! - Kimberly's House	Open		Cross S - : S Grameny Pl. & W. 81st Street	Lo,Angelo,					1-877-742-7349
SHARE! - Precious House	Open		Cross Streets: San Pedro St & E Adams Blvd.	Lo,Angelo,					1-877-742-7349
Silverlake New Hope Apartment,			2301 Brier Ave.	Lo,Angelo,	90006				(213) 387-7085 (323) 838-8556
Springbaven			1853 E. 118th Street	Lo,Angelo,	90059				<a href="http://www.linchousing.org">www.linchousing.org</a> (562) 257-5100 (call cent.,) (323) 734-2574
The Crenshaw Villas			2645 S Crenshaw Blvd	Lo,Angelo,	90016				(323) 804-3156
Tune, Apt		disabled	7000-14 S Hoove, St	Lo,Angelo,	90044			Multi-Family; 2br	(213)240-1255
Waterloo Heights Apts		Unhoused/families and TAY	1011 Waterloo St.	Lo,Angelo,	90028				
Westmont Vista	Reserem, Only		1763 W Imperial Hwy	Lo,Angelo,	90047	Los Angeles	38	1 Br, 2Br, 3Br	213-225-2728
William Mead Homes			1316 N Main St	Lo,Angelo,	90012			Multi-Family	(323) 221-9197
PATIMetro Villas			320-340 Madison Ave	Lo, Angeles	90004				(323) 644-2200; <a href="mailto:path@epath.org">path@epath.org</a>
1375 St Andrews Apartments			1365-1375 St Andrews Place	Los Angeles	90028				(323) 462-2572
Hollywood City Light,			525 W 127th St	Lo Angeles- A l h e n s / W -	90044	C - . J Lo, Angeles			(323) 779-1645
Turner, A p -	Open		7000-14 S Hoover St	Lo Angeles- A l h e n s / W -	90044	C - . J Lo, Angeles	32	213,	Mariane White (323) 804-3156 o.-(323) 486-5324; application available onsite Monday- Friday from 9am- 5pm; <a href="http://www.solary-entcom">www.solary-entcom</a>
Baldwin Hills Apartments			4063 Nicolet Ave	Lo Angeles- Baldwin Hills/ Crenshaw/ Leimert Park	90008	C - . J Lo, Angeles			(323) 227-5260
Boyle Apartment,			427 S Boyle Ave	Lo Angeles- Boyle Heights	90033	C - . J Lo, Angeles		JB, 213,	(213) 252-5997
Cuatro Vientos Apartments			5331 E Huntington Drive N	Lo Angeles- Boyle Height,	90032	C - . J Lo, Angeles		JB,,213,,313,,413,	(323) 221-1800
Evergreen Village Apartments			420 N Evergreen Ave	Lo Angeles- Boyle Height,	90033	C - . J Lo, Angeles		JB,,213,,313,,413,	(323) 780-0612
I.A. PRO I			1011 N Cumming St	Lo Angeles- Boyle Height,	90033	C - . J Lo, Angeles		JB,,213,	(323)221-0172
Las Margaritas Apartments			137N Soto St	Lo Angeles- Boyle Height,	90033	Central Los Angeles		Studio, lbr, 2Br, 313,	(323) 262-2453

Linda Vista Senior Apartments			630 S St Louis St	Los Angeles - Boyle Heights	90023	Central Los Angeles		Studio, 1Br	(323) 685-2826
HmtVillage			6941 Owensmouth Avenue	Los Angeles - Canoga Park	91303			3Br, 2Br	Angelita (818) 704-5983; hart@abodecommunities.org;
NoblePinesApartments	Co,od		21617 SaticoySt	Los Angeles - Canoga Park	91304	San Fernando Valley	68	1Br, 2Br, 3Br, 4Br	Sreplwre (818) 884-2160
East I A North I			3333 N Mission Rd	Los Angeles - Central LA	90031	Central Los Angeles		1Br, 2Br	(323) 227-5260
Bartlett Hill Manor			625 N Bunker Hill Ave	Los Angeles -	90012	Central Los Angeles		##	(213) 626-6555
Casanova Gardens			433 Casanova St	Los Angeles -	90012	Central Los Angeles		2B,	(323) 223-4198
Cesar Chavez Gardens			555 W Cesar E Chavez	Los Angeles -	90012	Central Los Angeles		2Br, 3Br, 4Br	(323) 437-9706
VistaHomes		Persons with developmental disabilities or who are blind.	23210 Justice	Los Angeles -	90012	Central Los Angeles			(818)778-1900; (818) 708-1740
William Mead Homes			1316NMainSt	Los Angeles -	90012	Central Los Angeles			(323) 221-9197; 2132522500
A b b e y A p -			625 S San Pedro St	Los Angeles - DTLA	90014	Central Los Angeles		##	(213) 683-0522
Alegria Apartments			801 W23 St	Los Angeles - DTLA	90007	Central Los Angeles		##	(866) 933-2293 Ext 35755
Angelus Plaza			2555Hil1St	Los Angeles - DTLA	90012	Central Los Angeles		##	(866) 933-2293 Ext 40357
Grend&Venice			1500 S Grand Ave	Los Angeles - DTLA	90007	Central Los Angeles			(213)741-9374
The Clark Residence			306 S LomaDr	Los Angeles - DTLA	90017	Central Los Angeles		Multi-Family: 1br	(213) 484-1329
Young Apanem			1621 S Grand Ave	Los Angeles - DTLA	90015	Central Los Angeles		1Br/Multifamily	(866) 933-2293 Ext 11864
Lorena Heights A p - - -	Co,od		3327 E Sabina St	Los Angeles - East LA	90023	East Los Angeles		2Br, 3Br	(323) 780-1700
			3710 Bagel StB	Los Angeles - East LA	90063	East Los Angeles			(213) 400-0002
Allesandro Street Apartments		Persons with disabilities	1934 Allesandro St	Los Angeles - Echo Park/Silverlake	90039	Central Los Angeles		##	(323) 665-2736; (213) 628-1036
Alvarado Gardens			1800 N Alvarado St	Los Angeles - Echo Park/Silverlake	90026	Central Los Angeles		1Br, 2Br, 3Br	(323) 660-0605; (650) 968-2660
A n g e l i o a A p -			1336W AngelioaSt	Los Angeles - Echo Park/Silverlake	90026	Central Los Angeles		2Br, 3Br, 4Br	(213)482-1600
Imogen Housing			716 Imogene Ave	Los Angeles - Echo Park/Silverlake	90026	Central Los Angeles		2Br, 3Br, 4Br	(323) 660-6102
mne,Heights		Persons with disabilities	1245 E Innes Ave	Los Angeles - Echo Park/Silverlake	90026	Central Los Angeles			(844) 349-8886
Silverlake New Hope Apanem		III/AIDS	2301 Brier Ave	Los Angeles - Echo Park/Silverlake	90006	Central Los Angeles			(213) 387-7085; (323) 838-8556
Women's Village Project		III/AIDS; Disability	1660 Rockwood St	Los Angeles - Echo Park/Silverlake	90026	Central Los Angeles		2B,	(213) 483-6654; (714) 282-2520
Balboa G,rule A p -			10620 Balboa Blvd	Lo,Angele,-Granadallills	91344	SanFern,ndo V,lley		##	(818) 831-1432
Balboa G,rule A p -			10620 Balboa Blvd.	Lo,Angele,-Granadallills	91344	SanFern,ndo V,lley		##	818-831-1432
Beverly City Lights			107 S Carorulet St	Lo,Angele,-Hollywood	90057	Cenual Lo, Angele,		1Br, 2Br, 3Br	(213) 380-7935
Casa Rampart Apartments			5 1 2 S - B 1 v d	Lo,Angele,-Hollywood	90057	Cenual Lo, Angele,		Studios	(213) 383-3525
Leland Courts			5234 Melrose Ave	Lo,Angele,-Hollywood	90038	Cenual Lo, Angele,		Studios, 1Br	(323) 231-1107; (323) 883-9000
RoyalAp'l'I			772-6NVanNessAve	Lo,Angele,-Hollywood	90038	Cenual Lo, Angele,		Studio, 1Br, 2Br	(323) 231-1107; (323) 883-9000
The Courtyard at La Brea			1145NLaBreaAve	Lo,Angele,-Hollywood	90038	Cenual Lo, Angele,			(323) 654-2766
Waterloo Heights Apartments		Persons with disabilities	1011 Waterloo St	Lo,Angele,-Hollywood	90028	Cenual Lo, Angele,			(213)240-1255
The Depot at Hyde Park	Co,od		6527 Crenshaw Blvd	Lo,Angele,-Hyde Park	90043		48	1 Br, 2 Br, 3 Br	213-433-0208 ' 211 ' (888) 877-5379 ' California Relay 711 www.depotathydepark.com
Caroline Severance Manor			2936 W Eight Street	Lo,Angele,-Koeau,wn	90005	Cenual Lo, Angele,			(213) 375-3906
Magnolia City Lights		Special needs	2885 Leeward Ave	Lo,Angele,-Koeau,wn	90005	Cenual Lo, Angele,			(213) 365-8135
SHARE! - A Place of Peace	Open		Cross Streets Shenandoah Ave. & Slauson Ave.	Lo,Angele,-u,deraHeights					1-877-742-7349
Hancock - -			303 S Van Ness Ave	Lo,Angele,-Lincoln Heights	90031	Cenual Lo, Angele,		2Br, 3Br	(323)231-4174
MariposaPlace			5030 Santa Monica Blvd	Lo,Angele,-LittleArmenia	90029	Cenual Lo, Angeles		III,2III,3III,4III	(323) 644-1878
Barnsdall Court Apartments			1632 NormandieAve	Los Angeles - Los Feliz	90027	Cenual Lo, Angeles		III	(323) 906-1604
Priooes Apartments			1648 N Kingsley Dr	Los Angeles - Los Feliz	90027	Cenual Lo, Angeles		Multi-Family: 1br	(213) 252-5997
A r - S q u a r e		Special needs	1553 S Arlington Ave	Lo, Angeles - Mid City	90019	Cenual Lo, Angeles			(323) 757-0670 ext 105
Codmm City lights			1315 S Cochran Ave	Lo, Angeles - Mid City	90019	Cenual Lo, Angeles		3B,	(323) 936-6497
The Cleo Apartments			345 SAlexandria.Ave	Lo, Angeles - Mid City	90020	Cenual Lo, Angeles			(213) 389-1050
			2641 S Manhattao H	Lo, Angeles - Mid City	90018	Cenual Lo, Angeles			(213) 884-7172
Academy Village A p -	Co,ood		5225 Blakeslee Ave	Lo,Angeles- N - Hollywood	91601	SanFernandoValley	248	III,2III	CoontactKathyWood(Manager) (818) 985-8277; equityapartments.com
Bella Vista	Open		15520 Parthenia St	Lo,Angeles- N - Hills	91343	SanFernandoValley		4B,	818-767-4700
Perthelia Townhomes			15520 Parthenia St	Lo,Angeles- N - Hills	91343	SanFernandoValley		3B,	(818) 901-6019
S&AProperties	N/A: Private			Lo,Angeles- N - Hills	91343	SanFernandoValley		III,2III,3III	818-901-6019
			8435 OrianAve	Lo,Angeles- N - Hills	91343	San Fernando Valley		3B,	(818) 904-6019

Academy Village A p -			5225 Blakeslee Ave.	Lo, Ailgcle, - North Hollywood	91601	San Fernando Valley		!Br, 2Br	(844) 529-4848 (818) 600-6676; moorpark.bergasandgarfield.com; mo01park@woodbridgegarfield.com, moorpark@bergasandgarfield.com
Woodbridge Park A p -			11220 Moorpark St	Lo, Ailgcle, - North Hollywood	91602	San Fernando Valley		!Br, 2Br, 3Br	
Hoover Street A p -			963 Hoover St	Lo, Ailgcle, - Pico Union	90006	CentraLo, Angeles			(213) 387-7085
Nuevo Pico Union Apartments SHARE! - Foundation for Homeless Heroes	Open	liv/AIDS Med45+	1335 W. 17th Street Cross Streets: S Weston Ave. & Venice Blvd.	Lo, Ailgcle, - Pico Union	90006	CentraLo, Angeles		2Br, 3Br	(213) 483-2767 1-877-742-7349
Roscoe Park Apartments			21025 Roscoe Blvd	Lo, Ailgcle, - S. ead	91304	San Fernando Valley		2Br, 3Br	(818) 998-3201 (323) 838-8556 (323) 622-0006
NYUMBA Apts San Pedro New Hope Courtyard Apts			962 S - Hoover St 1124 S. Palos Verdes St	Lo, Ailgcle, - San Pedro	90006 90731				(310) 831-6851 (323) 838-8556
Washington 722 TOD			722, 726, 732, 736 E. Washington Blvd.	Lo, Ailgcle, - Southeast	90021		55	1Br & 1Bth, 2Br & 1Bth, 3Br & 2Bth	(213) 748-1557
Harbour Community		houseless; domestic violence	12157 San Fernando Rd.	Lo, Ailgcle, - Sylmar	91342	San Fernando Valley		!Br, 2Br	(818) 364-7039
Ivy Terrae			13751 Sherman Way	Lo, Ailgcle, - Van Nuys	91405	San Fernando Valley		!Br, 2Br, 3Br, 4Br	(818) 781-3519
United Cerebral Palsy Evergreen Manors Garfield Villas		Persons with disabilities	111 S Margarita Ave	Monrovia Moutery/Parc	91016 91754	San Gabriel Valley San Gabriel Valley		4Br, 5Br	(818) 782-2211 (626) 458-1462 (626) 300-0680
Pacific Bridge Adult Res Fae Garfield Villas			500 S Mcph= in Ave	Moutery/Parc Montney/Parc	91754 91754	San Gabriel Valley		!Br	(323) 721-1655 (626) 300-0680
Angeles City Lights Camino Gonzales Farmworker A . -	Open		13915 West Oxnard 481 W Gomales Rd	Oxnard	91410	Ventura Cowty	49	3Br, 4Br	Call (818) 988-0275 to receive application through email or onsite; www.triumphresidential.com (805) 981-9909
Casa San Juan Apartment			500 Hobson Way	Oxnard		Ventura Cowty			(805) 483-7122
Chanoc Jsalids Park Apartments Homes			931 Bismark Way	Oxnard	93033	Ventura Cowty		!Br, 2Br, 3Br	(805) 486-2906
Colonial House Farmworker A . -	Open	USDA Farmworker AND either U.S. Citizen or Permanent Resident	705 N. Oxnard Blvd.	Oxnard	93030	Ventura Cowty			(805) 485-7840; Required: Last 2 years of taxes, DL, SS or Perm Res Card w/Social, last 6 months of bank statements; https://oxnard.pwapt.com/contact.pbp
D Street Apartments			110 N D St	Oxnard		Ventura Cowty			(805) 4967-4948
Gateway Plaza			719 S Oxnard Blvd	Oxnard	93030	Ventura Cowty			(805) 385-3443
Holiday Manor Apartments		low income	1924 Camino Del Sol	Oxnard	93030				(805) 485-3191
Holiday Manor A p -			1924 Camino Del Sol	Oxnard	93030	Ventura Cowty			(805) 485-3191; Roots: !Br \$1,224; 2Br: \$1463, 3Br: \$1683
Las Villas de Paseo	Closed		5493 Cypress Rd.	Oxnard	93033	Ventura Cowty			(805) 986-5010
Las Villas de Paseo	Open		5493 Cypress Rd	Oxnard	93033	Ventura Cowty	72	2Br, 3Br	Call Amy Mon - Fri from 8am - 5pm at (805) 986-5010 to make an appointment. Current waitlist has 100 applicants.
Many Mansions - Houshlg Contral	Closed	TAY (18-24); persons with mental illness disability	110 North D St.	Oxnard		Ventura Cowty			(805) 496-4948
Many Mansions - Terry's Place Meta Street Farmworker Family Apartments	Closed		352 & 354 Chmnd Islands Blvd 501 Meta St	Oxnard	93033 93030	Ventura Cowty			(805) 497-0344 (805) 659-3791
Paseo Del Luz, Apartments			47 W Gonzales Rd	Oxnard		Ventura Cowty			(805) 983-7126
Paseo Sama Clara/ Del Rio A . -			287 Riverpark Blvd.	Oxnard					(805) 485-2260
Paseo Sama Clara/ Del Rio A . -			287 Riverpark Blvd	Oxnard		Ventura Cowty			(805) 485-2260
RHF Sonata at Riverpark			401 Danvers River St	Oxnard	93036	Ventura Cowty			(805) 531-5899 (805) 486-7700;
Terraza de Cortes			201 Carmelia Ct	Oxnard	93030	Ventura Cowty			terrazedelascortes@levinegroups.com
Terry's Place			352 & 354 Chmnd Islands Blvd	Oxnard	93033	Ventura Cowty			(805) 497-0344
Villa Cesar Chavez Farmworker Family A -	Open	USDA program. Restriction: ONLY head of household must be a current, retire, or disable agricultuiml worker	5559 Salvador Ili	Oxnard	93033	Ventura Cowty	51	2Br, 3Br, 4Br	Call Kristina (Resident Manager) at (805) 271-1067 or email cheredia@cabrilloedc.org; applicants will be offered unit in the order they applied in; www.cabrilloedc.org
Villa Cesar Chavez Farmworker Family A -			5559 Salvador Drive	Oxnard					(805) 271-1067
Vills Madera	Open		1051 North A St	Oxnard	93030	Ventura Cowty			(805) 988-9035
Villa Solimar Family A . - - Cabrillo BCD			902 Donlon St	Oxnard		Ventura Cowty			(805) 483-5188
Vineyard Gardens	Closed		161 W Stroube St	Oxnard	93036	Ventura Cowty			(805) 604-0474; www.wng.com
Wagon Wheel Apartments	Open	No Pet	510 Winchester Ili	Oxnard	93036	Ventura Cowty	25 property, 120 units managed by Raquel	1Br, 2Br, 4Br	Raquel (805) 604-4520; Application available via email and onsite; www.cabrilloedc.org Ariana (661) 285-3118 or Cyotlia (661) 285-3118; apartments.com/casablancaapptliving.com 800-801-8440 ext 7206 (661) 266-2997 (661) 947-6336 (626) 405-9447 (626) 405-9447
Casa Blanca Apartments	Priority given in order of application	All ages.	4160 East Avenue R	Palmdale	93532	Aorelope Valley	200	2Br, 3Br	
Coursons Arts Colony West Longhorn Pavilion			East Avenue Q II 36523 25th St East	Palmdale Palmdale	93550 93550	Los Angeles Los Angeles		2Br, 3Br 2Br, 3Br	
Palmdale East Q Apartments Acapella of Pasadena Acapella of Pasadena Acapella of Pasadena			1000 East Ave Q 145 Chestnut St 231 S DeLacey Ave 231 S. DeLacey Ave.	Palmdale Pasadena Pasadena Pasadena	93550 91103 91103 91103	Aorelope Valley San Gabriel Valley San Gabriel Valley		!Br, 2Br, 3Br Multifamily	(661) 947-6336 (626) 405-9447 (626) 405-9447 (626) 405-9447
Allen House			1808 Las Lunas	Pasadena	91104			1Br fur disabled/elderly	Damioon Lee (626) 449-2919
Casa D'Orol			1370 N Dominion Ave.	Pasadena	91104			1Br fur disabled/elderly	(626) 449-2919
Dudley House		Persons with disabilities/ Seniors	2131 E Broadway St	Pasadena	91104	San Gabriel Valley	62	1Br fur disabled/elderly; 2 Br for all MJES.	(626) 449-2919





# SENIOR & VETERAN HOUSING LISTINGS

This section lists contact information for housing that is reserved for seniors and/or veterans, or offers services targeted to seniors and/or veterans.



HOUSING RIGHTS CENTER

WORKING FOR JUSTICE AND EQUALITY IN HOUSING

## ADULTS 62+ Housing Opportunity in Los Angeles

**LOW-INCOME ONE & TWO-BEDROOM APARTMENTS FOR ADULTS AGE 62+! Noble Senior Housing, an existing building located at 15100 Moorpark St., Sherman Oaks, CA 91403 will be accepting applications to add to an existing waiting list.**



### **ELIGIBILITY TO APPLY**

**AGE:** The head of household must be at least 62 years old at the time of application.

**INCOME:** Minimum annual income of \$26,667

Maximum annual income of \$48,550 for one person; \$55,450 for two people

The minimum income requirement does not apply to households with a Section 8 voucher. This is a Low-Income Housing Tax Credit Property. Current rents range from \$1,000 to \$1,560 per month.

**Application requests will be taken from  
January 13, 2025, at 9:00 am through February 28, 2025, at 12:00 pm  
OR until we receive 1,000 application requests, whichever comes first.**

We will not accept requests made prior to the start date and time. Applications will be sent out within one week of the request being made.

**Request an application by calling (310) 281-2837** to receive an application by mail or by submitting a request through e-mail to [nswl@mhfla.org](mailto:nswl@mhfla.org). E-mail requests for applications **MUST** include the following information in the body of the e-mail to be considered: (1) the full name of the head of household applying, (2) complete mailing address and phone number, (3) preference for application to be sent by mail or through e-mail.

Applicants may also obtain a conventional waitlist application and/or request to be added to the accessible unit waitlist by submitting a request through the Housing Registry on [accesshousingla.org](http://accesshousingla.org). If a request is received while the waiting list is accepting conventional application requests, a conventional waiting list application will be emailed to the applicant(s) and must be returned by the deadline listed below to be considered for eligibility for the conventional waitlist. This property has 7 accessible units, and there is no limit to the number of applicants who can apply for these units.

### **APPLICATIONS WILL NOT BE AVAILABLE AT THE BUILDING SITE!**

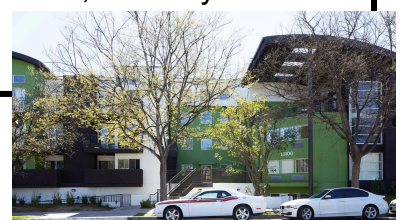
All conventional waiting list applications must be completely filled out, signed, and returned to Menorah Housing Foundation to be considered. If returning by mail, the application needs to be mailed to 10991 W. Pico Blvd., Los Angeles, CA 90064 and postmarked by 3/28/25. If returning by e-mail, ensure all pages are legibly scanned and send to [nswl@mhfla.org](mailto:nswl@mhfla.org) by 3/28/25.

No more than one application per household will be provided or accepted. Incomplete applications and duplicate applications will be rejected. A virtual lottery will be held in the spring of 2025. Approximately 550 applications will be drawn and added to the existing waiting list.

This property has accessible units and/or units with accessible features; an interested person can contact our staff to inquire about particular features. Individuals with Disabilities have the right to ask for and receive reasonable accommodations, including the right to ask for auxiliary aids and services, and communications in alternative formats. A request can be made by contacting Dawn Beebe, Director of Operations, (310) 475-6083 extension 214 or email at [dbeebe@mhfla.org](mailto:dbeebe@mhfla.org). Persons with hearing or speech disabilities may dial 711 to reach the Telecommunications Relay Service to contact our office. If Limited English Proficiency (LEP) services are needed, please contact our staff.

Amenities include two elevators, ramp to front entrance, no steps to units, gated and covered parking lot (parking availability is not guaranteed), ADA stoves, refrigerators, grab bars, lowered peep holes, community room with kitchen, laundry room with a front-loading machine, and an on-site Resident Service Coordinator.

This housing is offered without regard to race, color, religion, sex, gender, gender identity and expression, familial status, national origin, citizenship status, immigrant status, primary language, marital status, ancestry, age, sexual orientation, disability, source of income (including receipt of Section 8 and other similar vouchers), genetic information, military or veteran status, arbitrary characteristics, or any other basis currently or subsequently prohibited by law.



[www.mhfla.org/properties/noble-senior-housing/](http://www.mhfla.org/properties/noble-senior-housing/)

## ACCEPTING APPLICATIONS BEGINNING: DECEMBER 2, 2024

- Tax Credit Community for 55+
- Studio Units with Modern Amenities
- Rooftop Terrace
- BBQ Area
- Outdoor Courtyard

**Note: The property does not have on-site parking available.**



[www.tsahousing.com](http://www.tsahousing.com)



[montecito2@tsaproperties.com](mailto:montecito2@tsaproperties.com)



PHONE: (310) 820-2236

TTY: (800) 855-7100

## HOW TO APPLY

**Applications Available Beginning:** December 2, 2024

Request an application by **EMAIL** at:  
[montecito2@tsaproperties.com](mailto:montecito2@tsaproperties.com)

**Download and print** at:  
<https://www.tsahousing.com/property/themontecito2>

Pick up **ON-SITE** at:  
6650 W. Franklin Avenue, Los Angeles, CA 90028

**Email Completed Applications To:**  
[apply@tsaproperties.com](mailto:apply@tsaproperties.com)

**Mail Completed Applications To:**  
The Montecito II, c/o The Montecito  
6650 W. Franklin Avenue, Los Angeles, CA 90028

The Montecito II is an affordable, tax-credit housing community for 55 and older, located in Los Angeles, California. Applicants must age qualify at the time of application. All applications submitted will be added to the existing waiting list in chronological order, by date and time received.





# The Montecito II

6658 W. Franklin Avenue, Los Angeles, CA 90028



## ABOUT THE PROPERTY

The Montecito II is a 64-unit, tax credit affordable housing community for people 55 and older. Located in the heart of Hollywood, CA, The Montecito II provides easy access to parks, shopping, and a community center.

The Montecito II offers studio units with modern amenities. Unit features include a full kitchen, a tub or shower in the bathroom, garbage disposal, window blinds, air-conditioning, and vinyl plank flooring.

The property boasts a rooftop terrace with views of the iconic Hollywood Hills. The terrace offers a barbeque area, seating, and lush landscaping. This community features secured access and on-site management and maintenance staff. Ongoing regularly scheduled events include monthly resident parties, coffee socials, bingo, fitness classes, movie nights, and inclusive holiday celebrations.

## PROPERTY AMENITIES

- Computer Lab
- Fitness Room
- On-Site Laundry Facilities
- BBQ Area
- Community Room
- Outdoor Courtyards
- Bicycle Storage
- Rooftop Terrace with views of the iconic Hollywood Hills

## RENT/ INCOME RESTRICTION

The Montecito II is an affordable tax-credit housing apartment community located in Los Angeles, California. To qualify for the age-restricted units, applicants must be 55 and older at the time of application, and applicants must have a gross monthly income that is at least twice the monthly rent. Voucher holders do not need to meet the minimum gross monthly income requirement. **Subject to change**

Unit Size	Occupancy	Rent/Month	Min. Gross Monthly Income
Studio	Min. 1 / Max. 2	\$1,425	\$2,850

## INCOME LIMITS

Applicants must have incomes below the 60% AMI for Los Angeles County for their household size. See the chart below. **Subject to change.**

1 Person	2 People
\$58,260	\$66,540

## PARKING

The property **does not** have on-site parking available.

Free interpretation services available. Please contact [montecito2@tsaproperties.com](mailto:montecito2@tsaproperties.com) to make this request. Hay servicios de interpretacion gratuitos disponibles. Porfavor envie un correo electronico a [montecito2@tsaproperties.com](mailto:montecito2@tsaproperties.com) para obtener ayuda.

This housing is offered without regard to race, color, religion, sex, gender, gender identity and expression, familial status, national origin, citizenship status, immigrant status, primary language, marital status, ancestry, age, sexual orientation, disability, source of income (including receipt of Section 8 and other similar vouchers), genetic information, military or veteran status, arbitrary characteristics, or any other basis currently or subsequently prohibited by law.

This property has accessible and adaptable units for people with disabilities. People with disabilities may ask for, and receive reasonable accommodations, modifications, and auxiliary aids, including in the application process. Please contact [montecito2@tsaproperties.com](mailto:montecito2@tsaproperties.com) to make this request.

This property is a 100% non-smoking community



## ACEPTANDO SOLICITUDES EMPEZANDO: 2 DE DICIEMBRE DE 2024

- Comunidad de crédito fiscal para mayores de 55 años
- Unidades de estudio con comodidades modernas
- Terraza en la azotea
- Área de barbacoa
- Patio al aire libre

**Nota: La propiedad no tiene estacionamiento disponible.**



[www.tsahousing.com](http://www.tsahousing.com)



[montecito2@tsaproperties.com](mailto:montecito2@tsaproperties.com)



TELÉFONO: (310) 820-2236

TTY: (800) 855-7100

## CÓMO APLICAR

**Solicitudes disponibles a partir del:** 2 de diciembre de 2024

Solicite una solicitud por **CORREO ELECTRÓNICO** a:  
[montecito2@tsaproperties.com](mailto:montecito2@tsaproperties.com)

**Descargar e imprimir en:**  
<https://www.tsahousing.com/property/themontecito2>

Recogida **EN EL SITIO** en:  
6650 W. Franklin Avenue, Los Angeles, CA 90028

**Envíe por correo electrónico las solicitudes completadas a:**  
[apply@tsaproperties.com](mailto:apply@tsaproperties.com)

**Envíe las solicitudes completadas a:**  
The Montecito II, c/o The Montecito  
6650 W. Franklin Avenue, Los Angeles, CA 90028

Montecito II es una comunidad de viviendas asequibles con crédito fiscal para personas de 55 años o más, ubicada en Los Angeles, California. Los solicitantes deben calificar por edad al momento de la solicitud. Todas las solicitudes enviadas se agregarán a la lista de espera existente en orden cronológico, por fecha y hora de recepción.



# The Montecito II

6658 W. Franklin Avenue, Los Angeles, CA 90028



## SOBRE LA PROPIEDAD

Montecito II es una comunidad de viviendas asequibles con crédito fiscal de 64 unidades para personas de 55 años o más. Ubicado en el corazón de Hollywood, CA, The Montecito II ofrece fácil acceso a parques, tiendas y un centro comunitario.

El Montecito II ofrece unidades tipo estudio con comodidades modernas. Las características de la unidad incluyen una cocina completa, una bañera o ducha en el baño, triturador de basura, persianas, aire acondicionado y pisos de tablonetes de vinilo.

La propiedad cuenta con una terraza en la azotea con vistas a las icónicas colinas de Hollywood. La terraza ofrece una zona de barbacoa, asientos y un paisaje exuberante. Este complejo cuenta con acceso seguro y personal de administración y mantenimiento en el lugar. Los eventos programados regularmente incluyen fiestas mensuales para residentes, reuniones sociales con café, bingo, clases de ejercicios, noches de cine y celebraciones navideñas inclusivas.

## AMENIDADES DE LA PROPIEDAD

- Laboratorio de Computación
- Sala de fitness
- Lavandería
- Área de barbacoa
- Sala comunitaria
- Patios al aire libre
- Almacenamiento de bicicletas
- Terraza en la azotea con vistas a las icónicas colinas de Hollywood

## RENTA/RESTRICCIÓN DE INGRESOS

Montecito II es un complejo de apartamentos de viviendas con crédito fiscal asequible ubicado en Los Ángeles, California. Para calificar para las unidades con restricción de edad, los solicitantes deben tener 55 años o más al momento de la solicitud, y los solicitantes deben tener un ingreso mensual bruto que sea al menos el doble del alquiler mensual. Los titulares de vales no necesitan cumplir con el requisito de ingreso mensual bruto mínimo. Sujeto a cambios

Tamaño	Min/Max Personas	Renta/Mes	Mín. Ingreso mensual bruto
estudio	Min. 1 / Max. 2	\$1,425	\$2,850

## LÍMITES DE INGRESOS

Los solicitantes deben tener ingresos inferiores al 60 % del AMI del condado de Los Ángeles para el tamaño de su hogar. Consulte el cuadro a continuación. Sujeto a cambios.

1 persona	2 personas
\$58,260	\$66,540

## ESTACIONAMIENTO

La propiedad **no tiene estacionamiento** disponible.

Hay servicios de interpretación gratuitos disponibles. Por favor envíe un correo electrónico a [montecito2@tsaproperties.com](mailto:montecito2@tsaproperties.com) para obtener ayuda.

Esta vivienda se ofrece sin distinción de raza, color, religión, sexo, género, identidad y expresión de género, estado familiar, origen nacional, estado de ciudadanía, estado de inmigrante, idioma principal, estado civil, ascendencia, edad, orientación sexual, discapacidad, fuente de ingresos (incluido el recibo de la Sección 8 y otros vales similares), información genética, condición de militar o veterano, características arbitrarias o cualquier otra base prohibida actualmente o posteriormente por la ley.

Esta propiedad cuenta con unidades accesibles y adaptables para personas con discapacidad. Las personas con discapacidades pueden solicitar y recibir adaptaciones, modificaciones y ayudas auxiliares razonables, incluso durante el proceso de solicitud. Por favor comuníquese con [montecito2@tsaproperties.com](mailto:montecito2@tsaproperties.com) para realizar esta solicitud.

Esta propiedad es una comunidad 100% para no fumadores.





# ACCEPTING APPLICATIONS



Tax Credit Community  
for 55+

Located in Los Angeles, CA



[www.tsahousing.com](http://www.tsahousing.com)



[casalucerna@tsaproperties.com](mailto:casalucerna@tsaproperties.com)



Office: (323) 266-3313

TTY: (800) 855-7100

## HOW TO APPLY

**Download and print at:**  
<https://www.tsahousing.com/property/casalucerna>

Pick up **ON-SITE** at:  
1025 S. Kern Avenue, Los Angeles, CA 90022

**Mail Completed Applications To:**  
Casa Lucerna, Attn: Manager's Office  
1025 S. Kern Avenue, Los Angeles, CA 90022

Casa Lucerna is a 75-unit, tax credit building located in East Los Angeles, CA for people 55 and over. All applicants must age qualify at the time of application and all applications submitted will be added to the existing waiting list in chronological order, by date and time received.



# Casa Lucerna

1025 S. Kern Avenue, Los Angeles, CA 90022



## ABOUT THE PROPERTY

Casa Lucerna is a 75-unit tax credit property located in East Los Angeles, CA for people 55 and over. The property is currently accepting applications for the waiting list. This property accepts Housing Choice (Section 8) and VASH vouchers.

The property offers one-bedroom units. Residents also enjoy lushly landscaped courtyards and a community garden, a gym, and controlled access-covered parking. Activities such as resident parties and off-site trips are regularly scheduled.

## PROPERTY AMENITIES

- Spacious Community Room
- Fitness Room
- Piano
- Billiards Table
- On-Site Laundry Facility
- Computer Area
- Community Garden
- Controlled Access Covered Parking

## RENT/ INCOME RESTRICTION

Casa Lucerna is a 75-unit tax credit property located in East Los Angeles, CA for people 55 and over. Applicants must age qualify at the time of application. To qualify, applicants must have a gross monthly income that is at least twice the monthly rent. Voucher holders do not need to meet the minimum gross monthly income requirement.

**Subject to change**

Unit Size	Occupancy	Rent/Month	Min. Gross Monthly Income
1 BD	Min. 1 / Max. 3	up to \$1,560	\$3,120

## INCOME LIMITS

Applicants must have incomes below the 60% AMI for Los Angeles County for their household size. See the chart below. **Subject to change.**

1 Person	2 People	3 People
\$58,260	\$66,540	\$74,880

## PARKING

Parking is limited. Please inquire with management for more information.

This housing is offered without regard to race, color, religion, sex, gender, gender identity and expression, familial status, national origin, citizenship status, immigrant status, primary language, marital status, ancestry, age, sexual orientation, disability, source of income (including receipt of Section 8 and other similar vouchers), genetic information, military or veteran status, arbitrary characteristics, or any other basis currently or subsequently prohibited by law.

This property has accessible and adaptable units for people with disabilities. People with disabilities may ask for, and receive reasonable accommodations, modifications, and auxiliary aids, including in the application process. Please contact [casalucerna@tsaproperties.com](mailto:casalucerna@tsaproperties.com) to make this request.

This property is a 100% non-smoking community



## ACEPTANDO SOLICITUDES



Comunidad de crédito fiscal  
para 55+

Ubicado en Los Angeles, CA



[www.tsahousing.com](http://www.tsahousing.com)



[casalucerna@tsaproperties.com](mailto:casalucerna@tsaproperties.com)



Oficina: (323) 266-3313

TTY: (800) 855-7100

## CÓMO APLICAR

**Descarga e imprime** la solicitud en:  
<https://www.tsahousing.com/property/casalucerna>

Recoja una solicitud **EN EL SITIO** en:  
1025 S. Kern Avenue, Los Angeles, CA 90022

**Envíe las solicitudes completas a:**  
Casa Lucerna, Attn: Manager's Office  
1025 S. Kern Avenue, Los Angeles, CA 90022

Casa Lucerna es un edificio de crédito fiscal de 75 unidades ubicado en el este de Los Ángeles, CA, para personas de 55 años o más. Todos los solicitantes deben calificar por edad al momento de la solicitud y todas las solicitudes enviadas se agregarán a la lista de espera existente en orden cronológico, por fecha y hora de recepción.

# Casa Lucerna

1025 S. Kern Avenue, Los Angeles, CA 90022



## SOBRE LA PROPIEDAD

Casa Lucerna es una propiedad de crédito fiscal de 75 unidades ubicada en el este de Los Ángeles, CA para personas de 55 años o más. Actualmente, la propiedad está aceptando solicitudes para la lista de espera. Esta propiedad acepta vales de elección de vivienda (sección 8) y VASH.

La propiedad ofrece unidades de un dormitorio. Los residentes también disfrutan de patios con paisajes frondosos y un jardín comunitario, un gimnasio y estacionamiento cubierto con acceso controlado. Las actividades como fiestas de residentes y viajes fuera del sitio se programan regularmente.

## AMENIDADES DE LA PROPIEDAD

- Amplia sala comunitaria
- Sala de fitness
- Piano
- Mesa de billar
- Lavandería
- Área de Computación
- Jardín comunitario
- Estacionamiento cubierto con acceso controlado

## ALQUILER/RESTRICCIÓN DE INGRESOS

Casa Lucerna es una propiedad de crédito fiscal de 75 unidades ubicada en el este de Los Ángeles, CA para personas de 55 años o más. Los solicitantes deben calificar por edad al momento de la solicitud. Para calificar, los solicitantes deben tener un ingreso mensual bruto que sea al menos el doble del alquiler mensual. Los titulares de vales no necesitan cumplir con el requisito de ingreso mensual bruto mínimo. **Sujeto a cambios**

Tamaño	Min. / Max.	Alquiler/Mes	mín. Ingreso Mensual Bruto
1 HAB	Min. 1 / Max. 3	hasta \$1,560	\$3,120

## LÍMITES DE INGRESOS

Los solicitantes deben tener ingresos inferiores al 60 % del AMI del condado de Los Ángeles para el tamaño de su hogar. Vea el gráfico a continuación. **Sujeto a cambios.**

1 Persona	2 personas	3 personas
\$58,260	\$66,540	\$74,880

## ESTACIONAMIENTO

El estacionamiento es limitado. Consulta con la administración para obtener más información.

Esta vivienda se ofrece sin distinción de raza, color, religión, sexo, género, identidad y expresión de género, estado familiar, origen nacional, estado de ciudadanía, estado de inmigrante, idioma principal, estado civil, ascendencia, edad, orientación sexual, discapacidad, fuente de ingresos (incluido el recibo de la Sección 8 y otros comprobantes similares), información genética, estado militar o de veterano, características arbitrarias o cualquier otra base actualmente o posteriormente prohibida por la ley.

Esta propiedad cuenta con unidades accesibles y adaptables para personas con discapacidad. Las personas con discapacidades pueden solicitar y recibir adaptaciones, modificaciones y ayudas auxiliares razonables, incluso en el proceso de solicitud. Comuníquese con [casalucerna@tsaproperties.com](mailto:casalucerna@tsaproperties.com) para realizar esta solicitud.

Esta propiedad es una comunidad 100% para no fumadores.





## **P&P Home for the Elderly, 1030 W. 85<sup>th</sup> St., Los Angeles, CA 90044**

Telephone: (323) 789-1990 Fax: (323) 759-4567 TTY: Call 711 for Relay

Pre Applications for the Waitlist can be submitted on [accesshousingla.org](http://accesshousingla.org)



### **The Waiting List Will be Open Beginning on April 30, 2024 and Stay Open until April 30, 2025**

P&P Home for the Elderly is a three story, 107-unit affordable apartment community for senior citizen located near the corner of Vermont Ave and Manchester Ave in the City of Los Angeles. All applicants must be at least **62 years old** and have verifiable income at or below 50%, 60% or 120% of the Los Angeles median income. The property consists of single units only and no other size units are available. Accessible features at the site include a wheelchair ramp to the main entrance of the building, electronic entrance doors to the lobby and two elevators. The property also features underground parking, two recreation rooms and 24-hour attendants. The minimum income required for all applicants is \$1,300.00 per month. The current rental rate is \$750.00 a month and a \$500.00 security deposit is required at move-in. Tenants are required to pay their own electricity, telephone, and cable TV. There is \$30 application fee to apply for residency. Credit, Criminal and Eviction Check will be done on all applicants prior to approval.

**Applications must be obtained and submitted at the property office located at **1030 W. 85<sup>th</sup> St., Los Angeles CA 90044** between the hours of 11:00 AM and 3:00 PM Monday thru Friday or by email at [pphome1030@gmail.com](mailto:pphome1030@gmail.com). For further information regarding the site please call **(323) 789-1990** during normal business hours. Inquiries about accessible features can also be done by reaching out at the address, email and phone number listed above.**

**This Housing is offered without regard to race, color, national origin, sex, religion, ancestry, genetic information, source of income, age, marital status, familiar status, sexual orientation or preference, gender identity, or disability or any other basis prohibited by law.**



**Individuals with a disability have the right to ask for and receive reasonable accommodations and to request auxiliary aids.**

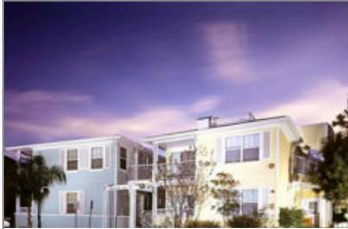


# Thomas Safran & Associates

## (310) 820-4888

### *Properties with Open Waiting Lists*

Age Restricted



**Beacon Hill**  
309 Beacon St  
Avalon, CA  
(310) 510-2471  
Age Restricted: 62+



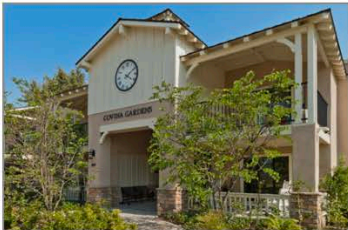
**Brezewood Village**  
16000 East Grayville Drive  
La Mirada, CA  
(562) 943-9555  
Age Restricted: 62+



**Casa Lucerna**  
1025 Kern Avenue  
Los Angeles, CA  
(323) 266-3313  
Age Restricted: 55+



**Corona Villas**  
2680 S. Main Street  
Corona, CA  
(951) 272-1868  
Age Restricted: 62+



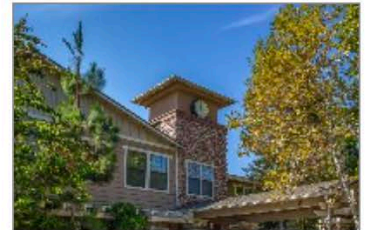
**Covina Gardens**  
200 West Rowland Street  
Covina, CA  
(626) 967-4796  
Age Restricted: 55+



**Gateway**  
720 E. Carson Street  
Carson, CA  
(310) 522-4343  
Age Restricted: 55+



**Gateway at Willowbrook**  
11740 Bandera Street  
Los Angeles, CA  
(323) 566-2081  
Age Restricted: 62+



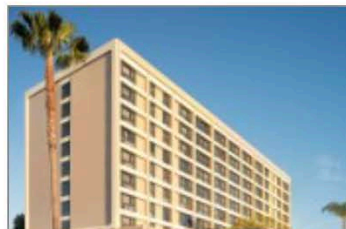
**Goldware Senior Housing**  
6730 Streeter Avenue  
Riverside, CA  
(951) 351-1234  
Age Restricted: 55+



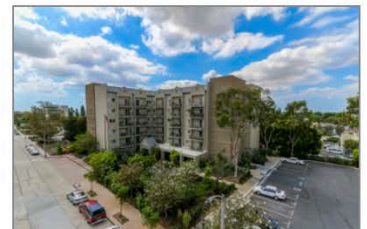
**Lexington Square**  
250 E Lexington Avenue  
El Cajon, CA  
(619) 444-2642  
Age Restricted: 62+



**Town Meadows**  
115 West Murray Avenue  
Visalia, CA  
(559) 627-2220  
Age Restricted: 62+



**Whittier Towers**  
7215 Bright Avenue  
Whittier, CA  
(562) 693-1353  
Age Restricted: 62+



**William Penn Manor**  
7025 Friends Avenue  
Whittier, CA  
(562) 945-1344  
Age Restricted: 62+

## SENIOR HOUSING

	<u>Address</u>	<u>Qty</u>	<u>Zip Code</u>	<u>Phone</u>
Brookdale Alhambra	1 East Commonwealth Ave.	Alhambra	91801	626-551-0895
Plaza on Main	333 West Main Street	Alhambra	91801	626-289-5800
North Lake Villas	2851 N. Lake Ave.	Altadena	91001	626-398-8668
Heritage Park	150 West Las Tunas	Arcadia	91007	626-821-9048
Santa Anita Retirement Center	5600 Gracewood Ave.	Arcadia	91007	626-442-8410
Loving Care Home	735 E. Hanks St.	Arcadia	91702	626-969-2411
Soldano Senior Village	450 N Soldano Ave.	Azusa	91702	626-334-3383
Villa Azusa Senior	200 E Gladstone St.	Azusa	91702	626-969-2711
Kay's Guest House	3748 Grace Ave.	Baldwin Park	91706	626-962-8022
Ramona Park Apartments	13870 Ramona Blvd	Baldwin Park	91706	(626) 338-0224
The Oaks on Florence	4224 Florence Avenue	Bell	90201	(323)-560-1222
Westminster Court	6850 Florence Ave.	Bell Gardens	90201	562-806-2893
Park View Terrace	6728 Clara Street	Bell Gardens	90201	(562) 928-0348
Belmont Place Apartments	9830 Belmont St.	Bellflower	90706	562-804-1458
Camelot Residential Homes	10337 Beach St.	Bellflower	90706	562-866-3955
The Watermark at Beverly Hills	Hills 220 N. Clark Drive	Beverly Hills	90211	424-354-2614
Sunrise of Beverly Hills	201 N. Crescent Drive	Beverly Hills	90210	310-929-5343
Burbank Senior Artist Colony	240 East Verdugo Avenue	Burbank	91502	(818) 955-9391
Bellmont Village Senior Living	455 E Angeleno Ave	Burbank	91501	818-972-2405
Olive Plaza Apartments	450 E Olive Avenue	Burbank	91501	844-699-9121
Atria Las Posas	24 Las Posas Road	Camarillo	93010	805-351-3406
Brookdale Camarillo	6000 Santa Rosa Road	Camarillo	93012	844-348-2214
Golden Horizon	2221 Briarfield Street	Camarillo	93010	805-388-0308
				805-987-6486
Mira Vista Village	2700 East Ponderosa Drive	Camarillo	93010	562-595-7567
Ocean Breeze Estates	1132 Blue Oak Street	Camarillo	93010	805-312-3673
Ponderosa Village	2105 E. Ponderosa Drive	Camarillo	93010	805-987-0260
Vintage Crossing Senior Apartments	6830 Jordan Ave.	Canoga Park	91303	818-596-0921
Avalon Courtyard	22121 S. Avalon Blvd	Carson	90745	310-522-9858
Carson Retirement Center	Center 345 E Carson	Carson	90745	310-830-4010
Carson Terraces Senior Apts.	632 E. 219th Street	Carson	90745	310-835-0969
Villaggio	555 E. Carson St.	Carson	90745	310-847-7737
Carson Gardens Apts.	21811 S. Main St.	Carson	90745	310-518-2790
Bella Vita	402 E Sepulveda Blvd	Carson	90745	714-282-2520
The Gateway at City Center	720 E. Carson St.	Carson	90745	310-522-4343
Claremont Villas Senior Apts.	100 S. Indian Hill Blvd	Claremont	91711	909-625-2424
				562-928-2922
Commerce Senior Citizens Apts.	6725 E. Gage St.	Commerce	90040	310-280-5004
				562-927-7427
Telacu Manor	7100 E. Gage St.	Commerce		323-838-8556
E. Boyd Esters Manor	1101 N. Central Ave.	Compton	90222	310-603-2954
South Bay Retirement Residence	1001 W. Cressey Street	Compton	90222	310-609-0110
St. Timothy's Manor	425 S. Oleander Ave.	Compton	90222	323-979-0863
The Metro Compton Senior Apts.	302 N. Tamarind Ave.	Compton	90222	310-635-4000
Atria	825 W. San Bernardino Road	Covina	91722	626-407-2056
Covina Gardens	200 West Rowland Ave.	Covina	91723	626-967-4796
El Descanso Retirements Homes	21020 East Cienega Avenue	Covina	91724	626-967-2868
Culver City Senior Housing	5166 Sepulveda Blvd.	Culver City	90230	310-390-2357
Palms Court	3995 Overland Avenue	Culver City	90232	310-559-4999
Rotary Plaza	5100 Overland Avenue	Culver City	90230	310-538-9160
Avila Gardens	1171 Encanto Pkwy.	Duarte	91010	626-599-2214
				626-357-5118
Heritage Park	91S Highland Ave.	Duarte	91010	855-300-8819
Huntington Oaks Village	1657 Huntington Drive	Duarte	91010	626-303-4552
Royal Oaks	1763 Royal Oaks Dr. North	Duarte	91010	626-709-5843
Westminster Gardens	1420 Santo Domingo Ave.	Duarte	91010	626-709-5845
Blessed Rock Apartments	4111 Tyler Ave.	El Monte	91731	(626) 448-2688
Casa De Esperanza	12000 Denholm Dr	El Monte	91732	(626) 444-8943
Flamingo Gardens	3711 Cogswell Rd.	El Monte	91732	(626) 443-3285
Pacific Towers Senior	10450 E. Valley Blvd	El Monte	91731	(626) 279-1858

## SENIOR HOUSING

	Address	Qty	Zip Code	Phone
Fillmore Senior Apartments	412 Santa Clara Ave.	Fliimore	90291	(805) 524-4124
Park View Senior Apartments	512 Main Street	Fliimore	93015	(805) 524-4700
Gardena Valley Towers Co-op	1715 W. 158th Street	Gardena	90247	310-217-1320
Broadview Residential Care	535 W. Broadway	Glendale	91204	818-246-4951
Parkview Glendale	426 Piedmont Ave.	Glendale	91206	818-246-7457
Leisure Vale Retirement	413 E. Cypress St.	Glendale	91205	818-244-2323
Windsor	1230 E. Windsor Road	Glendale	91205	747-800-4941
Glendora Gardens	340 N. Wabash Ave.	Glendora	91741	855-956-1586
Mauna Loa Oaks	19041 E. Mauna Loa Ave.	Glendora	91740	626-387-9186
Pilarville Gardens	1259 St. Vladimir St.	Glendora	91741	626-335-5136
St. James Homes	1042 Claraday St.	Glendora	91740	626-335-1995
Michael's Manor	23704 Hynford Pl. #237	Harbor City	90710	626-335-1995
Vista Lee Rosa Apts.	1001 Pacific Coast Hwy	Harbor City	90710	(310) 326-2733
Fonthill Care Gardens	14103 Fonthill Ave.	Hawthorne	90250	310-973-7242
Park Gale Guest Home	4760 W. 123rd St.	Hawthorne	90250	310-978-4676
Telacu Senior Housing	13000 Doty Ave.	Hawthorne	90250	310-675-8288
Belmont Village		Hollywood	90046	323-874-7711
				(323) 962-5811
Arirang Housing	1725 Whitley Ave.	Hollywood	90028	323-871-2116
Castle Argyle Apts.	1919 Argyle Ave.	Hollywood	90068	(323) 465-2082
Hayworth House	361 N Hayworth Ave.	Hollywood	90048	(323) 231-1104
Hollywood Fountain North	6233 Fountain Ave.	Hollywood	90028	(323) 461-9936
Hollywood Fountain South	6222 Fountain Ave.	Hollywood	90028	(323) 461-3758
Hollywood Knickerbocker	1714 N. Ivar Ave.	Hollywood	90028	323-870-9109
Hollywood Plaza Apts.	1637 N. Vine St.	Hollywood	90028	323-469-3211
Kingsley Manor	1055 N. Kingsley Drive	Hollywood	90029	323-661-1128
Melrose Garden	960 N. Martel Avenue	Hollywood	90046	323-928-4366
Casa Bonita Senior Apts.	6512 Rugby Avenue	Huntington Park	90025	323-553-2744
Eucalyptus Park	811 N. Eucalyptus Ave.	Inglewood	90302	310-677-7482
Regency Towers	151 N. Locust St.	Inglewood	90301	310-677-5400
Regent Plaza	201 West Regent St.	Inglewood	90301	310-672-5198
Westchester Villa	220 W. Manchester Blvd	Inglewood	90301	310-673-1093
Alondra Manor Home	15203 Alondra Blvd.	La Mirada	90638	714-228-1098
La Miranda Landmark	13710 Santa Tecla Ave.	La Mirada	90638	562-947-4087
La Miranda Vistas	14129 Adoree St.	La Mirada	90638	562-404-9975
The Palms	13001 La Miranda Blvd.	La Mirada	90638	844-455-7802
Breezewood Village	16000 East Grayville Drive	La Mirada	900638	562-943-9555
Canyon Terrace	2400 San Dimas Canyon Rd	La Verne	-	(909) 592-1255
Candlewood Park	4051 E. Candlewood St.	Lakewood	90712	(562) 531-3135
Arbor Court	44916 N. 10th Street West	Lancaster	93534	661-449-1660
Arbor Gardens	710 W. Kettering	Lancaster	93534	661-723-9015
Arbor Grove	855 W. Jackman Street	Lancaster	93534	661-949-6206
Cedar Creek Senior Apts.	1530 W. Avenue K8	Lancaster	93534	661-729-9998
Cedar Town Square Senior Apts.	44942 Cedar Ave.	Lancaster	93534	661-948-2571
Fernwood Apartments	45151 Fern Ave.	Lancaster	93534	661-948-0051
Lancaster Homes Apartments	711 W. Jackman St.	Lancaster	93534	(626) 262-4510
Max Keller Senior Apts.	44221 Kingtree Ave.	Lancaster	93534	661-940-8485
Mayflower Gardens	6570 W. Avenue L12	Lancaster	93536	661-943-3228
Prestige Assisted Living	43435 30th Street West	Lancaster	93536	661-949-2177
Tiana Rose Villa, LLC	45368 Tiana Rose Street	Lancaster	93536	661-945-2011
Lawndale Senior Housing	4702 W. 153rd Pl.	Lawndale	90260	(310) 644-1102
Lomita Care Center	1955 Lomita Blvd.	Lomita	90717	310-325-1970
Lomita Kiwanis Gardens	25109 Ebony Lane	Lomita	90717	310-325-5301
Covenant Manor	600 E. 4th Street	Long Beach	90802	562-435-1804
				562-444-1677
Del Amo Gardens	225. E. Del Amo Blvd.	Long Beach	90805	800-715-1250
Federation Towers	3801 W. Willow Street	Long Beach	90815	562-426-8404
Hacienda Grande	1740 Grand Ave.	Long Beach	90804	562-597-7753
				562-426-6547
Lone Beach Brethren Manor	3333 Pacific Place	Lone Beach	90806	562-595-7567

## SENIOR HOUSING

	Address	Qty	Zip Code	Phone
Menorah Senior Housing		Long Beach	90806	310-477-1476 562-426-4004
Lutheran Towers	2340 4th St.	Long Beach	90405	562-435-3448
New Hope Home	1150 New York Street	Long Beach	90813	562-591-5681
Park Pacific Tower	714 Pacific Ave.	Long Beach	90806	562-435-1803 562-277-1597
Plymouth West 200	240 Chestnut Ave.	Long Beach	90802	562-432-7958 562-595-7567
Providence Gardens	1011 Pine Ave.	Long Beach	90813	562-432-4454
Scherer Park Apts.	4676 Long Beach Blvd.	Long Beach	90805	562-422-1798
Seamist Towers	1451 Atlantic Blvd.	Long Beach	90805	562-218-0580
St. Mary's Tower	1120 Atlantic Ave.	Long Beach	90813	562-435-0614
Villa Redondo	237 Redondo Ave.	Long Beach	90803	562-434-9932 877-227-3505
Vista del Mar	3360 Magnolia Ave.	Long Beach	90806	562-595-1559
Adams Senior Housing	1925 Adams Blvd.	Los Angeles	90018	323-766-9535 310-477-1476
Afton Place	6230-6231 Afton Place	Los Angeles	90028	(323) 467-4972
Alice Manor	10325 Grandee Ave.	Los Angeles	90059	323-567-6463
Athens Vistas Senior Apartments	1300 W. 105th St.	Los Angeles	90044	323-893-2401
Baldwin Villa Plaza	3939 Marilton Ave.	Los Angeles	-	(323) 298-0400
Broadway Villas Apartments	9501 5 Spring Street	Los Angeles	90037	323-418-1800
Broadwood Terrace Apartments	5005 S. Main St.	Los Angeles	90037	877-937-4743 323-235-5280
Carondelet Senior Apts.	512 S. Carondelet Street	Los Angeles	90057	213-487-7298 310-204-2050
Casa de las Hermanitas	2801 E. 2nd Street	Los Angeles	90033	323-262-1709
Casa De Woods	1951 W 22nd St.	Los Angeles	90230	866-940-8905
Casa Development	1151 S New Hampshire St.	Los Angeles	90230	877-920-3960 213-251-5987
Casa Longwood	2535 Longwood Ave	Los Angeles	90016	(323) 734-1477 323-292-0074
Casa Lucerna	1025 Kern Avenue	Los Angeles	90022	323-266-3313
Casa Serena Apartments	5017 Axtell Street	Los Angeles	90032	323-441-0656 626-859-3004
Cathay Manor	600 N. Broadway	Los Angeles	90012	213-626-1190
Castle Argyle Apartments	1919 N. Argyle Ave.	Los Angeles	90068	323-465-2082
Columbia Apartments	1043 Kingsley Drive	Los Angeles	90230	866-355-9435
Grand Plaza Senior Apts.	601 N. Grand Ave	Los Angeles	90012	213-680-9163
Dunbar Village	4225 South Central Ave.	Los Angeles	90011	323-238-7501
Echo Park Senior Housing	1727 Morton Avenue	Los Angeles	90026	310-475-6083 213-250-5310
Ellendale Arms	2711 Ellendale Pl.	Los Angeles	90007	(323) 3911021
Crescent Arms	1709 W. 8th Street	Los Angeles	90044	213-483-2767
E. Victor Villa	555 W. 92nd Street	Los Angeles	90044	323-757-1940
Fairfax Senior Citizens Apartments	737 S. Genesee Ave.	Los Angeles	90036	(323) 456-2500
Fairfax Towers	1200 N. Fairfax Ave.	Los Angeles	90046	323-650-1271 310-204-2050 800-299-2963
Fairmont Terrace	822 N. Hazard Ave.	Los Angeles	90063	(323) 268-8474
Fame Arms	2420 S Western Avenue	Los Angeles	90230	323-870-8745
Freeman Villa	1229 S. Westmoreland Ave.	Los Angeles	90006	(213) 383-7945
Fuller Avenue Housing	1627 N. Fuller Avenue	Los Angeles	90046	323-876-9634 310-477-1476 310-870-8745
Galaxy Apartments	835 West Rosecrans Avenue	Los Angeles	90247	310-538-9160
George McDonald Court Apts.	1800 E. 92nd Street	Los Angeles	90002	323-566-8608
Good Shepard Manor	4411 S. 11th Ave.	Los Angeles	90043	323-299-5735
Gramercy Place Apts	1819 S Gramercy Place	Los Angeles	90230	877-345-1705
Grand Plaza Senior Apartments	601 N Grand Ave.,	Los Angeles	90012	213-680-9163



## SENIOR HOUSING

	Address	Qty	Zip Code	Phone
Hale Morris Lewis Apartments	1307 West 105th St.	Los Angeles	90044	323-755-1776
Hancock Gardens Apts	303 S. Van Ness Ave.	Los Angeles	90020	323-938-6646
Harvard Gardens	1938 S Harvard Blvd	Los Angeles	90230	877-282-5094
Hollywoodlands I	1438 Gordon Street	Los Angeles	90038	323-465-8957
Hollywoodlands II	5169 Marathon Street	Los Angeles	90038	323-465-8957
Hollywoodlands III	977 N Wilton Place	Los Angeles	90038	323-465-8957
Hoover Seniors	6206-6224 S. Hoover	Los Angeles	90044	323-541-0391
Jessie L. Terry Manor	3100 S. Vermont Ave.	Los Angeles	90007	323-734-1664
Jewel Terraces	1420 W 27th St.	Los Angeles	90230	866-333-6554
Kenwood Terrace	337 N. Mednick Ave.	Los Angeles	90022	323-263-9707
LA Pro XXXII Apartments	1348 W. Ingraham St.	Los Angeles	90017	(323) 213-4174
LA Posada	151 N Sunol Drive	Los Angeles	90063	323-266-8150
la Salle Fl Apartments	2011 la Salle Avenue	Los Angeles	90230	877-282-5094
Laguna Senior Apartments	4201 W. Sunset Blvd.	Los Angeles	90029	323-664-4300
Las Palmas	1778 N. Las Palmas Avenue	Los Angeles	90028	(213) 485-7535
Las Palomas Apartments	3025 Gleason Ave.	Los Angeles	90063	(626) 859-3004 323-780-4218
Los Angeles Gardens	2624 S Harvard Blvd.	Los Angeles	90230	877-644-2965
MacArthur Park Towers	450 Grand View Street	Los Angeles	90057	213-382-8395
Madison Ave. Senior Housing	1151 Madison Ave.	Los Angeles	90029	323-906-0249 310-477-1476
Main Street New Hope Courtyard	109 W. 56th St.	Los Angeles	90037	323-232-5483 213-483-2488
Manila Terrace	2328 W. Temple Street	Los Angeles	90026	800-545-1833 ext. <b>478</b>
Manhattan Gardens	1424 S Manhattan Place	Los Angeles	90230	877-345-1705 213-787-2700
Mariposa Manor	756-757 S. Mariposa Ave.	Los Angeles	90005	213-385-0340 805-495-7999 ext. 427
Masselin Senior Housing	404 Cochran Ave	Los Angeles	-	(323) 549-0328
Menorah Terrace	1123 N. Fuller Ave.	Los Angeles	90046	310-477-1476 323-850-1225
Menlo Gardens	1816 Menlo Avenue	Los Angeles	90230	877-920-3960
Mid-Town Apartments	3030 San Marino Avenue	Los Angeles	90230	<b>888-848-5723</b>
Mid-Wilshire Apts.	2826 la Salle Avenue	Los Angeles	90230	866-940-8905 310-477-1476
Miracle Mile Senior Housing	404 S. Cochran Avenue	Los Angeles	90036	323-549-0328
Morgan Place Apartments	7301 S. Crenshaw Blvd.	Los Angeles	90043	323-905-1290
Mount Zion Towers	4827 S. Central Ave.	Los Angeles	90011	323-231-9361
Mt. Moriah Senior Villa	476 W. 43rd Street	Los Angeles	90037	323-231-9361 213-272-8936 310-204-2050
New Hampshire Arms	819 S. New Hampshire Ave.	Los Angeles	90005	213-389-9332
New Hope Senior Villa	5140 S. Central Ave.	Los Angeles	-	213-231-1104
Normandie Villas	2633 S Normandie Avenue	Los Angeles	90230	866-355-9435
One Venice	1 N Venice Blvd.	Los Angeles	90291	310-821-9332
Oxford Park	1920 S. Oxford Street	Los Angeles	90018	323-731-7661
Parkview on the Park Apartments	626 South Alvarado St.,	Los Angeles	90057	213-989-0750
Pico Union Villa	1200 S. Union Ave.	Los Angeles	90015	213-738-7827
Pico-Veteran Senior Housing	10961 W. Pico Blvd.	Los Angeles	90064	310-477-1476 310-312-6096
Pico Wooster Senior Citizens	1425 S. Wooster Street	Los Angeles	90035	310-477-1476 310-271-5934
Progressive Home	7010 S. Denver Ave.	Los Angeles	90044	323-753-3427
Pilgrim Tower	1207 S Vermont Avenue	Los Angeles	90230	877-345-1711
Rittenhouse Square	1100 E. 33rd Street	Los Angeles	90011	323-432-0890
San Lucas	1221 West 7th Street	Los Angeles	90017	213-623-2010
Sharp Manor	10601 South Broadway	Los Angeles	90003	323-779-3004
St. Andrews Terrace	1525 S. St. Andrews Place	Los Angeles	90230	877-644-2965
St. James Manor	615 S. Gramercy Place	Los Angeles	90005	213-382-5391

## SENIOR HOUSING

	Address	Qty	Zip Code	Phone
St. Nicholas Cedars Manor	2323 W. 4th Street	Los Angeles	90057	213-388-8083
Stevenson Manor	1230 Cole Ave.	Los Angeles	90038	(818) 789-5550
Stovall Terrace Apartments	4075 S. Figueroa Street	Los Angeles	90037	323-235-6250
Sunset-Normandie Towers	1428 N. Normandie Ave	Los Angeles	90027	323-663-0423
Swansea Park Apartments	1015 N. Kingsley Drive	Los Angeles	90029	323-666-4313
Van Nuys Apartments	210 W. 7th Street	Los Angeles	90014	213-627-5286
Van Buren Apartmeents	2723 Van Buren Pl	Los Angeles	90230	877-920-3960
Vendome Courts	135 S. Reno Street	Los Angeles	90057	323-231-4174
Villa de la Esperanza	1401 S. Hope Street	Los Angeles	90015	213-749-4327
Villa St. Andrews	1840 S St. Andrews	Los Angeles	90230	877-345-1711
Wadsworth Place	911 E. 120th Street	Los Angeles	90059	323-567-2345
Watts Arms I	1720 E. Century Blvd.	Los Angeles	90002	323-569-2809
Ward Villas	1177 W Adams Blvd	Los Angeles	90007	213-747-1188
Wills Manor	1510 W. 27th Street	Los Angeles	90230	866-940-8905
Willowbrook Villa	4341 Willowbrook Ave.	Los Angeles	90029	323-521-5812
Wilshire Towers	616 S. Normandie Ave	Los Angeles	90005	213-381-6439
Wilton Wilshire Arms	3966 Wilshire Blvd	Los Angeles	90010	213-487-7269
Preservation V	833 S. Carondelet St.	Los Angeles	90057	(310) 374-4381
Silvercrest	5940 Carlos Ave.	Los Angeles	90028	(562) 491-8767
Tres Lomas Gardens	4343-49 Toland Way	Los Angeles	90041	323-255-4947
Villa Marisol	5301 Via Marisol	Los Angeles	90042	626-745-2826
Redwood Village	13150 Maxella Avenue	Marina Del Rey	90292	(310) 306-6488
Maywood Manor Cooperative	4650 Slauson Ave.	Maywood	90270	(323) 773-5175
Wilson Apartments	105 E. Olive Ave.	Monrovia	91016	626-348-0022
Montebello Downtown Plaza	815 West Cleveland Ave.	Montebello	90640	323-888-9759
Montebello Senior Villas	205 West Whittier Blvd	Montebello	90640	<b>323-724-6888</b>
Via Campo Senior Villas	2201 Via Campo	Montebello	90640	323-888-1194
Golden Age Village	234 N. Rural Drive	Monterey Park	91755	626-571-1807
Monterey Park Senior Village	1935 Potrero Grande Drive	Monterey Park	91755	626-573-1684
Vintage Crest Senior Apartments	4700 Park Ln.	Moorpark	93021	(805) 531-1057
Columbus Square	8561 Columbus Ave.	North Hills	91343	(310) 802-6670
Plummer Village	15450 Plummer St.	North Hills	91343	(818) 891-0646
St. Nicholas Housing Development	10220 Aqueduct Ave	North Hills	91343	(818) 894-0084
Golden Years Senior Housing	11330 Otsego St.	North Hollywood	91601	818-762-6001
North Hollywood Senior Citizens Housing	11035 Magnolia Blvd.	North Hollywood	91601	800-500-7725
Northridge Park Manor	9628 Reseda Blvd.	North Hollywood	91324	(818) 993-9236
Plummer Park Apartments	17051 Plummer St.	North Hollywood	91325	(818) 701-9554
				310-477-1476
Parthenia St. Senior Housing	19455 Parthenia Street	North Hollywood	91324	818-700-8073
Norwalk Christian Towers	14141 Clarkdale Ave.	Norwalk	90650	(562) 868-6241
Camino Del Sol Apartments	1910 Camino Del Sol	Oxnard	93030	805-278-7744
Casa Merced	840 W. 5th Street	Oxnard	93030	805-483-7122
Press Courier Senior Lofts	300 W. 9th St.	Oxnard	93030	805-754-2805
Heritage Park Apartments	820 South E. St.	Oxnard	93030	805-483-7322
Sycamore Senior Village	333 NF St.	Oxnard	93030	844-543-0983
Casa Merced Apartments	840 W. 5th St.	Oxnard	93030	805-483-7122
Pledgreville Senior Citizens Villa	11060 Norris Ave.	Pacoima	91331	(818) 897-7784
				661-272-4576; 661-947-4705
Cielo Azul Apartments or Impressions Apartr	38040 27th Street E	Palmdale	93550	
Palmdale Gardens Apartments	3860110th St. E	Palmdale	93550	(661) 273-1874
Palo Verde Terrace	38235 10th Street E	Palmdale	93550	661-274-9726
Rancho Village	39630 Fairway Drive	Palmdale	93551	844-500-0671
Whispering Palms	38250 9th Street East	Palmdale	93551	661-267-0752
Ridgeview Manor Apartments	14620 Gledhill St.	Panorama City	91402	818-893-0622
Community Arms	169 E. Orange Grove Blvd	Pasadena	91103	626-796-8196
The Concord	275 E. Cordova Street	Pasadena	91101	626-792-1032
				626-388-1505
Heritage Square	762 N. Fair Oaks Ave.	Pasadena	91103	213-787-2748
la Pintoresca	1275 la Pintoresca Dr.	Pasadena	91103	626-797-1794
Green Hotel Apartments	50 East Green Street	Pasadena	91101	626-793-7070

## SENIOR HOUSING

	Address	Qty	Zip Code	Phone
Rosewood Court	1800 N. Fair Oaks Ave.	Pasadena	91103	626-398-6470
Pasadena Highlands	1575 E. Washington Blvd.	Pasadena	91104	626-768-7764
Pilgrim Tower North	560 E. Villa Street	Pasadena	91101	626-577-0330
Pico Rivera Gardens	6525 Rosemead Blvd.	Pico Rivera	90660	562-949-8489
Verner Villa	9220 Verner Street	Pico Rivera	90660	562-948-1852
The Woods at Playa Vista	12481 W. Fielding Circle	Playa Vista	90049	310-949-9222 424-835-4135
Emerson Village	755 Palomares	Pomona	91766	909-623-1421
Serenity Villas	158 E. Bonita Ave.	Pomona	91767	909-596-2900
Casa Pacifica	703 N. Ventura Roa	Port Hueneme	93041	805-986-2100
Casa de las Amigos	123 S. Catalina Ave.	Redondo Beach	90277	310-376-3457
Heritage Pointe	1801 Aviation Way	Redondo Beach	90278	310-318-8418
Seaside Villa	319 N. Broadway	Redondo Beach	90277	310-376-9363
Menorah Home	19206 Sherman Way	Reseda	91335	310-477-1476 818-708-0407
Reseda East	18450 Ingamar St.	Reseda	91335	(818) 342-7176
Reseda Manor	7725 Reseda Blvd	Reseda	91335	818-342-7191
California Mission Inn	4825 Earle Ave	Rosemead	91770	(626) 287-0438
Atria Rancho Park	801 Cypress Way	San Dimas	91773	626-275-4376
San Dimas Retirement	834 W. Arrow Highway	San Dimas	91773	909-599-8441
Sunnyside Senior Apartments	251 S. Walnut Ave.	San Dimas	91773	909-599-2121
Monte Vista Place	105 N. Monte Vista Ave.	San Dimas	91773	909-599-2939
Park San Dimas	265 W. Foothill Blvd.	San Dimas	91773	909-394-0333
Charter Oak Mobile Home Estates	801 W. Covina Blvd.	San Dimas	91773	909-599-2939
Cienega Valley Estates	1245 W. Cienega Ave.	San Dimas	91773	909-599-4518
Lone Hill Manor	1205 W. Cypress Ave.	San Dimas	91773	909-592-3831
Mobileland	1635 W. Covina Blvd.	San Dimas	91773	626-331-5456
San Dimas Royal	1630 W. Covina Blvd.	San Dimas	91773	626-332-2407
Casa Bonita Convalescent	535 E. Bonita Ave.	San Dimas	91773	909-599-1248
Canterbury Village	23420 Avenida Rotella	Santa Clarita - Valencia	91355	(661) 255-9797
Silvercreek	12015 Lakelands Rd.	Santa Fe Springs	90670	(562) 946-7717
Costa Azul	10829 Fulton Wells Ave.	Santa Fe Springs	90670	(562) 944-4999
Barnard Park Villas	3356 Barnard Way	Santa Monica	90405	310-399-7023
Brookdale Santa Monica	2107 Ocean Ave.	Santa Monica	90405	310-573-8697
Fourth Street Senior Housing	1116-1146 4th Street	Santa Monica	90403	310-477-1476 310-917-5004
Brookdale Santa Monica Gardens	851 2nd Street	Santa Monica	90403	844-880-3432
Lincoln Court Apts.	2807 Lincoln Blvd.	Santa Monica	90405	310-314-8269
Ocean Breeze	1458 14th Street	Santa Monica	90404	424-268-4176
Santa Monica Christian Towers	1233 6th Street	Santa Monica	90403	310-394-3017
Upward Bound Senior Villas	101111th Street	Santa Monica	90403	310-458-7779
Westminster Towers	1112 7th St.	Santa Monica	90403	323-258-3512
Wilshire House	1125 3rd St.	Santa Monica	90401	(310) 395-4545
Columbus Terrace Apartments	8606 Columbus Ave	Santa Monica	91343	(818) 893-8387
Dickens Senior Apartments	14559 Dickens St.	Sherman Oaks	91403	(818) 986-9515
Nobile Senior Housing	15100 Moorpark	Sherman Oaks	91403	310-477-1476
Sherman Oaks Senior Housing	14567 Dickens Street	Sherman Oaks	91403	310-477-1476
Sherman Arms Apartments	17760 Sherman Way	Sherman Way	91335	818-946-0471
Villa Valley Apartments	15950 Sherman Way	Sherman Ways	91406	(818) 781-7285
VPH Adult Retirement Center	15211 Sherman Way	Sherman Ways	91405	(818) 781-7285
Sherman Way Senior Housing	15864 Sherman Way	Sherman Ways	91406	310-477-1476 818-785-9765
West Valley Towers	14650 Sherman Way	Sherman Ways	91406	(818) 994-0965
Woodman Manor Apartments	6712 Woodman Ave.	Sherman Ways	91401	(310) 377-7789
Fickett Towers	14081 Sherman Way	Sherman Ways - Van Nuys	91405	<b>(818) 988-8628</b>
Harmony Terrace	941 Sunset Garden Ln.	Simi Valley	93065	(805) 522-7766
Heywood Gardens	1770 Heywood St.	Simi Valley	93065	(805) 583-8464
Las Serenas	2090 Yosemite Ave.	Simi Valley	93063	(805) 520-9542

## SENIOR HOUSING

	Address	Qty	Zip Code	Phone
Seasons	1662 Rory Ln.	Simi Valley	93063	(805) 522-7778
Patricia Village	1561 Patricia Ave.	Simi Valley	93065	(805) 583-3639
Sorrento Villas	415 Country Club Dr.	Simi Valley	93065	(805) 527-7838
Vintage Paseo	2970 Tapo Canyon Rd.	Simi Valley	93063	(805) 578-2311
Westgate	1850 Williams St. #100	Simi Valley	93065	(805) 526-9302
Pennsylvania Square	3170 Southern Ave.	South Gate	90280	323-566-5082
Burns Manor	8155 Foothill Blvd.	Sunland	91040	(818) 352-8715
Silvercrest	11840 Foothill Blvd.	Sylmar	91342	(562) 491-8767
Valley Pride Village	13200 Bromont Ave.	Sylmar	91342	818-362-2616
Atria Thousand Oaks	405 Hodencamp Road	Thousand Oaks	91360	805-273-5042
Conejo Future Apartments	130 Brazil St.	Thousand Oaks	91360	(310) 203-9199
Glenn Oaks Senior Apartments	145 E Wilbur Rd.	Thousand Oaks	91360	(805) 494-3120
Oak Creek Senior Village	367 E Thousand Oaks Blvd	Thousand Oaks	91360	805-273-5042
Ocean Terrace	3851 226th Street	Torrance	90505	310-373-0903
Coleman Court	1421 Cravens Avenue	Torrance	90501	310-212-5898
Golden West Tower	3510 W. Maricopa Street	Torrance	90503	310-371-4801
JCI Gardens	2000 W. 162nd Street	Torrance	90504	310-515-3642
Ocean Terrace	3851 226th Street	Torrance	90505	310-373-0903
Foothill Gardens	7687 Foothill Blvd.	Tujunga	91042	(818) 352-1307
Tujunga Gardens	6643 Foothill Blvd.	Tujunga	91042	(818) 352-1307
Valencia Villa Apartments	25857 Singing Hills Dr.	Valencia	91355	(310) 204-2050
Sherman Way Senior Housing	15864 Sherman Way	Van Nuys	91406	(818) 785-9765
Adda & Paul Safran Senior Housing	151 Ocean Front Walk	Venice	90291	(310) 450-9545
One Venice	One N Venice Blvd.	Venice	90291	(310) 821-9332
Cypress Place Senior Living	1220 Cypress Point Lane	Ventura	93003	
Silvercrest Ventura	750 Petit Ave.	Ventura	93004	805-647-0110
Lark Ellen Village	1350 E San Bernardino Road	West Covina	91790	626-732-3939
Olive Tree Terrace	721 N Azusa Ave.	West Covina	91791	626-967-1656
Vintage Gardens	1950 E. Badillo Street	West Covina	91791	626-967-5631
Heritage Park Senior Apartments	1800 W. Badillo Street	West Covina	91790	626-813-0233
West Covina Senior Villas	1842 Workman Avenue	West Covina	91791	626-331-0208
West Covina Senior Villas II	1838 Workman Ave.	West Covina	91791	626-331-7100
Movietown Square	7302 Santa Monica Blvd.	West Hollywood	90046	323-356-3330
Affordable Living for the Agin	937 N. Fairfax Avenue	West Hollywood	90046	323-650-7988
Kings Road Apartments	800 Kings Road	West Hollywood	90069	323-653-3090
				310-850-1225
Menorah Terrace	1123 N. Fuller Ave.	West Hollywood	90046	310-477-1476
Brookdale Central Whittier	8101 Painter Ave.	Whittier	90602	844-662-0993
Emeritus at Chateau Whittier	13250 E. Philadelphia Street	Whittier	90601	844-344-4049
Leffingwell Manor	11410 Santa Gertrudes Ave.	Whittier	90604	562-947-1334
Whittier Lutheran Towers	7215 Bright Ave.	Whittier	90602	562-693-1353
Whittier Place Senior Living	12315 Burgess Avenue	Whittier	90604	562-777-1477
William Penn Manor	7025 Friends	Whittier	90602	562-945-1344
Hoover Hotel	7035 Greenleaf	Whittier	90602	562-696-1848
Whispering Fountains	12251 Washington	Whittier	90606	562-698-6576
Lazy Spokes Trailer Park	109311st. Ave	Whittier	90603	562-947-1314
Don Senior Apartments	105 East I Street	Wilmington	90744	310-549-3338
Wilmington Gardens	1311 W. Anaheim Street	Wilmington	90744	310-835-6366
Owensmouth Gardens	6300 Owensmouth Ave.	Woodland Hills	91367	(818) 715-1750
TELACU	refer to pdf			

**RESOURCE: Helping Hands Senior Foundation 818-269-6580 can help place seniors in affordable housing as well as connect seniors to community resources.**

**LIVING OPTIONS GUIDE:**

Independent Living: \$550- 1,300 per month for shared room; \$1,000-2,300 per month for private room. Typical placement takes 2-4 weeks.

Assisted Living: SSI rate and up for shared room; \$1,800-2,500 per month for private room. Typical placement takes 2-4 weeks.

Skilled Nursing Facility: Placement covered by insurance and social security with no out of pocket cost per month. Shared room only. Placement within 1-4 weeks.



## VETERAN HOUSING

Property	Address	City	Zip Code	Phone	
Plaza on Main	333 West Main Street	Alhambra	91801	626-289-5800	Senior Veterans Only
Altadena Vista Senior Apartments	815 E. Calaveras St.	Altadena	91001	323-564-0237	Senior Veterans Only
Villa Azusa Senior Apartments	200 E. Gladstone St.	Azusa	91702	626-969-2711	Senior Veterans Only
Soldano Senior Village	450 N Soldano Ave.	Azusa	91702	626-334-3383	Senior Veterans Only
Coco Capri Apartments	4001 Coco Ave.	Baldwin Hills	90008	310-450-8785	Veteran
The Oaks on Florence	4224 Florence Avenue	Bell	90201	(323)-560-1222	Senior Veterans Only
Terra Bella	5720 Clara St.	Bell Gardens	90201	562-927-3900	Senior Veterans Only
Park View Terrace	6728 Clara St.	Bell Gardens	90201	562-928-0348	Senior Veterans Only
Artesia Blvd. Apartments	8808 Artesia Blvd.	Bellflower	90706	562-637-6191	Veteran
Canyon Creek	4803 B Canon Ave.	Bellflower	91302	310-820-4888 8182258298	Senior Veterans Only
Bellflower Terrace Senior Apartments	16322 Bellflower Blvd.	Bellflower	90706	(562) 866-8866	Senior Veterans Only
Saticoy Street Apartments	21618 Saticoy St.	Canoga Park	91303-91304	818-887-6920	Veteran
Hart Village Apartments	6941 Owensmouth Ave.	Canoga Park	91303-91304	818-704-5983	Veteran
Tierra del Sol Apartments	7500 Alabama Ave.	Canoga Park	91303-91304	818-887-6920	Veteran
Vintage Crossing Senior Apartments	6830 Jordan Ave.	Canoga Park	91303	818-596-0921	Senior Veterans Only
Las Casitas	21513 Valerio St.	Canoga Park	91303-91304	818-887-6920	Senior Veterans Only
Camino Village Senior Apartments	21735 S. Main St.	Carson	90745	310-835-1899	Senior Veterans Only
Castaic Lake Senior Village	31990 Castaic Rd.	Castaic	91384	661-295-9599	Senior Veterans Only
My Serenity Villa	20615 Mayall St.	Chatsworth	91311	323-327-8554	Veteran
Claremont Villas Senior Apartments	100 S. Indian Hill Blvd.	Claremont	91711	909-625-2424	Senior Veterans Only
Clela Apartments	1243 S. Clela Avenue	Commerce	90022	323-503-9534	Veteran
Douglas Park Apartments	1108 N. Culver Ave.	Compton	90220-90222	310-603-1944	Veteran
Santa Fe Apartments	1912 N. Santa Fe Ave.	Compton	90220-90222	323-231-1107	Veteran
Mosaic Gardens at Willowbrook	2213 E. B Segundo Blvd.	Compton	90220-90222	213-787-2701	Veteran
	12612 S. Wilmington Ave.	Compton	90220-90222	310-635-1557	Veteran
Jones Properties	219 E. Alondra Blvd.	Compton	90220-90222	310-962-0599	Senior Veterans Only 55+
The Metro@ Compton Senior Apartments	302 N. Tamarind Ave.	Compton	90220-90222	424-345-2106	Senior Veterans Only
Ramona Estates	1935 E. 122nd St.	Compton	90220-90222	310-604-0392	Senior Veterans Only
Covina Gardens	200 W. Rowland St.	Covina	91723	626-967-4768	Senior Veterans Only
Elizabeth Court	5225 Elizabeth Pl.	Cudahy	90201	323-562-2708	Veteran
Clara Park Commons for Seniors	4805 Clara St.	Cudahy	902021	323-560-7628	Veteran
Sunshine Apartments	8780 Stamps Rd.	Downey	90241	562-343-5961	Veteran
Adco Apartments	11528 Adco Ave.	Downey	90241	562-595-6111	Veteran
Terrace Regency	11410 Dolan Ave.	Downey	90241	714-717-3357	Senior Veterans Only
Heritage Park Senior Apartments	915 Highland Ave.	Duarte	91010	626-357-5118	Senior Veterans Only
Rockview Apartments	1139 Colorado Blvd.	Eagle Rock	90041	323-258-5320	Senior Veterans Only
B Monte Veterans Village Apartments - OPENN WAIT LIST	11240 Ramona Blvd.	B Monte	91731-91733	626-377-9901	Veterans with Discharge Status of Honorable or Other- than-Honorable and eligible to receive VA Health Benefits; Chronically Homeless; Referrals only
Baldwin Rose Veterans Apartments - OPEN WAIT LIST	9953 Rose Ave.	B Monte	91731-91733	(626) 600-4206	Veterans; Families with Veteran as Head of Household
Tyler Court Senior Apartments	3348 Tyler Ave.	B Monte	91731-91733	626-444-4960	Senior Veterans Only
Palo Verde Apartments	4704 Peck Rd.	B Monte	91731-91733	888-227-8501	Senior Veterans Only
Balboa Grande Apartments	10620 Balboa Blvd.	Granada Hills	91344	818-831-1432	Veteran
Glenmary	4733 N. Figueroa St.	Highland Park	90042	323-258-5320	Senior Veterans Only
Chateau Carlton Apartments	6040 Carlton Way	Hollywood	90028	310-556-1543	Veteran
Met West	5837 W. Sunset Blvd.	Hollywood	90028	323-295-2000 Ext. 16110	Veteran
Selma Community Housing	1605 N. Cherokee Ave.	Hollywood	90028	323-499-1727	Veteran
Eastown Apartments	6201 Hollywood Blvd.	Hollywood	90028	323-960-2500	Veteran
Kenmore Apartments	1726 N. Kenmore Ave.	Hollywood	90028	323-664-4986	Veteran
Mosaic Gardens at Huntington Park	6337 Middleton St.	Huntington Park	90255	323-588-1832	Veteran
Casa Bonita Senior Apartments	6512 Rugby Ave.	Huntington Park	90255	323-581-1600	Senior Veterans Only
Seville Gardens Apartments	2701 Randolph St.	Huntington Park	90255	310-533-5000	Senior Veterans Only
Westside Residences for Veterans	725 S. Hindry Ave	Inglewood	90301-90305	310-496-8132	Veteran
Sunny Gardens Seniors Apartments	13712 E. Sunkist Dr.	La Puente	91744-91746	626-960-1219	Senior Veterans Only
La Puente Gardens Senior Apartments	17341 Hurley St.	La Puente	91744-91746	626-964-6040	Senior Veterans Only
Lake Balboa	6525 Woodley Ave.	Lake Balboa	91406	310-466-0131	Veteran
Amanda Regency Apartments	6805 Louise Ave.	Lake Balboa	91406	818-345-8800	Veteran
Lakeview Terrace Silvercrest	11850 Foothill Blvd.	Lake View Terrace	91342	818-896-7580	Senior Veterans/ Hearing accessible unit - waitlist open
Seasons I Senior Apartments	21309 Bloomfield Ave.	Lakewood	90715	562-809-3456	Senior Veterans Only
Kensington Campus I	45244 32nd St. W.	Lancaster	93534	323-334-9000	Veteran
Arbor Fields Apartments	530 W. Jackman St.	Lancaster	93534	661-942-0026	Veteran
Ima2ine Villa2e	43517 Sahuayo St.	Lancaster	93534	213-225-2728	Veteran

## VETERAN HOUSING

Property	Address	City	Zip Code	Phone	
Cedar Ridge	2105 E. Avenue	Lancaster	93534	661-723-7538	Veteran
Arbor Court	44916 N. 10th St. W.	Lancaster	93534	661-449-1660	Senior Veterans Only
Arbor Grove Senior Apartments	855 W. Jackman St.	Lancaster	93534	661-949-6206	Senior Veterans Only
Arbor Gardens	710 W. Kettering St.	Lancaster	93534	661-723-9015	Senior Veterans Only
Aurora Village II Senior Community	43945 12th St. W.	Lancaster	93534	661-948-0860	Senior Veterans Only
Belmont Shores	5465 E. 2nd. St.	Long Beach	90803-90813	310-872-8686	Veteran
Cabrillo Plaza (Casa de Cabrillo)	2001 River Ave.	Long Beach	90803-90813	562-388-8107	Veteran
City View	3333 Pacific Pl.	Long Beach	90803-90813	562-426-6547	Senior Veterans Only
Elm Terrace Apartments	1100 Elm Ave.	Long Beach	90803-90813	562-491-0088	Senior Veterans Only
The Cleo Apartments	345 S. Alexandria Ave.	Los Angeles	90012-91303	213-389-1050	Veteran
Hillside Villa Apartments	636 N. Hill Pl.	Los Angeles	90012-91303	213-952-9999	Veteran
LA Plaza Village	555 N. Spring St.	Los Angeles	90012-91303	213-810-1198	Veteran
Cochran City Lights	1315 S. Cochran Ave.	Los Angeles	90012-91303	323-936-6497	Veteran
Silver Star Apartments	6570 West Blvd.	Los Angeles	90012-91303	213-817-7357	Veteran
Alessio Apartments	5700 W. Centinela Ave	Los Angeles	90012-91303	833-569-2528	Veteran
Lofts at Noho Commons	11136 Chandler Blvd.	Los Angeles	90012-91303	818-827-3100	Veteran
Florence Morehouse Apartments	11750 W. Martin Luther King Jr. B	Los Angeles	90012-91303	323-531-2667	Veteran
DTLA California Castle	1980 Estrella Ave.	Los Angeles	90012-91303	323-472-1197	Shared room
Minnie's Shell	1341 W. 53rd St.	Los Angeles	90012-91303	310-704-8705	Shared housing for single women / Shared bedroom/ 2 beds per room
Gower Street Apartments	1140 N. Gower St.	Los Angeles	90012-91303	323-467-3449	Homeless Veteran/ Special needs housing
Wilson Apartments	105 E. Olive Ave.	Monrovia	91016	626-398-0022	Senior Veterans Only
Pacific Housing Development	322 E. Newmark Ave.	Monterey Park	91755	323-838-8556	Veteran
Orion Gardens	8955 N. Orion Ave.	North Hills	91343	<b>818-892-2481</b>	Veteran
Casa Familiar de Nordhoff	15543 Nordhoff St.	North Hills	91343	818-892-6220	Veteran
Colony Cove IV HOA	8505 Columbus Ave.	North Hills	91343	805-587-1572	Veteran
Apple Tree Village Apartments	9229 N. Sepulveda Blvd.	North Hills	91343	818-920-9960	Veteran
Valley View Apartments	9015 Orion Ave.	North Hills	91343	818-894-5771	Veteran
Columbus Square Apartments	8561 Columbus Ave.	North Hills	91343	<b>818-891-9898</b>	Veteran
Huston Court	11120 Huston St.	North Hollywood	91601-91606	818-350-1600	Veteran
Laurel Courtyard	7651 Laurel Canyon Ave.	North Hollywood	91601-91606	818-901-6019	Veteran
The Ivy at NOHO	11011 Otsego St.	North Hollywood	91601-91606	818-860-4111	Veteran
Aura NoHo	11430 Burbank Blvd.	North Hollywood	91601-91606	818-350-1600 Ext. 605	Veteran
nVe NoHo	11405 Chandler Blvd.	North Hollywood	91601-91606	818-505-8070	Veteran
Living at Noho	11049 W. McCormick	North Hollywood	91601-91606	818-508-6565	Veteran
Denny Place Apartments	5620 Denny Ave.	North Hollywood	91601-91606	818-985-8768	Veteran
Willow Wood Apartments	5104 Denny Ave.	North Hollywood	91601-91606	818-985-8768	Veteran
BlixVillas	10900 Blix St.	North Hollywood	91601-91606	213-407-3772	Veteran
Pravada East	7526 Simpson Ave.	North Hollywood	91601-91606	909-278-0475	Veteran
Coldwater Apartments	6333 Coldwater Canyon	North Hollywood	91601-91606	818-985-5274	Veteran
Hamlin Estates Apartments	11735 Hamlin St.	North Hollywood	91601-91606	818-985-8768	Veteran
Simpson Saticoy Apartments	7541 Simpson Ave.	North Hollywood	91601-91606	818-765-3182	Senior Veterans Only
Sophia Ridge Apartments	9016 Reseda Blvd.	North ridge	91324	818-773-9444	Veteran
Moonlight Villas	12381 Osborne St.	Pacoima	91331		Veteran
Osborne Gardens Apartments	12360 Osborne St.	Pacoima	91331	818-899-0755	Veteran
Palmdale Garden Apartments	3860110th St. E	Palmdale	93550	661-273-1874	Senior Veterans Only
Asturias Senior Apartments	9628 Van Nuys Blvd.	Panorama City	91402	818-830-5100	Senior Veterans Only
Cantabria Senior Apartments	9640 Van Nuys Blvd.	Panorama City	91402	818-891-7200	Senior Veterans Only
Regency 50 Apartments	14540 Blythe St.	Panorama City	91402	818-988-9515	Senior Veterans Only
Parthenia II Apartments	14920 Parthenia St.	Panorama City	91402	818-891-8813	Senior Veterans Only
Town Center Terrace	16200 Vermont Ave.	Paramount	90723	562-408-0801	Senior Veterans Only
Cordova Park Villa	330 Cordova St.	<b>Pasadena</b>	91101-91103	608-385-8563	Veteran
Rosewood Court	1888 N. Fair Oaks Ave.	<b>Pasadena</b>	91101-91103	626-398-6470	Senior Veterans Only
Centennial Place	235 E. Holly St.	<b>Pasadena</b>	91101-91103	626-585-0009	Must apply through Union Station Homeless Services
Fountain Park Apartments	13141 Fountain Park Dr.	Playa Vista	90094	310-437-6160	Veteran
Crescent Park	5710 Crescent Park E.	Playa Vista	90094	310-347-6050	Veteran
Baird Apartments	7820 Baird Ave.	Reseda	91335	818-345-1193	Veteran
San Pedro New Hope Courtyard	1124 S. Palos Verdes St.	San Pedro	90721	310-831-6851	Veteran
Pacific Avenue Arts Colony	303 S. Pacific Ave.	San Pedro	90721	310-221-0019	Veteran
Toberman Village	142 W. Santa Cruz St.	San Pedro	90721	310-519-0774	Veteran
California Hotel	1140 S. Pacific Ave.	San Pedro	90721	310-514-0172	Veteran
Santa Cruz Terrace	201 N. Beacon St.	San Pedro	90721	310-519-0774	Veteran
Santa Monica New Hope Apartments	1637 Appian Way	Santa Monica	90401	310-395-1026	Veteran
Sherman Oaks Place	5100 Woodman Ave.	Sherman Oaks	91423	818-923-0555	Veteran
Sierra Vista Senior Apartments	70 Esperanza Ave.	Sierra Madre	91024	818-763-0810	Senior Veterans Only
Holly Dale Senior Apartments	12222 Garfield Ave.	South Gate	90280	562-529-5900	Senior Veterans Only
Villa Del Sol	11971 Alleigheny St.	Sun Valley	91352	818-768-1719	Veteran

## VETERAN HOUSING

<u>Property</u>	<u>Address</u>	<u>City</u>	<u>Zip Code</u>	<u>Phone</u>	
Strathern Park East Apartments	11047 Strathern St.	Sun Valley	91352	818-768-4424	Veteran
Burns Manor Apartments	8155 Foothill Blvd.	Sunland	91040	818-352-8715	Senior Veterans Only
Cosmo Residential	12455 San Fernando Rd.	Sylmar	91342	818-415-9509	Veteran
Oakridge Homes	15455 Glenoaks Blvd.	Sylmar	91342	818-362-5000	Veteran
Harbour Community Apartments	12157 San Fernando Rd.	Sylmar	91342	818-364-7039	Veteran
Olive Manor Senior Apartments	13115 Bromont Ave.	Sylmar	91342	818-833-0298	Senior Veterans Only
Budlong Manor	11998 Terra Bella St.	Sylmar	91342	818-896-9728	Senior Veterans Only
Valley Pride Village Apartments	13200 Bromont Ave.	Sylmar	91342	818-362-2616	Senior Veterans Only
Day Street Apartments	7639 W. Day Street	Torrance	90502	818-255-2785	Veteran
Alta South Bay	22344 S. Vermont Ave.	Torrance	90502	424-244-3025	Senior Veterans Only
BlixVillas	14745 Blythe St.	Van Nuys	91401-91406	213-407-3772	Veteran
The Summit On Woodman	7354 Woodman Ave.	Van Nuys	91401-91406	818-860-9286	Veteran
Sepulveda Place Apartments	7317 Sepulveda Blvd.	Van Nuys	91401-91406	818-961-7076	Veteran
Oaktree Village Apartments	15231 Sherman Way	Van Nuys	91401-91406	213-380-7935	Veteran
Archwood Court	6740 Hazeltine Ave.	Van Nuys	91401-91406	818-350-1600 Ext. 605	Veteran
Angels City Lights	13915 W. Oxnard St.	Van Nuys	91401-91406	818-988-0275	Veteran
Greenbush Villas	13426 Vanowen St.	Van Nuys	91401-91406	818-480-0190	Veteran
Ivy Terrace Apartments	13751 Sherman Way	Van Nuys	91401-91406	213-222-1001	Veteran
Crest Apartments	13604 W. Sherman Way	Van Nuys	91401-91406	818-672-7623	Veteran
RHF Vistas Apartments	15211 Sherman Way	Van Nuys	91401-91406	818-786-1503	Senior Veterans Only
RHF West Valley Towers	14650 Sherman Way	Van Nuys	91401-91406	(818) 786-0113	Senior Veterans Only
Andalucia Senior Apartments	15305 Lanark St.	Van Nuys	91401-91406	818-756-0000	Senior Veterans Only
La Coruna	15305 Lanark St.	Van Nuys	91401-91406	818-756-0000	Senior Veterans Only
Adda and Paul Safran Senior Housing	151 Ocean Front Walk	Venice	90291	310-450-9545	Senior Veterans Only
Imani Fe Apartments	10424 S. Central Ave.	Watts	90002	323-249-0732	Veteran
Detroit Family Apartments	1155 N. Detroit St.	West Hollywood	90046	323-650-8771	Veteran
Whittier Terrace Apartments	11445 Santa Gertrudes Ave.	Whittier	90604	818-888-5218	Veteran
Vista del Mar	1116W. DSt.	Wilmington	90744	562-755-7760	Veteran
New Dana Strand Townhomes	450 King Ave.	Wilmington	90744	310-241-6867	Veteran
Roscoe Apartments	450 King Ave.	Wilmington	90744	310-549-4138	Veteran
Roscoe Apartments	20234 Roscoe Blvd.	Winnetka	91306	818-960-2063	Veteran
Winnetka Village - Senior Apartments	20750 Sherman Way	Winnetka	91306	818-710-1305	Senior Veterans Only
Bella Vista	6150 De Soto Ave.	Woodland Hills	91367	909-865-2470	Veteran

# HOUSING RESOURCES & PROGRAMS

This section provides information about financial assistance, temporary shelters, transitional programs, and other housing resources.





## Public Housing Authorities

These government agencies run public housing and/or housing assistance programs, including Section 8, in the Los Angeles and Ventura areas. **Contact these agencies to apply for housing assistance.**

---

### Los Angeles County

#### **Baldwin Park Housing Authority**

14403 E. Pacific Ave.  
Baldwin Park, CA 91706  
626-869-7500 Office  
626-813-5285 Application Line

#### **Burbank Housing Authority**

150 N. 3rd Street  
Burbank, CA 91510  
818-238-5160

#### **Compton Housing Authority**

700 N. Bullis Rd.  
Compton, CA 90221  
310-605-3080

#### **Culver City Housing Authority**

9770 Culver Blvd.  
Culver City, CA 90232  
310-253-5780

#### **Glendale Housing Authority**

141 N. Glendale Ave. Ste. 202  
Glendale, CA 91026  
818-548-3936

#### **Hawaiian Gardens Housing Authority**

21815 Pioneer Blvd  
Hawaiian Gardens, CA 90716 562-420-  
2641 x 270

#### **Hawthorne Dept. of Housing & Community Development**

4455 W. 126th Street Hawthorne, CA  
90250  
310-349-1603

#### **Inglewood Housing Authority**

1 W. Manchester Blvd., Suite 750  
Inglewood, CA 90301  
310-412-5221

#### **Long Beach Housing Authority**

521 East 4th Street  
Long Beach, CA 90802  
562-570-6985

#### **Housing Authority of the City of Los Angeles**

2600 Wilshire Blvd.  
Los Angeles, CA 90057  
213-252-2500

#### **Los Angeles County Development Authority**

700 W. Main Street  
Alhambra, CA 91801  
(800) 731-4663  
(626) 262-4510

#### **Los Angeles County Development Authority - Antelope Valley**

2323 Palmdale Blvd., Suite B  
Palmdale, CA 93550  
661-575-1511

#### **Norwalk Housing Authority 12700**

Norwalk Blvd. Room 11  
Norwalk, CA 90650  
562-929-5588

#### **Pasadena Housing Authority**

649 N. Fair Oaks Ave. Suite 202  
Pasadena, CA 91103  
626-744-8300

#### **Pico Rivera Housing Authority**

6615 Passons Blvd.  
Pico Rivera, CA 90660  
562-801-4347

#### **Pomona Housing Authority**

505 S. Garey Ave.  
Pomona, CA 91769  
909-620-2368

**Redondo Beach Housing Authority**  
1922 Artesia Blvd.  
Redondo Beach, CA 90278  
(310) 318-0635

**South Gate Housing Authority**  
8650 California Avenue  
South Gate, CA 90280  
323-563-9599

**Santa Monica Housing Authority**  
1901 Main St. Suite C  
Santa Monica, CA 90405  
310-458-8740

**Torrance Housing Authority**  
3031 Torrance Blvd.  
Torrance, CA 90503  
310-618-5840

**Ventura County**

**Oxnard Housing Authority**  
435 South D Street Oxnard, CA 93030  
805-385-8041

**Port Hueneme Housing Authority**  
250 N. Ventura Road  
Port Hueneme, CA 93041 805-986-6527

**San Buenaventura Housing Authority**  
995 Riverside Street  
Ventura, CA 93001  
805-648-5008

**Santa Paula Housing Authority**  
15500 West Telegraph Road, Suite B-11  
Santa Paula, CA 93060  
805-525-3339

**Ventura County Housing Authority**  
1400 W. Hillcrest Dr.  
Newbury Park, CA 91320  
805-480-9991

# LA COUNTY CES RESOURCES 2024

## SHELTER, SUPPORTIVE SERVICES, HOUSING REFERRALS

**Need a place to sleep tonight?**

Call 211, the numbers below or visit [lahsa.org/ces/home/gethelp](https://lahsa.org/ces/home/gethelp) for details.



**Shelter for Adults**  
(age 18 +)  
**(800) 548-6047**



**Shelter for Families**  
(Household with a child under age 18)  
**2-1-1**



**Shelter for Youth**  
(age 16-24)  
**(800) 548-6047**

### QUICK GUIDE FOR CES ACCESS CENTERS

Call for interim housing and shelter; emergency food provision, healthcare, hygiene services, storage; housing referrals.

	AREA	ADULTS (ages 18+)	FAMILIES	YOUTH (ages 16-24)
1	Antelope Valley	The Salvation Army (661) 948-3418	Valley Oasis (661) 239-9300	Volunteers of America (661) 952-7095
2	San Fernando & Santa Clarita Valley	Hope of the Valley (818) 804-5507 San Fernando Valley Mental Health Center (818) 901-4836	LA Family Housing (818) 255-2766	Volunteers of America (818) 691-5506 & (213) 610-7531
3	San Gabriel Valley	Volunteers of America – El Monte (626) 442-4357	Union Station (626) 337-0140	Hillsides/YMO (626) 765-6010
4	Central Los Angeles	Downtown Women's Center (213) 680-0600; Weingart (213) 833-5020; The Midnight Mission (213) 624-9258; The Salvation Army – Hollywood (323) 337-1666	PATH (310) 212-6285	LA LGBT Center (323) 860-2280 My Friend's Place (323) 908-0011 Ext100
5	West Los Angeles	St. Joseph Center (310) 399-6878 The People Concern (310) 450-4050	St. Joseph Center (310) 694-6035	Safe Place for Youth (310) 902-2283
6	South Los Angeles	HOPICS (323) 948-0444 & HOPICS Navigation (323) 814-9100 Ext 711 Watts Labor Community Access Center (323) 563-4721	HOPICS (323) 432-4383	CRCD/Ruth's Place (323) 432-2440
7	East Los Angeles	American Family Housing (562) 378-5552	The Whole Child (562) 204-0640	Jovenes (323) 621-2213
8	South Bay/Harbor	Harbor Interfaith Services (424) 276-3602	Harbor Interfaith (310) 831-0589	Sanctuary of Hope (424) 374-8038



Note: If your Section 8 voucher is rejected in rental housing, call HRC at 1-800-477-5977 or email us at [info@housingrightscenter.org](mailto:info@housingrightscenter.org).



# UNHOUSED OR AT RISK?



**Call 211 or a program below for help in your search for housing, shelter and/or resources.**

(W) = Women; (M) = Men; (TAY) = Transitional aged youth ages 18-24. (C) = Children are welcomed.

"Transitional housing" is shared housing and may consist of shared bedrooms.

Program	Program Type	Population	Contact/Apply	Details	Address
Advancing Communities Together	Emergency winter shelter	Adults ages 18+	(661) 266-8900	Saturday and Sunday 24 hours. Call 211 for transportation.	38626 9th St., E. Palmdale, CA 93550
Volunteers of America of Los Angeles	Emergency services and housing navigation	TAY	(323) 579-0489; (323) 872-0273	Help with security deposit, partial rent, and mental health counseling. Must work 35+ hours; attend college.	S. 412 E. Beverly Blvd, LA 90022
Central Neighborhood Health Foundation	Housing navigation and tenancy support	General	(323) 325-5882	Help with housing search and GR application; move in costs, security deposits and rental assistance	2614 S. Grand Ave., LA 90007
DWC - Community Based Housing	Rapid Re-Housing	Unhoused or at risk (W) veterans Pregnant (W) currently or previously unhoused or in unsafe environment	(213) 308-3396; (323) 640-9344	Help with case management and housing navigation. ID, SSN card, birth certificate of child, proof of income are required.	325 S. Los Angeles St. Suite 200, LA, 90013
Harvest Home	Residential program		(110) 452-1223 #5	Help with mental health counseling, financial literacy, bible study, nutrition classes; case management.	
Above and Beyond Housing	Transitional housing	(M)		\$45 application fee; \$600 monthly rent w/utilities	
Bright Path Center	Transitional housing	General	(323) 345-4322		



**Call 211 or a program below for help in your search for housing, shelter and/or resources.**

(W) = Women; (M) = Men; (TAY) = Transitional aged youth ages 18-24. (C) = Children are welcomed.

"Transitional housing" is shared housing and may consist of shared bedrooms.

Program	Program Type	Population	Contact/Apply	Details	Address
NehemiahLA Dream Chaser	Transitional housing	Formerly TAY (W)	<a href="https://form.jotform.com/2309336596559069">https://form.jotform.com/2309336596559069</a>	Ages 20-26 no longer in foster care; must work or attend school full time, or both part time; pass background check	SPA 7
New Economics for Women - La Posada	Transitional housing	(W); (C)	(213) 483-2058	1 child up to 8 years of age welcomed; \$500 monthly rent	
Noah's Transitional Housing	Transitional housing	Individuals; Families	(424) 307-4531	Private and shared rooms	
Olive Services Group	Transitional housing	(W) in re-entry; (C)	(661) 941-8688		West Lancaster, CA
SAFE Transitional Housing	Transitional housing	(W); (C)	(323) 509-4135	All bills paid.	
SHARE!	Transitional housing	(M)	(877) 742-7349	SSI or equivalent income required.	
The AMAAD Institute	Transitional housing	GBTQ ages 18+ (M)	HousingTeam@amaad.org		
The Infinity House	Transitional housing	General	(888) 762-7584	\$750 monthly rent	
Turning Point	Transitional housing	Sober re-entry (W)	(323) 296-1840		LA, CA 90008

**If you find a correction must be made, please notify HRC.**



# HOMELSSNESS PREVENTION PROGRAM



LAST UPDATED May 16, 2023

## WHAT IS HOMELESS PREVENTION?

Homeless Prevention provides individuals and families who are at imminent risk of homelessness with:

- Temporary financial assistance and housing stabilization services necessary to maintain their current housing, OR
- Assistance finding new housing to avoid becoming homeless and entering the emergency shelter system.

## WHO IS ELIGIBLE FOR THE HOMELESS PREVENTION PROGRAM?

Homeless Prevention may be available to persons who meet all the following criteria:

- Experiencing a financial crisis; and
- Have received an Unlawful Detainer (court eviction hearing notice or court-ordered eviction) or a written notice of intent to terminate tenancy from a landlord (includes 3-day pay or quit); and
- Lacks financial resources and support networks to obtain other permanent housing. Participants must be screened by the Prevention Program provider and deemed as having a high risk of becoming homeless.

## WHAT ARE THE REQUIRED INCOME ELIGIBILITY GUIDELINES FOR ASSISTANCE?

- Must fall below the 50% Area Median Income (AMI)
- Formerly Homeless Section 8 holders with income up to 80% of Area Median Income (AMI)

2023 AMI Area Median Income	Household Size							
	1	2	3	4	5	6	7	8
<b>0% to 50% Income Limits Annual Household Income</b>	\$44,150	\$50,450	\$56,750	\$63,050	\$68,100	\$73,150	\$78,200	\$83,250
<b>51% to 80% Income Limits Annual Household Income</b>	\$70,650	\$80,750	\$90,850	\$100,900	\$109,000	\$117,050	\$125,150	\$133,200



@lahsaorg  
@LAHomeless  
@LAHomelessServicesAuthority



## WHAT SERVICES DOES THE HOMELESS PREVENTION PROGRAM INCLUDE?

Services	Financial Assistance	
<ul style="list-style-type: none"> <li>• Housing Stabilization</li> <li>• Housing Search &amp; Placement</li> <li>• Income Stabilization</li> <li>• Landlord Mediation &amp; Advocacy</li> <li>• Legal Advocacy</li> <li>• Reunification/Relocation Assistance</li> </ul>	<ul style="list-style-type: none"> <li>• Security Deposit</li> <li>• Rental Arrears</li> <li>• Rental Assistance</li> <li>• Utility Deposit</li> <li>• Utilities Assistance</li> <li>• Utility Arrears</li> <li>• Move-in Expenses</li> </ul>	<ul style="list-style-type: none"> <li>• Moving Expenses</li> <li>• Essential Furnishings Expenses</li> <li>• Employment Expenses</li> <li>• Transportation Expenses</li> <li>• Reunification/Relocation Expenses</li> </ul>

## WHERE CAN I ACCESS THIS PROGRAM?

Homelessness Prevention resources can be accessed by contacting a service provider in your area:

### FAMILY SERVICE PROVIDERS

Service Planning Area (SPA)	Provider	Contact
<b>SPA 1: Antelope Valley</b>	Valley Oasis	661-942-2758 661-239-9300 ext. 500
<b>SPA 2: San Fernando Valley</b>	LA Family Housing	<a href="mailto:referrals@lafh.org">referrals@lafh.org</a>
<b>SPA 3: San Gabriel Valley</b>	Union Station Homeless Services	<a href="mailto:fscreferral@unionstationhs.org">fscreferral@unionstationhs.org</a> (626) 337-0140
<b>SPA 4: Metro Los Angeles</b>	People Assisting the Homeless (PATH)	<a href="mailto:familyreferral@epath.org">familyreferral@epath.org</a> (323) 212-6285
<b>SPA 5: West Los Angeles</b>	St. Joseph Center	<a href="mailto:RRHSPA5@stjosephctr.org">RRHSPA5@stjosephctr.org</a>
<b>SPA 6: South Los Angeles</b>	Special Services for Groups-HOPICS	Epp@hopics.org 323-432-499
<b>SPA 7: East Los Angeles</b>	The Whole Child	562-204-0640 Ext.600
<b>SPA 8: South Bay</b>	Harbor Interfaith Services	310-831-0589



@lahsaorg  
 @LAHomeless  
 @LAHomelessServicesAuthority



# ADULT SERVICE PROVIDERS

Service Planning Area (SPA)	Provider	Contact
SPA 1: Antelope Valley	Valley Oasis	661-942-2758 661-239-9300 ext. 400
SPA 2: San Fernando Valley	LA Family Housing	<a href="mailto:referrals@lafh.org">referrals@lafh.org</a>
SPA 3: San Gabriel Valley	Volunteers of America (VOA)	<a href="mailto:cavilez@voala.org">cavilez@voala.org</a> (626) 442-4357
SPA 4: Metro Los Angeles	People Assisting the Homeless (PATH)	<a href="mailto:spa4referrals@epath.org">spa4referrals@epath.org</a> 323-644-2200/323-391-3553
	The People Concern	323-313-3700
SPA 5: West Los Angeles	The People Concern	<a href="mailto:spa5preventionrrh@thepeopleconcern.org">spa5preventionrrh@thepeopleconcern.org</a>
	People Assisting the Homeless (PATH)	213-332-4066
	St. Joseph Center	<a href="mailto:RRHSPA5@stjosephctr.org">RRHSPA5@stjosephctr.org</a>
SPA 6: South Los Angeles	Special Services for Groups-HOPICS	<a href="mailto:epp@hopics.org">epp@hopics.org</a> 323-432-4399
	St. Joseph Center	323-905-1140
	Volunteers of America	DeAnna Simms <a href="mailto:Dsims@voala.org">Dsims@voala.org</a> 213-392-9036 Kanna Curtis <a href="mailto:Kcurtis@voala.org">Kcurtis@voala.org</a> 323-508-3846
SPA 7: East Los Angeles	People Assisting the Homeless (PATH)	<a href="mailto:SPA7PreventionReferrals@epath.org">SPA7PreventionReferrals@epath.org</a> 213-359-7595
SPA 8: South Bay	1736 Family Crisis Center	323-737-3900
	Harbor Interfaith Services	310-831-0589
	People Assisting the Homeless (PATH)	Laria Breland <a href="mailto:LariaB@epath.org">LariaB@epath.org</a> Courtney Reed <a href="mailto:CourtneyR@epath.org">CourtneyR@epath.org</a>



@lahsaorg  
@LAHomeless  
@LAHomelessServicesAuthority





# YOUTH SERVICE PROVIDERS

Service Planning Area (SPA)	Provider	Contact
SPA 1: Antelope Valley	Valley Oasis	661-942-2758 661-239-9300 ext. 400
SPA 2: San Fernando Valley	The Village Family Services	818-755-8786
SPA 3: San Gabriel Valley	Sycamores Child and Family Services	<a href="mailto:youthreferral@sycamores.org">youthreferral@sycamores.org</a> 855-600-0777
SPA 4: Metro Los Angeles	Covenant House	<a href="mailto:icamposcristobal@covca.org">icamposcristobal@covca.org</a> 323-461-3131 ext. 313
SPA 5: West Los Angeles	St. Joseph Center	<a href="mailto:daniel@safeplaceforyouth.org">daniel@safeplaceforyouth.org</a>
SPA 6: South Los Angeles	Coalition for Responsible Development	Samantha Kidd <a href="mailto:Skidd@coalitionrcd.org">Skidd@coalitionrcd.org</a> 323-206-6954
	Volunteers of America	DeAnna Simms <a href="mailto:Dsimms@voala.org">Dsimms@voala.org</a> 213-392-9036
SPA 7: East Los Angeles	Jovenes, Inc.	<a href="mailto:jdelacruz@jovenesinc.org">jdelacruz@jovenesinc.org</a>
SPA 8: South Bay	Harbor Interfaith Services	310-831-0589



Scan me for direct links to provider websites and additional resources!



@lahsaorg  
@LAHomeless  
@LAHomelessServicesAuthority





November 1, 2024 – March 31, 2025

# Winter Shelter Season Efforts



## WINTER SEASON STRATEGY:

LAHSA is utilizing **four strategies** to address the needs of people experiencing homelessness during the winter months in **FY 24-25**:

- Outreach Engagement
- Warming Centers
- Seasonal Winter Shelters
- Emergency Response Program

## OUTREACH:

Outreach teams continuously engage unsheltered individuals to build rapport, refer them to interim housing and permanent housing resources, and assist them in collecting essential documents.

Throughout the winter, they identify individuals who are highly vulnerable to winter weather and provide information on available warming centers, shelter services, and permanent housing resources.

## SEASONAL WINTER SHELTERS:

Seasonal Winter Shelters are open continuously from November 1 to March 31. They help save lives by providing people experiencing unsheltered homelessness with a warm place to stay during the cold winter months. They accept people on a first-come-first-serve basis and are open either 12-14 hours or 24/7.

Participants receive a cot or bed, three meals per day, access to bathrooms and showers, and supportive services to transition to other housing opportunities. During severe weather, the Emergency Response Program will be activated to increase capacity and bring more people indoors.

## WHO IS ELIGIBLE FOR SEASONAL WINTER SHELTER?

Seasonal Winter Shelter sites serve:

- Households consisting of 1-2 persons over the age of 18
- Experiencing unsheltered homelessness

## THE EMERGENCY RESPONSE PROGRAM:

The City or County of Los Angeles may activate the Emergency Response Program in the event of severe cold, rain, or other emergency.

The Emergency Response Program uses the following strategies to increase bed capacity rapidly so more people can come safely inside:

- Expanded capacity at existing interim housing sites
- Utilization of hotel/motel vouchers
- Pop-up shelters at parks and recreation facilities, churches, and other facilities

## The public and outreach teams will be notified of an activation via:

- Constant Contact notification
- Coordination Calls
- Release of flyers
- Social Media
- Website Update: [LAHSA.org/Emergency-Response](https://LAHSA.org/Emergency-Response)

## WARMING CENTERS

Warming centers are facilities that are open to the public that individuals experiencing homelessness can utilize to come indoors from the rain/cold. They include:

1. Libraries
2. Community Centers
3. Recreation facilities
4. Malls and other public spaces

- Individuals who are experiencing unsheltered homelessness are encouraged to utilize these spaces to come indoors from the rain/cold.
- Outreach teams will share information on warming center locations with participants and will also be available online.
- For more information on these resources please visit:

- For LA County - Ready LA County: <https://ready.lacounty.gov/>
- For LA City - Climate Equity LA: <https://www.climate4la.org/>

## HOW DO PEOPLE ACCESS A SHELTER?

### 1. Self-referral

Below is a list of Seasonal Winter Shelter locations and their addresses. Participants can go directly to the shelter. The shelters accept individuals on a first-come-first-serve basis if space is available. Individuals can dial 2-1-1 or 1-800-548-6047 from any phone to check availability at Seasonal Winter Shelter and Emergency Response Program Shelter (when activated). They may also request information on traditional interim housing sites and request transportation to the site.

### 2.211 LA

Participants can dial 2-1-1 or 1-800-548-6047 from any phone to check availability, request a referral, and be transported to and from traditional interim housing, Seasonal Winter Shelter, and Emergency Response Program sites (when activated). 211 can also check on the availability of hotel/motel vouchers.

### 3. Outreach Teams

Individuals can ask outreach teams to refer them and transport them to the shelter. If the Emergency Response Program is activated and hotel/motel vouchers are available, outreach workers can assist them in getting a hotel/ motel voucher.



November 1, 2024 – March 31, 2025

# Winter Shelter Season Efforts



SPA	CD	SD	Period of Operation	Location	Service Provider	Address	# of Beds	Population Served
6	8	2	11/1/24 to 3/31/25	NR Adult WSP Site	New Reflections	8311 S Western Ave Los Angeles, CA 90047	60	Male
6	9	2	11/1/24 to 3/31/25	BT Adult WSP Site	Bryant Template Community Development	5500 S Hoover St Los Angeles, CA 90037	70	Gender Inclusive
7	NA	4	11/1/24 to 3/31/25	WFD Adult WSP Site -Whittier	Whittier First Day	12426 Whittier Blvd. Whittier, CA 90602	11	Gender Inclusive



# 2023-2024 Programa de Albergue de Invierno

## Fechas de Funcionamiento:

### 1 de Noviembre 2023 - 31 de Marzo 2024

ÚLTIMA ACTUALIZACIÓN: 6 de diciembre de 2023

## ¿NECESITA UN ALBERGUE DE EMERGENCIA?

Los albergues de invierno son un programa que se realiza anualmente en Los Angeles para proteger a las personas sin hogar durante los meses más fríos del año. Los albergues se encuentran distribuidos a lo largo del condado de Los Angeles y operarán las 24 horas del día, 7 días a la semana.

## ¿SOY ELEGIBLE PARA EL PROGRAMA DE ALBERGUES DE INVIERNO?

Los requisitos para acceder a uno de los albergues de invierno son:

- Tener por lo menos 18 años
- No tener un lugar donde vivir
- Ser una sola persona – sin pareja o hijos de menor de edad

## ¿QUÉ ESPERAR DE UN ALBERGUE DE INVIERNO?

- Los albergues seguirán las directivas del Departamento de Salubridad y protocolos de el COVID-19 y viruela de mono para mantener a todos sanos y seguros durante su estancia.
- Los albergues admiten mascotas y animales de apoyo emocional.
- Los albergues sirven 3 comidas al día.

## CÓMO ACCEDER A UN ALBERGUE DE INVIERNO

### 1 ENCUENTRE UN ALBERGUE

En la página 2 encontrará la lista de los albergues con sus direcciones. Elija aquel que se encuentre más cerca a usted.

### 2 LLAME PARA CONFIRMAR LA DISPONIBILIDAD DE ESPACIO

De cualquier teléfono, marque 2-1-1 para ser conectado al albergue más cercano a usted. Siga las siguientes instrucciones:

1. Presione 5 para ser atendido en español
2. Cuando se lo indique, presione 3 para alberques y comida
3. Cuando se lo indique, presione 2 para albergues
4. Cuando se lo indique, presione 1 para individuos o parejas sin hijos buscando albergue para el invierno

Si desea un servicio más rápido, marque 1-800-548-6047. El servicio 211 LA County se asegurará de que haya una cama disponible para usted antes de ser referido al albergue. Existe un número limitado de camas en cada albergue.

### 3 PERTENENCIAS




Solo se permiten dos (2) bolsas por persona.

### 4 MEDIO DE TRANSPORTE

El transporte es limitado - llame a 2-1-1 para información sobre transporte al albergue.

Para cualquier consulta, envíenos un correo electrónico a [wintershelter@lahsa.org](mailto:wintershelter@lahsa.org)

Para obtener más información, llame a la línea directa 1 (800) 548-6047 o visite [LAHSA.ORG/WINTER-SHELTER](http://LAHSA.ORG/WINTER-SHELTER)

 @lahsaorg  
 @LAHomeless  
 @LAHomelessServicesAuthority



Seasonal Winter Shelter Sites								
SPA	CD	SD	Period of Operation	Location	Service Provider	Address	# Of Beds	Population Served
1	NA	5	12/5/2023-3/31/2024	HD MACC Glenschur	Volunteers of America	45150 60th St., W. Lancaster, 93536	44	Gender Inclusive
1	NA	5	11/24/2023-3/31/2024	ACT Adult WSP Site	Advancing Communities Together	38626 9th St E. Palmdale, CA 93550	35	Gender Inclusive
4	8	2	11/1/2023-3/31/2024	HAL Adult WSP Site	Home at Last	8768 S. Broadway Los Angeles, CA 90003	50	Female
6	8	2	11/6/2023-3/31/2024	NR Adult WSP Site	New Reflections	8311 S Western Ave Los Angeles, CA 90047	55	Male
6	10	2	11/1/2023-3/31/2024	AB Adult WSP Site	Abundant Blessings	1133 S Ardmore Ave Los Angeles, CA 90006	32	Male
6	9	2	11/13/2023-3/31/2024	BT Adult WSP Site	Bryant Temple Community Development	5500 S. Hoover St. Los Angeles, CA 90037	60	Male
6	8	2	12/1/2023-3/31/2024	ALH El Don Motel	Assured Lifestyle Housing	9519 S Figueroa Street, Los Angeles, Ca 90003	11	Gender Inclusive
6	8	2	12/1/2023-3/31/2024	ALH One Ten Motel	Assured Lifestyle Housing	700 W Florence Ave, Los Angeles, CA 90044	9	Gender Inclusive
6	8	2	12/6/2023-3/31/2023	FTS Adult WSP Site- Vernon	First to Serve	1718 W Vernon Ave Los Angeles, CA 90062	41	Gender Inclusive
7	NA	4	11/1/2023-3/31/2024	WFD Adult WSP Site - Whittier	Whittier First Day	12426 Whittier Blvd, Whittier, CA 90602	11	Gender Inclusive
8	NA	4	11/14/2023-3/31/2024	FTS Adult WSP Site- Long Beach	First to Serve	702 W Anaheim St. Long Beach CA 90813	40	Gender Inclusive





# FY 24-25 Safe Parking Program



@lahsaorg  
@LAHomeless  
@LAHomelessServicesAuthority



## WHAT IS SAFE PARKING?

The Safe Parking program gives people living in their cars, vans, and RVs/campers a safe and legal place to park and sleep at night.

## WHAT SERVICES DO SAFE PARKING PROGRAMS PROVIDE?

- A place to safely park and rest inside your vehicle
- Access and use of a restroom and handwashing station
- On-site security
- Financial Assistance
- Case management and referrals to community resources

*\*Site amenities vary according to each site. Please see site information on next page*

## AM I ELIGIBLE FOR SAFE PARKING?

To access the Safe Parking program, you must be:

- Experiencing homelessness in your vehicle
- Have a valid driver's license

*\*Admission is based on eligibility screening; participants must have operable vehicles*

## HOW DO I ACCESS A SAFE PARKING PROGRAM?

### 1 FIND A PROGRAM

Pick a Safe Parking site that is close to you

### 2 CALL FOR AVAILABILITY AND ARRANGE INTAKE

A referral can also be submitted using the [online referral form](#)

Web address to online referral form:

<https://www.tinyurl.com/safeparkingreferral>

### 3 PICK UP YOUR PARKING PASS

During intake you will be given a parking pass to allow you access to the site

### 4 GO TO THE SAFE PARKING LOCATION

Safe Parking program operating hours vary by location. Participants must leave the lot by a certain time each morning. Refer to hours of operation at each location

# SAFE PARKING SITES

Service Provider	SPA	Location	Phone Number	Email	Operating Hours	RVs Allowed?	Population Served
Volunteers of America	1	Lancaster	(661) 723-4873	<a href="mailto:icaves@voala.org">icaves@voala.org</a>	24 Hours	Yes	Adults & Youth
North Valley Caring Services	2	North Hills	(747) 217-2968	<a href="mailto:referrals@nvcsinc.org">referrals@nvcsinc.org</a>	<b>Mon-Fri:</b> 7 p.m. – 7 a.m. <b>Sat-Sun:</b> 7 p.m. – 6 a.m.	No	Adults & Families
North Valley Caring Services	2	Northridge	(747) 217-2968	<a href="mailto:referrals@nvcsinc.org">referrals@nvcsinc.org</a>	7 p.m. – 7 a.m.	Yes	Adults Families & Youth
Safe Parking LA	2	Reseda	(323) 210-3375	<a href="mailto:intakes@safeparkingla.org">intakes@safeparkingla.org</a>	7:30 p.m. - 6:30 a.m.	No	Adults & Families
Volunteers of America	2	Van Nuys	(213) 247-6261	<a href="mailto:nshea@voala.org">nshea@voala.org</a>	9 p.m. – 6 a.m.	No	Adults
End Homelessness CA	4	Glassell Park	(424) 343-7752	<a href="mailto:safeparking@theshowerofhope.org">safeparking@theshowerofhope.org</a>	7 p.m. – 7 a.m.	Yes	Adults
End Homelessness CA	4	Westlake	(424) 343-7752	<a href="mailto:safeparking@theshowerofhope.org">safeparking@theshowerofhope.org</a>	7 p.m. – 7 a.m.	Yes	Adults
Safe Parking LA	4	Downtown LA	(323) 210-3375	<a href="mailto:intakes@safeparkingla.org">intakes@safeparkingla.org</a>	7:30 p.m. - 7:30 a.m.	No	Adults, Families & Youth
Safe Parking LA	5	Sawtelle	(323) 210-3375	<a href="mailto:intakes@safeparkingla.org">intakes@safeparkingla.org</a>	7:30 p.m. - 7:30 a.m.	No	Adults, Families & Youth
Safe Parking LA	5	West LA VA	(323) 210-3375	<a href="mailto:intakes@safeparkingla.org">intakes@safeparkingla.org</a>	6:30 p.m. - 7:30 a.m.	Yes	Veterans (Adults, Families & Youth)
Safe Parking LA	5	Culver City	(323) 210-3375	<a href="mailto:intakes@safeparkingla.org">intakes@safeparkingla.org</a>	7:30 p.m. - 7:30 a.m.	No	Adults, Families & Youth
Special Services for Groups (HOPICS)	6	South LA	(323) 948-0444	<a href="mailto:safeparking@hopics.org">safeparking@hopics.org</a>	8:15 p.m. – 7 a.m.	Yes	Adults & Families
Special Services for Groups (HOPICS)	6	South Central	(323) 948-0444	<a href="mailto:safeparking@hopics.org">safeparking@hopics.org</a>	7 p.m. – 7 a.m.	No	Adults
Special Services for Groups (HOPICS)	6	Compton	(323) 948-0444	<a href="mailto:safeparking@hopics.org">safeparking@hopics.org</a>	7:30 p.m. - 6:30 a.m.	Yes	Adults & Families
WLCAC	6	Watts	(213) 408-6510	<a href="mailto:lzayed@wlcac.org">lzayed@wlcac.org</a>	7 p.m. – 10 a.m.	Yes	Adults & Youth
Volunteers of America	7	Whittier	(213) 247-6261	<a href="mailto:nshea@voala.org">nshea@voala.org</a>	8 p.m. - 6:30 a.m.	No	Adults & Families
Volunteers of America	7	East LA	(213) 247-6261	<a href="mailto:nshea@voala.org">nshea@voala.org</a>	24 Hours	No	Adults & Families
Volunteers of America	8	San Pedro	(213) 247-6261	<a href="mailto:nshea@voala.org">nshea@voala.org</a>	6 p.m. – 6 a.m.	No	Adults, Families & Youth
WLCAC	8	Torrance	(213) 408-6510	<a href="mailto:lzayed@wlcac.org">lzayed@wlcac.org</a>	7 p.m. – 6 a.m.	No	Adults, Families & Youth



The list below indicates some of the Dating Violence and Domestic Violence Agencies in Los Angeles County. The list below is of some of the most comprehensive programs available to support survivors and their families. Services available per agency vary and are not subject to restriction within their SPA, please ensure to call and assess their current available services and their service area in order to align them with the survivor's needs. The **(SP)** next to the name of the agency represents that they have shelter programs.

**1736 Family Crisis Center (SP)**

Los Angeles, CA 90018

Office Number: (323) 737-3900

24-Hour Hotline (213) 745-6434

**Casa de La Familia**

Los Angeles, CA 90010

Office Number: (213) 384-7660

**Children's Institute**

Los Angeles, CA 90026

Office Number: (213) 260-7600

**East LA Women's Center (SP)**

Los Angeles, CA 90022

Office: (323) 526-5819

**Haven Hills (SP)**

Canoga Park, CA 91305

Crisis: (818) 887-6589

Office: (818) 887-7481

**Angel Step Inn (SP)**

Downey, CA 90241

Office Number: (323) 780-4357

**Center for the Pacific Asian Family (SP)**

Los Angeles, CA 90036

24-Hour Hotline: (800) 339-3940

**Child & Family Center of Santa Clarita (SP)**

Santa Clarita, CA 91350

Emergency Hotline: (661) 259-HELP (4357)

Non-Emergency Support Line: (661) 259-8175

Office: (661) 259-9439

**Good Shepherd Center (SP)**

Los Angeles, CA 90026

Office Number: (213) 235-1460

**House of Ruth, Inc. (SP)**

Claremont, CA 91711

Crisis Line: (877) 988-5559

Outreach Office: (909) 623-4364

**Interval House (SP)**

Seal Beach CA, 90740

Office: (562) 594-4555

**Jewish Family Services Los Angeles (SP)**

North Hollywood, CA 91606

Office: (818) 505-0900

**Peace Over Violence**

Los Angeles, CA 90017

24-Hr Hotline: 213-626-3393

310-392-8381

626-793-3385

Office: 213-955-9090

**Strength United**

Van Nuys, CA 90027

Crisis Line: (818) 886-0453

Office: (818) 787-9700

**The People Concern/Sojourn (SP)**

Santa Monica, CA 90404

Crisis Line: (866) 435-7438

Office: (310) 264-6646

**Valley Oasis (SP)**

Lancaster, CA 93534

24 Hour Hotline: (661) 945-6736

**YWCA San Gabriel Valley (SP)**

Covina CA, 91724

Crisis: (626) 967-0658

Office: (626) 960-2995

**Jenesse Center (SP)**

Los Angeles, CA 90008

24-Hour Hotline: (800) 479-7328

**Los Angeles LGBT Center**

Los Angeles, CA 90028

Office Number: (323) 993-7400

**Project: PeaceMakers, Incorporated**

Los Angeles, CA 90082-0361

Phone number:

Office: (323) 291-2525

**Rainbow Services, Ltd. (SP)**

San Pedro, CA 90731

Phone Number: (310) 548-5450

**Su Casa Ending Domestic Violence (SP)**

Long Beach, CA 90808

Office: (562) 402-4888

**The Trevor Project**

West Hollywood, CA

Hotline Number: 1-866-488-7386

**Women's Shelter of Long Beach (SP)**

Long Beach CA, 90832

Crisis: (562) 437-4663

Office: (562) 437-7233

**YWCA of Glendale (SP)**

Glendale CA, 91206

**(888)** 999-7511

To get a full list of the available DV Resources in the County, please check out: [No DV LA Website](#)

## HOPWA {HOUSING OPPORTUNITIES FOR PEOPLE WITH AIDS}

<b>Program</b>	<b>City</b>	<b>Contact</b>	<b>Services Available</b>	<b>Eligibility Requirements</b>
<b>Alliance for Housing and Healing's Group Home Program - Casa Soldano</b>	Long Beach	Request from and return application to Facility Manager, Sokha Sea, at (562) 595-4877 or ssea@alliancehh.org. Assistant Manager: Frank Wilson fwilson@alliancehh.org.	Transitional housing, for persons of all genders, unable to perform activities of daily living to meet their personal needs: Meals: Medication management: ADLs, Nursing Assistants, RN Case Managers, MSW, LCSW.	HIV/AIDS diagnosis (current form with CD4 & VL): Karnofsky Score of 70% or below: Age 18 or older: 6 month sobriety period required while in program with random testing in facilities. Negative COVID-19 test may be required: new residents will be monitored for evidence of COVID-19 for (5) days.
<b>Redgate WE CAN Transitional Housing</b>		Contact Esperanza Romero at (310) 701-6007 or eromero@bhs-inc.org.	Transitional housing program for women and transgender (18+) years of age or older.	SSI Benefits Award letter (dated within last 12 months): GR Awards letter (3 months of net spend transactions): Bank statements (last 3 months): D card: copy of HIV+ diagnosis.
<b>Single Room Occupancy (SRO) Housing Corporation</b>	Los Angeles - Central City East (Skid Row)	Housing Specialists should call (213) 633-5458 or (213) 572-0483	Emergency, transitional, and permanent supportive housing with private units: three (3) meals daily (in emergency and transitional housing); toiletries: housing specialist services: information and referrals.	Copy of HIV/AIDS diagnosis (dated within last 12 months): unhoused or at risk of becoming unhoused: referral letter: proof of low or no income: age (18+). valid D and social security card: current TB test (dated within last 6 months): negative COVID test (dated within last 30 days)
<b>Welcoming Interim Shared Housing (WISH)</b>	Los Angeles	www.welcomewish.org contact@welcomewish.org (424) 567-9087. Phone, emails, and virtual/in-person meetings are welcomed.	50+ beds filled for families and individuals (working to get more beds): specialized housing: sober living, women and children homes, mental health: AB 109 housing; wrap around case management and referrals: adult AA, NA, substance abuse and counseling support groups: 20 free public transit rides: vocational, recreation and self care programs: food assistance: relocation funds.	
<b>Wesley Health Centers - HOPWA Residential Emergency Shelter Program</b>	Los Angeles - Central City East (Skid Row)	Housing Specialist should contact Rosa Ayala at (213) 285-4260 Ext 5929 or Gustavo Arguelles at (323) 695-3084 for more information.	60 days at The Russ hotel emergency shelter (single room occupancy with shared bathroom): 3 meals daily. The Russ is located at 500 South San Pedro St, LA, CA 90013.	Referral Letter from Housing Specialist stating that the client has a history of mental illness and/or substance abuse, houselessness or on the verge of becoming unhoused. If client has a mental illness and is on medication, will need confirmation from medical provider. HIV+ diagnosis (form from medical provider): negative TB results (within last 12 months); COVID-19 vaccination card may be required: Negative COVID-19 test (within last few days of enrollment); Valid Photo ID/original Social Security Card: Income (bank statements for the last 3 months).





# City of Bell Gardens



# PLHA Rental Assistance Program



- ◆ **The City of Bell Gardens is now providing up to 12 months in rent subsidy to qualified renters at risk of homelessness.**
- ◆ **This assistance is made possible by the State’s PLHA (Permanent Local Housing Allocation) Program and the Los Angeles County Development Authority (LACDA).**
- ◆ **To be eligible, households must meet the following criteria:**
  1. **Have a minimum area median income (AMI) of 30%.**
  2. **Be able to contribute 60% or more of their total monthly income towards rent.**
- ◆ **Financial assistance will be in the form of a monthly rent subsidy paid directly to the landlord or property owner.**
- ◆ **Case management includes, but is not limited to, application review, housing stability assistance, homeless prevention, guidance with tracking expenses, managing bills, and prioritizing financial obligations.**
- ◆ **Assistance and funds will be available on a first-come, first-serve basis and until funds are depleted.**

To submit an application, please contact:

Community Family Service Center  
6662 Loveland Street  
Bell Gardens, CA 90201  
(562) 928-2000

Community Development Housing Division  
7100 Garfield Avenue  
Bell Gardens, CA 90201  
(562) 806-7700 Ext. 7257

2023 Income Limits

Number of Persons	Extremely Low-Income	Very Low-Income	Moderate-Income	Moderate-Income (120%)	Moderate-Income (150%)
1	\$26,500	\$52,980	\$70,650	\$105,900	\$109,000
2	\$30,300	\$60,540	\$80,750	\$121,050	\$124,600
3	\$34,100	\$68,100	\$90,850	\$136,200	\$140,150
4	\$37,850	\$75,660	\$100,900	\$151,300	\$155,700
5	\$40,900	\$81,720	\$109,000	\$163,450	\$168,200
6	\$43,950	\$87,780	\$117,050	\$175,550	\$180,650
7	\$46,950	\$93,840	\$125,150	\$187,650	\$193,100
8	\$50,000	\$99,900	\$133,200	\$199,750	\$206,110



You may also want to apply for the Los Angeles County Rental Assistance Program online as another option at:

[www.lacountyrentrelief.com](http://www.lacountyrentrelief.com)

Or call (877) 849-0770  
Monday – Sunday\*  
7:00 a.m.-7:00 p.m. PST  
\*Except for state and federal holidays

City of Bell Gardens  
7100 Garfield Ave.  
Bell Gardens, CA 90201

Postal Customer  
Bell Gardens  
CA 90201

Presorted Standard  
U.S. Postage PAID  
Permit #213  
Bell Gardens  
CA90201



# Ciudad de Bell Gardens



# Programa de Asistencia para el Alquiler de PLHA



- ♦ La Ciudad de Bell Gardens ahora está proporcionando hasta 12 meses en subsidios de alquiler a inquilinos calificados en riesgo de quedarse sin hogar.
- ♦ Esta asistencia es posible gracias al Programa del Estado PLHA (Programa de Asignación de Vivienda Local Permanente) y a la Autoridad de Desarrollo del Condado de Los Angeles (LACDA).
- ♦ Para ser elegibles, los hogares deben cumplir con los siguientes criterios:
  1. Tener un ingreso medio mínimo del área (AMI) del 30%.
  2. Ser capaz de contribuir con el 60% o más de sus ingresos mensuales totales para el alquiler.
- ♦ La asistencia financiera será en forma de un subsidio mensual de alquiler pagado directamente al arrendador o dueño de la propiedad.
- ♦ La administración de casos incluye, entre otros, la revisión de solicitudes, asistencia para la estabilidad de la vivienda, prevención de personas sin hogar, orientación con el seguimiento de gastos, administración de facturas y priorización de obligaciones financieras.
- ♦ La asistencia y los fondos estarán disponibles por orden de llegada y hasta que se agoten los fondos.

Para presentar una solicitud, por favor comuníquese al:

Community Family Service Center  
6662 Loveland Street  
Bell Gardens, CA 90201  
(562) 928-2000

Community Development Housing Division  
7100 Garfield Avenue  
Bell Gardens, CA 90201  
(562) 806-7700 Ext. 7257

Límites de Ingresos para 2023

Numero de Personas	Ingresos Extremadamente Bajos	Ingresos Muy Bajos	Ingresos Moderados	Ingresos Moderados (120%)	Ingresos Moderados (150%)
1	\$26,500	\$52,980	\$70,650	\$105,900	\$109,000
2	\$30,300	\$60,540	\$80,750	\$121,050	\$124,600
3	\$34,100	\$68,100	\$90,850	\$136,200	\$140,150
4	\$37,850	\$75,660	\$100,900	\$151,300	\$155,700
5	\$40,900	\$81,720	\$109,000	\$163,450	\$168,200
6	\$43,950	\$87,780	\$117,050	\$175,550	\$180,650
7	\$46,950	\$93,840	\$125,150	\$187,650	\$193,100
8	\$50,000	\$99,900	\$133,200	\$199,750	\$206,110



También puede aplicar para el Programa de Asistencia para el Alquiler del Condado de Los Angeles en línea como otra opción en:

[www.lacountyrentrelief.com](http://www.lacountyrentrelief.com)

O llame al (877) 849-0770

Lunes – Domingo

7:00 a.m.- 7:00 p.m. PST

\*excepto los días festivos estatales y federales

# HOMESHARE

*Matching Home Providers with Home Seekers*



**COUNTY of VENTURA**  
Human Services Agency  
Area Agency on Aging

HomeSharing is an alternative way of meeting housing needs that benefits renters and homeowners alike. Simply put, HomeSharing is an arrangement where two or more unrelated people share a dwelling, each having their own private space and sharing certain common areas. HomeSharers may arrange a regular rental payment, or exchange services to offset a portion or all of the rent. *No two HomeSharing situations are alike; each is tailored to the needs and preferences of the individual people involved.*



Ventura County HomeShare facilitates a more secure connection to area Home Seekers and Providers looking for an alternative option to many of today's housing and independent living challenges. Ventura County HomeShare *will not* dictate the terms of the HomeSharing arrangement but rather assists with screening candidates, links potentially successful matches, and offers guidance on the interview process. Ventura County HomeShare *will not* solve emergency housing needs but rather assist area residents with creating successful solutions to the high cost of care and housing in Ventura County.

## Who HomeShares?

Home Providers may be living in a house too large due to life changes or they may be finding it difficult to cope with maintaining a household alone. Home Seekers may be seniors, college students, newly single persons, professionals recently moved to the area or travelling, or anyone in need of lower-cost housing with an understanding of the benefits of sharing.

- HomeShare does not provide home health care. If an applicant needs a great deal of personal care or cannot be left unattended, this program is not appropriate. HomeSharers can provide companion care and household help, but it should be expected that seekers will have activities of their own, independent of the home provider.
- The process of matching is a careful and somewhat time-consuming one and is not a “quick fix.” It will take time for us to find suitable matches and for applicants to make careful decisions. People in need of short-term housing may apply, but many providers prefer a longer-term commitment and referral opportunities may be limited.
- Persons with convictions for felony or misdemeanor crimes involving bodily injury, assault, elder abuse, sexual offense, possession or distribution of an illegal substance, or theft or damage of personal property, are not eligible for the program. We can, however, assist people in finding community resources.

## The HomeShare Process

- 1) Complete and submit application materials.**
- 2) Profile preparation** including background checks for all participants and home inspections by staff, as needed.
- 3) Match referral** including phone interviews with staff, and potential HomeSharers.
- 4) Face-to-face meeting** of HomeSharers, with staff support as needed.
- 5) HomeShare agreement!** Once a match is made, Ventura County HomeShare suggests participants document their agreement. We can provide templates that participants can use to create their own personalized agreement.

The staff of Ventura County HomeShare acts only as a facilitator providing the opportunity for parties involved to come together and work out their own housing arrangements. It is the responsibility of the participants to determine whether referred individuals are found to be compatible. All final decisions regarding HomeSharing rest with the Seekers and Providers of housing.



# HOMESHARE

*Emparejar Proveedores de Vivienda con Solicitantes de Vivienda*



**COUNTY of VENTURA**  
Human Services Agency  
Area Agency on Aging

El programa de Compartiendo Vivienda (HomeSharing) es una forma alternativa de satisfacer las necesidades de vivienda que beneficia a inquilinos y propietarios por igual. Simplemente el programa de Compartiendo Vivienda es un arreglo donde dos personas o más no relacionadas comparten una vivienda, cada uno teniendo su propio espacio y comparten algunas áreas comunes. Los que comparten la vivienda pueden arreglar un pago de renta regular o intercambiar servicios para compensar parte de la renta o la renta total. *Ningún caso de Compartiendo Vivienda (HomeSharing) es igual; cada uno es de acuerdo con las necesidades y preferencias de las personas involucradas.*

El Programa del Condado De Ventura HomeShare (Compartiendo Vivienda) facilita una conexión más segura con los Solicitantes y Proveedores de Vivienda del área que buscan una alternativa a muchos de los desafíos actuales de vivienda y vida independiente. El Programa del Condado De Ventura HomeShare (Vivienda Compartida) no dictará los términos del acuerdo de HomeSharing, sino que ayuda a evaluar los candidatos, conecta coincidencias potencialmente exitosas, y ofrece orientación sobre el proceso de entrevistas. El Programa del Condado De Ventura HomeShare *no resolverá* las necesidades de vivienda de emergencia, sino que ayuda a los residentes del área a crear soluciones exitosas para el alto costo de la atención y la vivienda en el condado de Ventura.



## ¿Quién Comparte Casa?

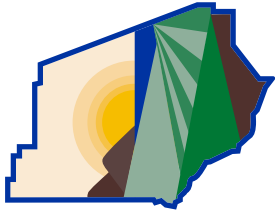
Los Proveedores de Hogar pueden estar viviendo en una casa demasiado grande debido a cambios en la vida o pueden tener dificultades para hacer frente al mantenimiento. Los solicitantes de vivienda pueden ser adultos mayores, estudiantes universitarios, personas recién solteras, profesionales que se han mudado recientemente a la zona o que están de viaje, o cualquier persona que necesite una vivienda de menor costo con una comprensión de los beneficios de compartir.

- El Programa de HomeShare (Vivienda Compartida) no proporciona atención médica en el hogar. Si un solicitante necesita una gran cantidad de cuidados personales o no se le puede dejar desatendido, este programa no es apropiado. Los que comparten vivienda (Home Sharers) pueden proporcionar cuidado de acompañantes y ayuda doméstica, pero se debe esperar que los solicitantes tengan sus actividades propias independientemente del proveedor de la vivienda.
- El proceso de emparejamiento es cuidadoso y requiere algo de tiempo y no es una “solución rápida”. Nos llevará tiempo encontrar coincidencias adecuadas y que los solicitantes tomen decisiones cuidadosas. Las personas que necesitan vivienda a corto plazo pueden solicitarlo, pero muchos proveedores prefieren un compromiso a largo plazo y las oportunidades de referencia pueden ser limitadas.
- Las personas con condenas por delitos graves o delitos menores que involucren lesiones corporales, agresión, abuso de adultos mayores, delitos sexuales, posesión o distribución de una sustancia ilegal, o robo o daño a la propiedad personal, no son elegibles para el programa. Sin embargo, podemos ayudar a las personas a encontrar recursos comunitarios.

## El Proceso de Compartir Vivienda (HomeShare)

- 1) **Complete y envíe los materiales de la solicitud.**
- 2) **Preparación del perfil**, incluidas las verificaciones de antecedentes de todos los participantes y las inspecciones de vivienda por parte del personal, según sea necesario.
- 3) **Referencias de coincidencias**, incluidas entrevistas telefónicas con el personal y posibles Compartidores de Vivienda (HomeSharers).
- 4) **Reunión cara a cara** de Compartidores de Vivienda (HomeSharers), con el apoyo del personal según sea necesario.
- 5) **¡Acuerdo de HomeShare!** Una vez que se hace una coincidencia, el programa de Ventura County HomeShare sugiere que los participantes documenten su acuerdo. Podemos proporcionar formas para que los participantes puedan usar para crear su propio acuerdo personalizado.

El personal del programa Ventura County HomeShare (Vivienda Compartida) actúa solo como un facilitador que brinda la oportunidad para que las partes involucradas se reúnan y resuelvan sus propios arreglos de vivienda. Es responsabilidad de los participantes determinar si las personas referidas son compatibles. Todas las decisiones finales con respecto a el programa de HomeSharing (Compartiendo Vivienda) recaen en los Solicitantes y Proveedores de vivienda.



# COUNTY of VENTURA

## Human Services Agency

# Resources

## for People Experiencing Homelessness

# Eastern Ventura County

Moorpark • Simi Valley  
Thousand Oaks

This information current as of  
**September 2022**

- Interface Children & Family Services – 4001 Mission Oaks Blvd, Camarillo ..... 800-485-6114 **Year-round Shelters**
- There are no year-round shelters in the Simi-Conejo area
- Gabriel's House (Women/Children), Oxnard ..... 805-487-3445
- Lighthouse Womens & Childrens Mission – Emergency Shelter Oxnard ..... 805-385-7200
- Our Place Shelter (mentally ill) – 538 E. Thompson Blvd, Ventura ..... 805-652-2151
- Salvation Army – Hope Center (single adults) ..... 805-648-4977
- Ventura County Rescue Mission (men only) ..... 805-487-1234
- **Winter Shelters**
- Simi Valley – P.A.D.S. (November–March) call for information ..... 805-579-9166
- Thousand Oaks – Conejo Valley Winter Shelter (December–March) – call for information ..... 805-464-3533

### SHOWERS/TOILETS

- VC Rescue Mission – 234 E. 6th St, Oxnard ..... 805-487-1234
- The Samaritan Center – 280 Royal Ave, Simi Valley (Monday–Thursday, 9 a.m.–noon) ..... 805-579-9166
- Lutheran Social Services of Southern CA – 80 E. Hillcrest Dr, #101, T.O. (Monday, Tuesday, Wednesday, Friday, 9 a.m.–4:30 p.m.) ..... 805-497-6207

### TRANSITIONAL HOUSING

- **6633** Center – 837 E. Thompson Blvd, Ventura ..... 805-628-8633
- Gabriel's House (The Kingdom's Center), Oxnard ..... 805-487-3445
- RAIN Transitional Living Center (families & singles) Call for application ..... 805-383-7505
- Sarah's House Maternity Home ..... 805-581-1910
- Tender Life Maternity Home – 871 E. Thompson Blvd, Ventura ..... 805-653-7474
- Veterans Transitional Housing facility in Ventura ..... 805-652-4000 x108
- 557 E. Thompson Blvd, Ventura ..... 805-652-4000 x108

### VETERANS SERVICES

- **Countywide**
- County of Ventura Veteran Services 2901 N. Ventura Road, 3rd Floor, Oxnard ..... 805-477-5155
- Department of Veterans Affairs – Outpatient Clinic Veterans Center – Counseling Services (Monday–Friday, 8 a.m.–4:30 p.m.) 4440 Calle Real, Santa Barbara ..... 805-683-1491
- Disabled Veterans Outreach (EDD) ..... 805-288-8400
- Gold Coast Veterans Foundation 4001 Mission Oaks Blvd, #D, Camarillo ..... 805-482-6550
- VA Oxnard Community-Based Outpatient Clinic 1690 Universe Circle, Oxnard ..... 805-204-9135
- Ventura Vet Center (Counseling) 790 E. Santa Clara St, #100 ..... 805-585-1860
- Veterans Home of California – Ventura 10900 Telephone Rd, Ventura ..... 805-659-7502
- Veteran Transitional Housing – Ventura ..... 805-652-4000

### Mo orpark

- Community Services Center (Ruben Castro Human Services Center) 612 Spring Rd, Bldg B, #301 Walk-in hours – Fridays, 9 a.m.–1 p.m.

- **MEDICAL**
- Health Care for the Homeless/Transition Clinic 3147 Loma Vista Rd, Ventura ..... 805-652-6694
- Whole Person Care ..... 805-339-1122
- **Mo orpark**
- Moorpark Family Care Center – 612 Spring Rd ..... 805-523-5400
- Ventura County Public Health ..... 805-981-5271 or call Toll Free ..... 888-285-5021
- Medical Therapy for Children – 2250 N. Tracy Ave Public Health Clinic – 1133 E. Los Angeles Ave, #B 1227 E. Los Angeles Ave ..... 805-582-4000
- Sierra Vista Family Medical Clinic Free Clinic of Simi Valley – 2003 Royal Ave (Tuesdays, 9 a.m.–1 p.m.) ..... 805-522-3733
- Simi Valley Hospital – 2975 Sycamore Dr. .... 805-955-6000
- **Thousand Oaks**
- Conejo Valley Family Medical Group 125 W. Thousand Oaks Blvd, #300 ..... 805-418-9100
- Los Robles Hospital & Medical Center – 215 W. Janss Rd ..... 805-497-2727
- Westminster Free Clinic at the United Methodist Church – 1000 E. Janss Rd (Wednesdays, 4–10:30 p.m.; first-come, first-served) ..... 805-241-8366

### MENTAL HEALTH

- **Countywide**
- Adult Crisis Team – 24-hour Hotline ..... 866-998-2248
- Children's Intensive Response Team (for children & youth to 21 years old) ..... 866-431-2478
- Behavioral Health Administration 1911 Williams Dr, #200, Oxnard ..... 805-981-6830
- NAMI – National Alliance on Mental Illness (Support/Advocacy) ..... 805-641-2426
- STAR (Access to Mental Health Services)/Crisis 1911 Williams Dr, #200, Oxnard ..... 805-981-4233
- **Simi Valley**
- Ventura County Behavioral Health Clinic – 1227 E. Los Angeles Ave (also serves Moorpark) ..... 805-582-4075
- **Thousand Oaks**
- Conejo Behavioral Health Clinic 125 W. To Blvd, #500, TO ..... 805-777-3500

### SENIOR CITIZENS SERVICES

- 24-hour Helpline ..... dial 2-1-1
- Adult Protective Services (abuse/neglect) ..... 805-654-3200
- Area Agency on Aging 646 County Square Dr, #100, Ventura ..... 805-477-7300
- Mental Health, Older Adult Services 5740 Rakston St, Ventura ..... 805-289-3203
- Outreachman Services (visit nursing homes) ..... 805-656-1886
- Senior Nutrition (meal site information) ..... 805-477-7300

### SHELTERS

- **Domestic Violence Shelters**
- Coalition for Family Harmony – 24-hour Hotline ..... 805-656-1111
- Toll Free 24-hour Hotline ..... 800-300-2181 TTY ..... 805-656-4439

- **Simi Valley**
- America's Job Center – 2900 N. Madera Rd, #100 Walk-in hours – Wednesdays, 8 a.m.–4 p.m.
- Simi Valley Senior Center – 3900 Avenida Simi 1st Wednesday 9 a.m.–noon – by appointment only ..... 805-583-6363
- **Thousand Oaks**
- Supervisor Linda Parks' Office – 625 W. Hillcrest Dr Thursdays, 9 a.m.–12 noon – by appointment only
- Thousand Oaks Senior Center – 1385 E. Janss Rd Walk-in hours – 2nd Tuesday, 1:30–4 p.m.
- **YOUTH SERVICES**
- Interface Youth Rescue Line ..... 805-469-5882
- Independent Living Program (former Foster Youth) ..... 805-289-1990 or 805-385-9174
- Transition Age Youth (TAY Tunnel) – 141 W. 5th St, #D, Oxnard ..... 805-240-2538
- Youth & Teens National Runaway Satellite – 24-hour Hotline ..... 800-RUN-AWAY
- Transitions (VC Behavioral Health) ..... 805-981-9270

Most of the agencies listed can offer only limited, temporary assistance depending on available funds. Refer to the Western Ventura County Resources brochure for resources available in other regions of the County.

Please email updated listings to  
hlsa.communications@ventura.org



# COUNTY of VENTURA

## Human Services Agency

This brochure was prepared by:  
County of Ventura Human Services Agency  
Homeless Services Program

**805-385-1800**  
**www.vchsa.org**



## ALCOHOL & DRUG SERVICES

- 24-hour Helpline ..... dial 2-1-1
- County Alcohol/Drug Line ..... 805-981-9200
- Alcoholics Anonymous - Countywide Information ..... 805-389-1444
- Español (Spanish) ..... 805-988-0329 • Al-Anon of Ventura County ..... 805-253-7188
- Simi Valley Center - 3150 Los Angeles Ave ..... 805-577-1724
- Khepera House (men) treatment ..... 805-648-2652
- 150 W. Harrison St., Ventura ..... 805-385-7200
- Lighthouse for Women & Children ..... 805-482-1265
- 150 N. Hayes Ave., Oxnard ..... 805-382-6296
- Palmer Drug Abuse Program ..... 805-382-6296
- Prototypes Women's Center ..... 805-382-6296
- 2150 N. Victoria Ave., Oxnard ..... 805-436-4693
- Ventura County Rescue Mission (men) ..... 805-648-3295
- 234 E. 6th St., Oxnard ..... 805-581-2599
- Ventura/Tri-Counties Teen Challenge ..... 805-648-3295
- 6790 N. Ventura Ave., Ventura ..... 805-581-2599
- Victory Outreach Church - 3701 Alamo St., Simi Valley ..... 805-581-2599

## BENEFITS

- Human Services Agency (CalWORKS, General Relief, CalFresh/Food Stamps), Medi-Cal ..... 888-472-4463
- Simi Valley - 2900 N. Madera Rd ..... 805-584-4842
- Moorpark - 612 Spring Rd, Bldg B, #301 ..... 805-523-5444
- Thousand Oaks - 80 E. Hillcrest Dr, #200 ..... 805-449-7320
- Social Security Administration ..... 800-772-1213 or TTY 800-325-0778
- T.O. Office - 322 Thousand Oaks Blvd ..... 800-772-1213
- State of California Employment Development Department (EDD) - Unemployment ..... 800-772-1213
- The U.S. Self-Service phone line is available 24/7 at: ..... 866-333-4606
- English/Spanish ..... 800-300-5616
- Cantonese ..... 800-547-3506
- Mandarin ..... 866-303-0706
- Vietnamese ..... 800-547-2058
- TTY (non-voice) ..... 800-815-9387

## BUS

- Dial-A-Ride (Thousand Oaks) ..... 805-375-5467
- Connect City-to-City East County Transit Alliance
- Gold Coast Transit ..... 805-487-4222
- Greyhound Bus ..... 800-231-2272
- Moorpark City Transit ..... 805-375-5473
- Simi Valley Transit ..... 805-583-6464
- Ventura County Transportation Commission - VCTC InterCity Transit ..... 800-438-1112

## CAMPGROUNDS/CAMPING

- Ventura County Parks Dept Online Reservations ..... 805-654-3351
- California State Parks - online camping reservations ..... 800-444-PARK (7275) - TDD: 800-274-7275
- Moorpark - Happy Camp Canyon Park ..... 805-654-8444
- 14105 Broadway Ave ..... 805-654-3951
- Simi Valley - Oak Park - 901 Quinnsa Dr ..... 805-654-3951
- Tapo Canyon Regional Park - 4651 Tapo Canyon Rd ..... 805-654-3700

## CHILDREN'S SERVICES

- Children's Crisis Team - 24-hour Hotline ..... 866-431-2478
- Child Development Resources (CDR) (childcare, Head Start) ..... 805-485-7878
- Children & Family Services (abuse, adoption, foster care) ..... 805-955-2290
- Children's Medical Services ..... 805-981-5281
- 5291 • CCS - California Children's Services ..... 805-981-5281
- 2240 E. Gonzales Rd, #260, Oxnard ..... 805-437-1559
- Homeless Education Project - 5189 Verdugo Way, Camarillo ..... 805-641-1678
- School on Wheels Inc. - 83 S. Palm St., Ventura ..... 805-641-1678

## CITIZENSHIP/IMMIGRATION

- Concordio Family Services - 301 S. C St., Oxnard ..... 805-486-9777
- U.S. Citizenship & Immigration Services ..... Toll Free 866-559-9191
- 2000 Outlet Center Dr, #200, Oxnard ..... 888-418-3053

## CLOTHES

- Catholic Charities - Moorpark Panty Plus ..... 805-529-0720
- 612 Spring Rd, #101 ..... 805-529-0720
- Lutheran Social Services ..... 805-497-6207
- 80 Hillcrest Dr #101, Thousand Oaks ..... 805-497-6207
- Samaritan Center - 280 Royal Ave, Simi Valley ..... 805-579-9166
- (Monday-Thursdays, 7-11 a.m.)

## DENTAL

- Child Health & Disability Prevention (CHDP) ..... 805-981-5291
- 2240 E. Gonzales Rd, #270, Oxnard ..... 805-981-5291
- Clinics Del Camino Real, Inc (by appointment only) ..... 805-498-7291
- Newbury Park - 1000 Newbury Rd, #150 ..... 805-522-5722
- Simi Valley - 1424 Madera Rd ..... 805-522-5722
- Free Clinic of Simi Valley (call for appointment) ..... 805-522-3733
- Salvation Army Dental Services - 622 W. Wooley Rd, Oxnard ..... 805-483-9235
- (call for appointment)

## DISABLED PERSONS

- Department of Rehabilitation ..... 805-371-6279
- 101 Hodocamp Rd, #212, Thousand Oaks ..... 805-371-6279
- Rehabilitation Living Resource Center - 702 County Square Dr, #103; Voice/Fax (TTY) 805-650-5993 video phone ..... 805-256-1036
- 886 Counties Regional Center - 2635 Park Center Dr, Simi Valley ..... 805-522-3733

## DOMESTIC VIOLENCE

- Child/Adult Abuse & Neglect 24-hour Hotline ..... 805-654-3351
- Coalition for Family Harmony ..... 805-656-1111
- 24-hour Bilingual Hotline ..... 800-300-2181
- Interface Children & Family Services ..... 800-636-6738
- Interface Youth Crisis Outreach Program ..... 805-469-5882
- 4001 Mission Oaks Blvd, #1, Camarillo

## 805-385-1800

County of Ventura Human Services Agency • Homeless Services Program

## DROP-IN SERVICES

- ARC Ventura County - 5143 Cochran St., Simi Valley ..... 805-520-0999
- One-Stop Center - Church of the Nazarene - 2280 Antonio Ave, Camarillo ..... 805-652-6694
- (4th Thursday, 8:30-11 a.m.)
- Samaritan Center - 280 Royal Ave, Simi Valley - showers, mail, clothing messages, job coaching (Monday-Thursdays, 9 a.m.-noon) ..... 805-579-9166

## HEALTH CARE

- Sierra Vista Urgent Care - 1227W. Thousand Oaks Blvd, #200 ..... 805-520-3296
- Westminister Community Care Center ..... 805-241-8566
- 1000 E. Jarvis Rd, Thousand Oaks
- Employment Services - East County ..... 805-955-2282
- 2900 N. Madera Rd, Simi Valley ..... 805-529-0720
- Catholic Charities Careers - 612 Spring Rd, #101, Moorpark ..... 805-529-0720
- California Conservation Corps - 3200 Wright Rd, Camarillo ..... 805-278-3543
- Community Concierge - 80 E. Hillcrest Dr, T.O. .... 805-494-3543
- Goodwill Industries of Ventura & Santa Barbara Counties ..... 805-526-5570
- 5145 E. Los Angeles Ave, Simi Valley
- Job Corps - Education - Work - 612 Spring Rd, #101, Moorpark ..... 805-529-0720
- PathPoint - 1463 E. Los Angeles Ave, Simi Valley ..... 805-520-8744
- Simi Valley Youth Employment Service ..... 805-522-4473
- 3855-A Alamo St., Simi Valley

## FOOD (also see Meals)

- FOOD Share - countywide food pantry (call for referral in your area) ..... 805-983-7100
- Sigma Conejo Valley Food Bank - 3020 Crescent Way, T.O. .... 805-497-1296
- (Tuesday, 9:30 a.m.-2:30 p.m.; Thursday, 9:30 a.m.-3:30 p.m.; Saturday, 9:30 a.m.-12:30 p.m.)
- WIC (women, infants, children) ..... 805-981-5251
- or call Toll Free ..... 800-781-4449 #3
- 1133 E. Los Angeles Ave, #B, Simi Valley
- 125 W. Thousand Oaks Blvd, Thousand Oaks

## FOOD

- Catholic Charities - 612 Spring Rd, #101 ..... 805-529-0720
- (Monday-Thursdays, 9 a.m.-1:30 p.m.; Saturday, 9 a.m.-1 p.m.)
- Simi Valley
- Salvation Army - 1407 E. Los Angeles Ave, #P ..... 805-527-1070
- (Monday-Thursdays, 10 a.m.-2 p.m.)
- Samaritan Center (call for information) - 280 Royal Ave ..... 805-579-9166

## HOUSING

- Christian Church of Thousand Oaks - 301 Avenida de los Flores (1st & 3rd Mondays 4-6 p.m.) ..... 805-492-2474
- Harbor House (by appointment only) ..... 805-464-3533
- Lutheran Social Svcs - 80 E. Hillcrest Dr, #101 ..... 805-497-6207
- Many Mansions/Hacienda de Feliz - 2084 Los Feliz Dr (2nd Saturday/month, 10 a.m.-12 noon) ..... 805-557-2723

## HOUSING/HOMELESS SERVICES

- Area Housing Authority (does NOT provide emergency housing) ..... 805-480-9991
- 1400 W. Hillcrest Dr, Newbury Park
- Cabrillo Economic Development Corporation (affordable housing) ..... 805-659-3791
- Harbor House (by appointment only) ..... 805-464-3533
- Housing Rights Center ..... 800-477-5977; TTY 213-201-0867
- Catholic Charities - 612 Spring Rd, #101, Moorpark ..... 805-529-0720
- Homeless Prevention & Rental Deposit ..... 805-385-1800
- Lutheran Social Services of Southern California ..... 805-497-6207
- 80 E. Hillcrest Dr, #101, Thousand Oaks
- Many Mansions/Housing Central - 1425 E. Thousand Oaks Blvd, T.O. (Monday-Friday, 8:30 a.m.-4:30 p.m.) ..... 805-496-4948
- Mental Health Housing /STAR ..... 866-998-2243
- Salvation Army - Hope Center ..... 805-648-4977
- Samaritan Center - 280 Royal Ave, Simi Valley (mornings Monday-Thursdays) ..... 805-579-9166

## INFORMATION AND REFERRAL

- Dial 2-1-1 for information 24 hours/7 days/week about Community Resources near you ..... 805-477-7300
- Area Agency on Aging (seniors) ..... 800-660-5474
- County of Ventura ..... 805-385-1800
- Homeless Services Program Information

## LAUNDRY

- Lutheran Social Services of Southern CA (Monday, Tuesday, Wednesday, Friday, 9 a.m.-4:30 p.m.) ..... 805-497-6207
- 80 E. Hillcrest Dr, #101, T.O.
- Samaritan Center - 280 Royal Ave, Simi Valley (Monday-Thursdays, 7-11 a.m.) ..... 805-579-9166

## LEGAL SERVICES

- Conejo Free Clinic - 80 E. Hillcrest Dr, #102, Thousand Oaks (call for information) ..... 805-497-3575
- Free Clinic of Simi Valley - 2060 Tapo St, (by appointment only) ..... 805-522-3733
- Simi Valley Court's Family Law Self-Help Center ..... 805-289-8733
- 3855-F Alamo St, 2nd floor
- Ventura Superior Court - Self-Help Legal Access Center ..... 805-289-8724
- 800 S. Victoria Ave, Rm #106, Ventura

## Countywide Legal Services

- California Rural Legal Assistance - 338 S. A St., Oxnard ..... 805-486-1068
- Grey Law (60 yrs.+)- Pleasant Valley Recreation & Park District ..... 1605 Burnley St, Camarillo
- Make a free appointment ..... 805-658-2266
- Housing Rights Center ..... 800-477-5977

## MAIL/MESSAGES

- Moorpark - Catholic Charities - 612 Spring Rd, #101 ..... 805-529-0720
- Simi Valley - Samaritan Center - 280 Royal Ave (mornings) ..... 805-579-9166
- Thousand Oaks - Lutheran Social Services ..... 805-497-6207
- 80 E. Hillcrest Dr, #101

## MAIL/MESSAGES

**Oxnard**  
• Community Action Program of Ventura County  
621 Richmond Ave .....805-436-4000

**Ventura**  
• Catholic Charities – 303 N. Ventura Ave. ....805-643-4694  
• Turning Point Foundation (mentally ill)  
536 E. Thompson Blvd. ....805-652-2151

**MEALS** (also see Food)

• Rescue Mission – 6th & Meta, Oxnard – Dinner 5:30–6 p.m.  
(Monday–Friday, 11–11:30 a.m. and Saturday, 12–12:30 p.m.)  
• Many Meals – 121 Davis St., Santa Paula – Wednesday, 5–6 p.m.  
• Family to Family – 303 N. Ventura Ave., Ventura  
(Monday, Wednesday, Friday, 11 a.m.–noon and  
Saturday, Sunday, 8–9 a.m.)

## MEDICAL

• Health Care for the Homeless .....805-652-6694  
• Whole Person Care .....805-339-1122  
email: .....wholepersoncare@ventura.org

## Countywide

• Children's Medical/Dental Services .....805-652-

5960

• Ventura County Medical Center (VCMC)  
300 Hillmont Ave., Ventura .....805-652-6000

## Oxnard

• Clinicas del Camino Real – 650 Meta St. ....805-487-

5351

• Las Flores Women's Ctr – 2400 S. C St. ....805-240-7000  
• Las Islas Medical Clinic – 325 W. Cl Blvd. ....805-240-9500  
• Public Health Clinic – 2500 S. C St. #D .....805-385-9451  
• Salvation Army – 622 W. Wooley Rd. – free clinic  
(Monday & Thursday) .....805-483-9235

## Santa Paula

• Agripa Paula Hospital – 825 N. 10th St. ....805-933-

**Ventura**

• Clinicas del Camino Real – (dental & medical)  
200 S. Wells Rd .....805-647-6322  
• Public Health Clinic – 3147 Loma Vista Rd. ....888-285-5012

## MENTAL HEALTH

• Crisis Team – 24-hour Hotline .....866-998-2243  
• Rise Team/OD line .....805-981-4233  
• Mental Health Liaison .....805-981-4227  
Bilingual Liaison .....805-981-3331  
• NAMI (Support/Advocacy)  
5251 Verdugo Way, #K, Camarillo .....805-641-2426  
• STAR (Access to Mental Health Svcs) .....866-998-2243  
• Turning Point Foundation  
New Visions Center 1065 E. Main, Va  
Oxnard Club House – 426 W. 5th St. ....805-652-0596  
• Ventura County Mental Health Services  
4258 Telegraph Rd., Ventura .....805-477-5700  
1911 Williams Dr., Oxnard .....805-981-4200  
2500 S. C St., #C, Oxnard .....805-385-9420  
725 W. Main St., 3rd floor, Santa Paula .....805-933-8480

## SENIOR CITIZENS SERVICES

• 24-hour Helpline .....dial 2-1-1  
• Adult Protective Services (abuse/neglect) .....805-654-3200  
• Area Agency on Aging .....805-654-3200  
• 646 County Square Dr., #100, Ventura .....805-477-7300  
• Mental Health, Older Adult Services .....805-777-3500  
• Ombudsman Services (visit nursing homes) .....805-656-1988  
• Senior Nutrition (meal site information) .....805-477-7300

## SHELTERS

### Domestic Violence Shelters:

• Coalition for Family Harmony .....805-654-1111  
• Spanish Hotline .....800-300-2181  
• Interface Children & Family Services .....805-485-6114

### Year-Round Shelters

• Mercy House: Oxnard Navigation Center + The Arch .....805-399-

9099

• Rescue Mission – (men only) 234 E. 6th St., Oxnard .....805-487-  
• Salvation Army – Hope Center (single adults) .....805-648-

4977

• Turning Point Foundation – Our Place Shelter (mentally ill)  
536 E. Thompson Blvd., Ventura .....805-652-2151  
• Women's Shelter – (women & children) .....805-385-  
• Women's Shelter/Kingdom Center, Oxnard .....805-487-

3445

### Winter Shelters – (December–March)

• Ojai Valley Family Shelter (call for information) .....805-804-

7094

• Temporary Emergency Shelter (call for information) .....dial 2-1-

## SHOWERS/TOILETS

• Community Action Program of Ventura County  
621 Richmond, Oxnard .....805-436-4000

### Our Place Shelter (mentally ill)

536 E. Thompson Blvd., Ventura .....805-652-2151  
• Rescue Mission – 234 E. 6th St., Oxnard .....805-487-

## TRANSITIONAL HOUSING

• City Center – 837 E. Thompson Blvd., Ventura .....805-628-  
• Kingdom Center (Gabriel's House) 1450 Rose Ave., Oxnard .....805-487-

3400

• Lighthouse Family Center, Oxnard .....805-385-7200  
• RAIN Transitional Living Center (families & singles)  
Call for an application .....805-383-7505  
• Tender Life Maternity Home .....805-653-7474  
• Turning Point Countywide Supported Housing  
River Haven (Ventura) .....805-652-2151  
Venturas Transitional Housing (Ventura) .....805-652-0000x102

## VETERANS SERVICES

• County of Ventura Veteran Services  
2901 N. Ventura Road, 3rd Floor, Oxnard .....805-477-5155  
• Department of Veterans Affairs – Outpatient Clinic  
Veterans Center – Counseling Services (Monday–Friday, 8 a.m.–4:30 p.m.)  
1690 Universe Ct., Oxnard .....805-204-9135  
• Disabled Veterans Outreach (EDO) .....805-288-

8400

• Gold Coast Veterans Foundation  
4001 Mission Oaks Blvd., #D, Camarillo .....805-482-6550  
Walk-in hours – Wednesdays, 8 a.m.–4 p.m.

• Ventura Veterans Center (Counseling)  
790 E. Santa Clara St., #1000 .....805-585-1860  
• Veterans Home of Ventura – 10900 Telephone Rd., Ventura .....805-659-  
7502 • Veterans Transitional Housing (Ventura) .....805-652-  
0000x102

## YOUTH SERVICES

• Interface Youth Rescue Line – 24-hour Hotline .....805-469-  
5882  
• Independent Living Prog (former Foster Youth) .....805-654-  
3245  
• Pacific Clinics – Transition Aged Youth (TAY Tunnel)  
141 W. 5th St., #D, Oxnard .....805-240-2538  
• Teen Runaway Helpline .....800-RUN-AWAY  
• Transitions (Ventura County Behavioral Health) .....805-981-

6830

Toll Free .....866-998-2243

# COUNTY of VENTURA

Human Services Agency



## Resources

for People Experiencing  
Homelessness

# Eastern Ventura County

Camarillo • Fillmore • Ojai • Oxnard  
Port Hueneme • Santa Paula • Ventura

This information current as of  
**September 2022**



COUNTY of VENTURA  
Human Services Agency

This brochure was prepared by:  
County of Ventura Human Services Agency  
Homeless Services Program

**805-385-1800**

**www.vchsa.org**

56-15-069 9/22

Most of the agencies listed can offer only limited, temporary assistance, depending on available funds. Refer to the Eastern Ventura County Resources brochure for resources available in other regions of the county.

Please email updated listings to  
hsa.communications@ventura.org

**ALCOHOL & DRUG SERVICES**

- 24-hour Helpline ..... dial 2-1-1
- County Alcohol/Drug Line ..... 805-981-9200
- Alcoholics Anonymous - Countywide Information ..... 805-389-1444
- Español (Spanish) ..... 805-988-0329
- Anon of Ventura County ..... 805-495-0270
- Oxnard Center - 1911 Williams Dr ..... 805-981-9200
- Ventura Center - 5850 Thille St, #205 ..... 805-652-6919
- Knepera House - 330 N. Ventura Ave, Via ..... 805-653-2596
- Lighthouse Recovery ..... 805-385-7200
- New Start for Moms - 1911 Williams Dr, Oxnard ..... 805-981-9250
- 9250 • Palmer Drug/Alcohol Abuse Program ..... 805-382-6296
- 2150 N Victoria Ave, Oxnard ..... 805-487-1234
- Rescue Mission (men) - 234 E. 6th St, Oxnard ..... 805-648-3295
- Teen Challenge ..... 805-293-9182
- Victory Outreach - 2875 Elba St, Ventura ..... 805-293-9182

**BENEFITS**

- Human Services Agency - CalWORKS, General Relief, CalFresh Stamps, Medi-Cal
- Oxnard, Port Hueneeme, Camarillo
  - 1400 Vanguard Dr, Oxnard ..... 805-385-9363
  - Santa Paula - 725 E. Main ..... 805-933-8300
  - Fillmore - 828 Ventura St, #200 ..... 805-524-8666
- Ventura & Ojai
  - 4651 Telephone Rd, #100, Ventura ..... 805-658-4100
  - Social Security Administration ..... 800-772-1213
- Oxnard - 2000 Outlet Center Dr, #250
- Ventura - 6477 Telephone Rd, #1
  - Unemployment Benefits Claims - English ..... 800-300-5616
  - Spanish ..... 800-326-8937

**BUS**

- 114V/Dial-A-Ride ..... 805-485-2319 or 800-488-Information ..... 800-438-1112
- Gold Coast Transit - Countywide Transportation Information ..... 805-988-4228
- Camarillo Area Transit ..... 805-524-2319
- Fillmore Area Transportation Corporation ..... 805-524-2319
- Greyhound Bus - 201 E. 4th St, Oxnard ..... 805-487-2707

- Information ..... 800-231-2222
- Gold Coast Transit - Ventura ..... 805-643-3158
- Oxnard ..... 805-487-4222
- Heritage Valley Dial-A-Ride ..... 805-933-2267
- VCTC Bus Passes ..... 800-438-1112
- Oxnard Transit Center ..... 805-487-4222
- Camarillo City Hall ..... 805-388-5300
- Santa Paula City Hall ..... 805-933-4201
- Fillmore City Hall ..... 805-524-3701

**CAMPGROUNDS/CAMPING**

- County Park Information ..... 805-654-3951
- State Park Information ..... 800-444-7275/805-968-1033
- Fillmore - Kenny Grove - 823N. Oak ..... 805-524-0750
- Ojai - Lake Casitas - 11311 Santa Ana Rd ..... 805-649-2233

- County Beach/Park Campgrounds (14 days maximum)
  - Ojai - Camp Comfort - 11969 N. Creek Rd ..... 805-654-3951
  - Dennison Park - 7250 Santa Paula/Ojai Rd ..... 805-654-3951
  - Santa Paula - Steedel Park ..... 805-654-3951
  - Ventura - Emma Wood - Rincon Parkway, Hwy 1 ..... 805-654-8444
  - Faria Beach - 4350W. PCH ..... 805-654-3951
  - Foster Park - 438 Casitas Vista Rd ..... 805-654-3951
  - Hobson Park - 5210 W. PCH ..... 805-654-3951
  - Lake Casitas - 11311 Santa Ana Rd ..... 805-649-2233
  - State Beach Campgrounds
    - 916-445-9949
    - TTY 916-445-8952

**CHILDREN'S SERVICES**

- California Children's Services - VC HCA ..... 805-981-5281
- Children's Crisis Team - 24-hour Hotline ..... 1-866-431-2478
- Child Development Resources (CDR) (childcare, Head Start Preschool) ..... 805-485-7878
- Children & Family Services (abuse/neglect, adoption, foster care)
  - 24-hour Hotline ..... 805-654-3200
  - Children's Mental Health (access line) ..... 800-671-0887
  - County Schools Homeless Education Project ..... 805-437-1522
  - School on Wheels (tutoring/supplies) ..... 800-923-1100

**CITIZENSHIP/IMMIGRATION**

- El Concilio Del Condado - 301 S. St, Oxnard ..... 805-486-9777 x232
- U.S. Citizenship and Immigration Services ..... 800-375-5283
- TTY 800-767-1833

**DENTAL**

- Children - referrals from CHDP ..... 805-981-5291
- Children's Resource Program - 199 Figueroa St ..... 805-641-9802
- Clinicas Del Camino Real (fee for services)
  - Oxnard - 650 Meza St ..... 805-483-3600
  - Santa Paula - 500 E. Main St ..... 805-933-0895
  - Ventura - 200 S. Wells Rd ..... 805-659-0560
- Oxnard Dental Group ..... 805-278-9499
- Salvation Army Free Clinic - 622 W. Wooley Rd, Oxnard (Call for appointment) ..... 805-483-9235

**DISABLED PERSONS**

- Department of Rehabilitation
  - 1701 Pacific Ave, #120, Oxnard ..... 805-385-2400
  - Independent Living Resource Center
    - 1802 Eastman Ave, #112, Ventura ..... 805-650-5993
    - Voice/Fax (TTY) 805-650-5993 Video phone ..... 805-256-1036
  - Tri-Counties Regional Center
    - 2401 E. Gonzales Rd, #100, Oxnard ..... 805-485-3177

**DOMESTIC VIOLENCE**

- Adult & Child Abuse & Neglect - 24-hour Hotline ..... 805-654-3200
- 24-hour Bilingual Hotline ..... 800-300-2181
- Coalition for Family Harmony ..... 805-654-1111
- Interface Children & Family Services ..... 800-636-6738

**805-385-1800**

County of Ventura Human Services Agency • Homeless Services Program

**DROP-IN SERVICES**

- Community Action Program of Ventura County
  - 621 Richmond Ave, Oxnard ..... 805-436-4000
  - Ojai Community Assist Program - 108 Fox St, Ojai ..... 805-640-3320
  - One-Stop Centers ..... 805-652-6694
  - Camarillo - Church of the Nazarene
    - 280 Antonio Ave (4th Thursday, 8:30-11 a.m.)
    - Oxnard - The Salvation Army, 622 W. Wooley Rd (Wednesday, 8:30-11 a.m.)
    - Santa Paula - Buen Pastor Church, 1029 E. Santa Paula St (Friday, 9-11:30 a.m.)
  - Ventura - Public Health Auditorium, 3147 Loma Vista (10 a.m.-12:30 p.m.)
  - River Haven - Harbor Blvd & Olivias Park Dr (Monday, 12:30-3:30 p.m.)

**EMPLOYMENT/JOB TRAINING**

- Applicant's Job Center - 2901 N. Ventura Rd, Oxnard ..... 805-204-
- Center for Employment Training (CET) - 761 S. St, Oxnard ..... 805-487-9821
- Community Action of VC - 621 Richmond, Oxnard ..... 805-436-4000
- Employment Development Department (EDD)
  - 2901 N. Ventura Rd, Oxnard ..... 805-288-8400
  - Employee Aptitude & Placement
- 660 N. Ventura Ave, Ventura (Monday-Friday, 9-11 a.m.) ..... 805-648-5868
- Fillmore Active Adult Center ..... 805-933-8300
- 533 Santa Clara St, Fillmore ..... 805-981-
- Goodwill Industries - 130 Lombard St, Oxnard ..... 805-981-0130
- Job Corps (16-24-year olds) ..... 800-733-5627
- Ojai Community Assist Program - 108 Fox St, Ojai ..... 805-640-3320
- Santa Clara Valley Community Service Center
  - 725 E. Main St, #301, Santa Paula ..... 805-933-8300
  - Unemployment Benefits Claims - English ..... 800-300-5616
  - Spanish ..... 800-326-8937
- Ventura Community Service Center - 4651 Telephone Rd ..... 805-454-
- Workforce Development Board (WDB)
  - 2901 N. Ventura Road, 3rd floor, Oxnard ..... 805-477-5306

**FOOD**

- Food Share - countywide food pantry information ..... 805-983-
- Community Action of VC - 621 Richmond, Oxnard ..... 805-436-4000
- Community Assistance of Santa Paula (CASP)
  - 133 N. Mill St (Monday) ..... 805-525-8880
  - Community Assist Program - 108 Fox St, Ojai ..... 805-640-
  - Spirit of Santa Paula (call first) ..... 805-340-5025
  - WIC (women, infants, children) ..... Toll Free 800-781-4449

**HOMELESS & HOUSING SERVICES**

- Cabrillo Economic Development Corporation (affordable housing)
  - 702 County Square Dr, #100, Ventura ..... 805-659-3791
  - 287 Riverpark Blvd, Oxnard ..... 805-485-2260
- Community Action Program - 621 Richmond, Oxnard ..... 805-436-4000
- Housing Rights Center ..... 800-477-5977
- Homeless Prevention & Rental Deposit ..... 805-385-1800
- Many Mansions - Housing Central ..... 805-497-0344
- Mental Health Housing/STAR ..... 866-998-2243

- Project Understanding - 7734 Johnson Dr, #E ..... 805-652-1326
- St. Vincent de Paul ..... 805-487-1558
- The Salvation Army, Safe Sleep (Ventura) ..... 805-648-5032
- Turning Point Foundation (mentally ill) ..... 536 E. Thompson Blvd, Ventura ..... 805-652-2151

**HOUSING AUTHORITIES**

- No emergency housing provided)
  - Housing Rights Center ..... 800-477-5977
  - Area Housing Authority (Ojai & unincorporated areas)
  - 1400W. Hillcrest Dr, Newbury Park ..... 805-480-9991
  - Oxnard Housing Authority - 435 S. D St ..... 805-385-8041
  - Public Housing ..... 805-385-8114
  - Section 8 ..... 805-385-8097
  - Port Hueneeme Housing Authority
    - 250 N. Ventura Rd ..... 805-986-6527
    - Santa Paula Housing Authority
      - 15500W. Telegraph Rd, #811 ..... 805-525-3339
      - Ventura Housing Authority
        - Public Housing - 995 Riverside St ..... 805-648-5008
        - Section 8 - 11222 Snapdragon St, #100 ..... 805-647-5990

**INFORMATION AND REFERRAL**

- Dial 2-1-1 for information 24 hours/7 days/week about Community Resources near you
- Area Agency on Aging (seniors) ..... 805-477-7300
- County of Ventura ..... 800-660-5474
- Homeless Services Program Information ..... 805-385-1800

**LAUNDRY**

- Community Action Program of Ventura County
  - 621 Richmond, Oxnard (Monday & Friday only, 8 a.m.-noon) ..... 805-436-4000
- Community Assistance Program
  - 108 Fox St, Ojai ..... 805-640-3320
  - Laundry of Love - Ventura County ..... 805-642-3262
  - Mission Plaza - 110 N. Olive - 1st Tuesday, 5:30-8 p.m.
  - Quik Wash - 9298 Telephone Rd - 2nd Tuesday, 5-7 p.m.
  - 2611 E. Thompson Blvd. - 3rd Tuesday, 5:30-8 p.m.
  - Turning Point Foundation (mentally ill)
    - 536 E. Thompson Blvd, Ventura ..... 805-652-2151

**LEGAL SERVICES**

- California Bar Association - Legal Clinic - (family law/tenant/landlord/bankruptcy) (Monday-Friday) ..... 805-650-7599
- California Rural Legal Assistance
  - 338 S. A St, Oxnard ..... 805-483-8083
  - Grey Law (60 yrs+) ..... 805-658-2266
  - Housing Rights Center ..... 800-477-5977
  - Jewish Family Services - 740 E. Main St, Via ..... 805-641-6565
  - Self-Help Legal Access Center Ventura
    - 800 S. Victoria Ave, Rm #106, Ventura ..... 805-289-8724